





CERAMIC PLANTER SET

#5662

Designed with a nod to modern minimalism, this planter set provides any room or workspace with an additional touch of style

Each planter set includes a ceramic planter, a bamboo leg set, seed packet, and peat pellet packaging in an informative brown kraft box

The two-piece wooden bamboo stand firmly fits together, allowing the ceramic planter to rest snug and secure on top

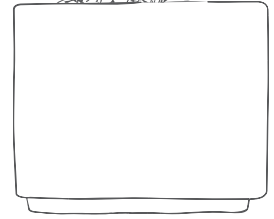
This set showcases a neutral and versatile design that complements nearly all decor aesthetics

48	96	144	288	576
7.19	6.92	6.79	6.66	6.54

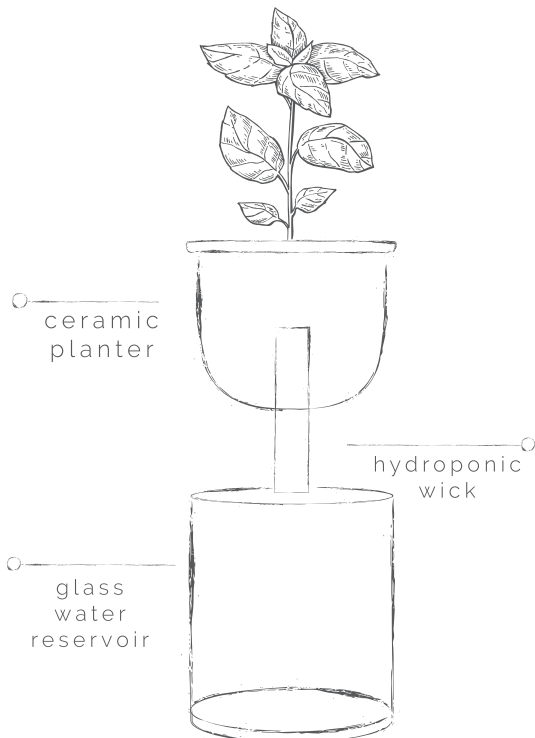
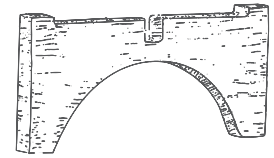
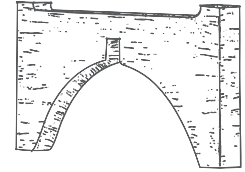
5C



ceramic planter



bamboo legs



ceramic planter

hydroponic wick

glass water reservoir

SELF WATERING PLANTER

#5664

This simple passive hydroponic system provides the perfect amount of water to your plant, thus ensuring you never over-water or under-water

Each planter set includes a ceramic planter, a glass water reservoir, 2 hydroponic wicks, a seed packet, peat pellet, and instructions all packaged in an informative brown kraft box

To keep the plant adequately hydrated, simply pour water into the glass reservoir whenever the water levels become low

Makes a perfect addition to the desk or shelves of both green and brown thumbs alike!

48	96	144	288	576
7.71	7.38	7.22	7.08	6.94

5C



MINI WATERING CAN BLOSSOM KIT

#5658

These whimsical planter kits deliver a fresh springtime feel to any indoor setting

Constructed using galvanized metal, they are a perfect miniaturized replica of a classic watering can

Each kit comes with a mini watering can planter, seed packet, peat pellet, as well as full-color customizable packaging wrap that includes planting instructions

100	250	500	1000	2500
3.87	3.73	3.66	3.60	3.47

5C





MINI PAIL BLOSSOM KIT #557

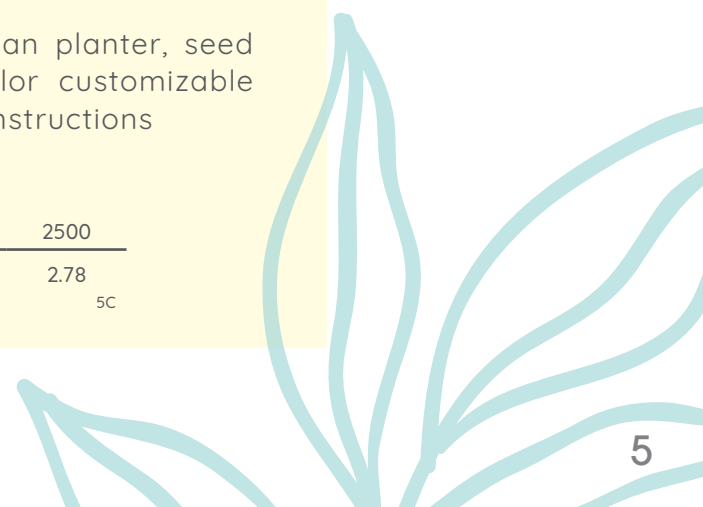
Deliver a fresh impression with a charmingly festive mini pail blossom kits

Made from galvanized metal, they are rust-resistant and designed to retain their color and finish

Each kit comes with a mini watering can planter, seed packet, peat pellet, as well as full-color customizable packaging wrap that includes planting instructions

100	250	500	1000	2500
3.22	3.08	2.99	2.90	2.78

5C





WOODEN CUBE BLOSSOM KIT

#5650

Constructed from natural pine wood with a plastic liner designed to protect the wood from water damage

Includes wooden cube planter, seed packet, peat pellet, and 4CP packaging wrap with printed planting instructions

Pricing includes a one color/location imprint with full color logo on top of 4CP packaging wrap

Colorfy Full Color Decorating option available

100	250	500	1000	2500
4.11	3.87	3.72	3.59	3.40

5C





WOODEN WHEEL BARROW BLOSSOM KIT

#5652

Constructed from natural pine wood with a plastic liner designed to protect the wood from water damage

Includes wooden wheel barrow planter, seed packet, peat pellet, and natural kraft box with printed planting instructions

100	250	500	1000	2500
5.07	4.75	4.56	4.39	4.15

5C





PUT YOUR VERTICAL SPACES TO WORK!

These versatile Wall Sprout Blossom Kits can be affixed to windows and other smooth surfaces, as well as various magnetic surfaces, such as refrigerators and file cabinets





WALL SPROUTS PLANTER BLOSSOM KIT #5654

This unique and fresh take on the conventional planter is guaranteed to stand out and leave a memorable impression

Packaged as a complete kit, it contains everything you need to get growing right out of the box

Each kit includes an indoor gardening planter with attached magnets, 2 optional suction cups, a seed packet, peat pellet, and kraft presentation box with planting instructions

100	250	500	1000	2500
4.49	4.13	3.98	3.83	3.64

5C

WALL SPROUTS INDOOR GARDENING KIT #5656

The removable partitions allow for customizable planting chamber configurations. One, two, or three sections can be created depending on desired layout.

The handy mini pruning shears are housed in their own integrated pocket. This enables flowers to be pruned and herbs to be snipped right on the spot!

Each kit includes an indoor gardening planter with attached magnets, 2 optional suction cups, mini pruning shears, 3 adjustable chamber partitions, 3 seed packet, 3 peat pellets, and kraft presentation box with planting instructions

100	250	500	1000	2500
6.70	6.28	6.03	5.80	5.48

5C



NEW!



mint

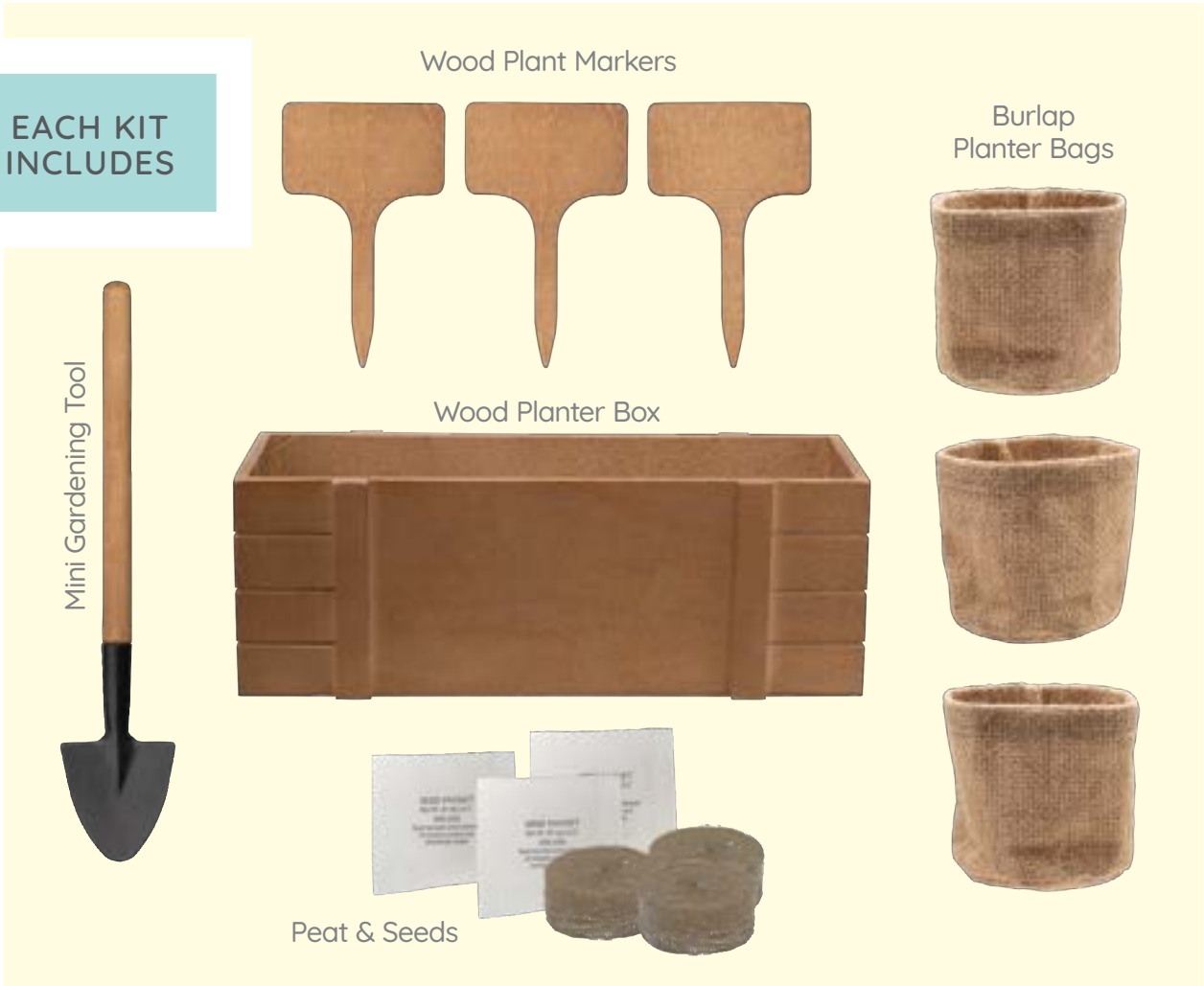
cilantro

lemon
balm

THE
COQUET AND CO.
Local Organics



EACH KIT INCLUDES



TERZETTO BLOSSOM KIT

#5653

A perfect botanic accent for the home or workspace, the Terzetto Blossom Kit adds an undeniable verdant sensibility to just about any indoor space

This scaled-down version of the quintessential window box planter comes with everything required to begin growing your very own indoor garden

Each kit includes a wood planter box, 3 wood plant markers, mini gardening tool, 3 burlap planter bags, 3 seed packets, 3 peat pellets, and a kraft box with planting instructions

24	48	144	288	576
14.30	14.05	13.56	13.33	13.11

5c

TRY A THEMED KIT!

Salsa

- Cilantro, Tomato, Jalapeno

Herb

- Basil, Thyme, Oregano

Relaxation

- Echinacea, Lemon Balm, Lavender

Flower

- Marigold, Poppy, Zinnia

Cocktail

- Mint, Lavender, Basil

Pizza

- Oregano, Tomato, Thyme

Tea

- Mint, Chamomile, Lemon Balm

NEW!



NOTORIOUS NINETEEN

PEOPLE PLANTER KIT

#5661

Add a touch of modern whimsy to your home or office with these unique and memorable People Planter Kits

Made from glazed finished ceramic and holding a white wood sign, this little character is sure to stand out and leave a lasting impression

Each kit comes packaged in a natural kraft box which includes a people planter, imprinted wood sign, seed packet, peat pellet, and instructions - everything you need to start growing instantly

48	96	144	288	576
6.16	6.04	5.81	5.70	5.60

5C



NEW!



MINI CAMPFIRE MUG BLOSSOM KIT

#5657

Bring a hint of the woody outdoors to your home or workspace with these mini campfire mug planters

Each kit comes packaged in a cheerful kraft gift box which contains a mini campfire mug planter, seed packet, peat pellet, and planting instructions

Constructed from durable carbon steel with a powder coated speckle finish

84	252	504	1008	2520
5.90	5.70	5.60	5.50	5.32

5C





MINI BAMBOO BLOSSOM KIT

#5659

Go green with this these environmentally friendly mini bamboo blossom kits constructed from sustainable biodegradable bamboo material

Each kit comes with a mini bamboo planter, seed packet, peat pellet, as well as full-color customizable packaging wrap that includes instructions and information on the biodegradation process

100	250	500	1000	2500
2.62	2.50	2.45	2.40	2.31

5C



BAMBOO BLOSSOM KIT

#5660

Show off your green thumb while practicing some environmental sustainability with this classic bamboo blossom kit made from biodegradable bamboo materials

Each kit includes a bamboo planter, seed packet, peat pellet, as well as full-color customizable packaging wrap which includes instructions and details of the biodegradation process

100	250	500	1000	2500
3.86	3.62	3.48	3.40	3.28

5C



Easy as 1, 2, 3 !

1. Select from 9 paper shapes
2. Choose from 17 available seed paper colors
3. Submit custom artwork or request a stock design

SEED SHAPE BOOKMARK

#5600-#5616

This 100% recycled biodegradable seed paper is made with 30% post-consumer materials embedded with a blend of annual and perennial wildflower seeds

This blend includes: Bird's Eyes, Clarkia, Catchfly, Black Eyed Susan, Spurred Snap Dragon, English Daisy and Sweet Alyssum

To use, remove seed paper shape from bookmark. Plant the seed paper into a traditional pot with soil. Add water and plant nutrients as needed. Seeds will grow while paper will compost.

250	500	1000	2500	5000
1.42	1.37	1.32	1.25	1.21

5C



PEN & MINI POT #533

Available with your choice one of 4 pen styles: Buttercup, Daisy, Palm Tree, or Sunflower

Each “pot” is made with 100% recycled materials and is available in your choice of green, orange or white

125	250	500	1000	2500
2.60	2.45	2.36	2.27	2.15

5C

PLANT RAKE & SPADE #73

Perfect for planting seeds, tending to small plants, arranging small planters, or aerating soil

Store upright in soil when not in use to add some unique flair to your planters

250	500	1000	2500	5000
1.14	1.10	1.06	.98	.95

5C

AVAILABLE SEED OPTIONS



Basil

Italian Large Leaf



Cilantro

n/a



Chamomile

Common



Clover

Dutch White Clover



Coleus

Rainbow Mix



Echinacea

Purple Coneflower



Fir Tree

Douglas



Forget-Me-Not

Cynoglossum



Jalapeño

n/a



Lavender

True English



Lemon Balm

Mint



Marigold

French Sparky Mix



Mint

Peppermint



Mixed Herbs

Basil, Dill, Cilantro, Parsley



Money Plant

n/a



Oregano

Italian



Patriotic Mix

Bachelor Button



Poppy

Shirley



Spruce Tree

Colorado Blue



Sunflower

Autumn Beauty



Thyme

Winter



Tomato

Red Cherry Large



Wildflower Mix

*Variety**



Zinnia

California Giant



We pledge that we do not knowingly buy or sell genetically engineered seeds or plants. The mechanical transfer of genetic material outside of natural reproductive methods and between genera, families or kingdoms poses great biological risks, as well as economic, political and cultural threats.

GENERAL INFORMATION

Additional Item Details: For additional item details, such as item size, imprint area, etc., please refer to www.illiniline.com or click [here](#) to download a PDF containing further item information.

Colorfy: Item 5650 and 5661 are available for Colorfy decoration. Additional run charge of .45(G) US/CAD per piece and \$40(G) US/CAD set-up apply.

Silkscreen: Item 5662 is available for Silkscreen decoration. A silkscreen set-up charge of \$45(G) US/CAD applies.

Set-Up Charges: Unless specified otherwise, the set-up charge for straight line copy or a logo is \$40(G) US/CAD per color/location.

Additional Run Charges: Additional run charges are \$.25(G) CAD/US per color/location.

4CP Packaging Wraps: Item 5658, 557, 5650, 5659, and 5660 includes a 4CP packaging wrap. The base pricing consists of a one color/location imprint and a full-color logo on top of the wrap. Full customization of the wrap artwork is available for an additional set-up charge of \$40(G). Templates are available upon request.

Pricing Policy: All pricing is subject to change without notice. Please refer to www.illiniline.com for the most current pricing. Pricing featured by another agency is not valid. Pricing featured in catalog and throughout General Information is listed in US Dollars/FOB Factory. Canadian Dollar pricing is noted where applicable and refers to Canadian Services Pricing (CAD). Contact the factory for further details or visit www.illiniline.com.

Canadian Services Pricing (CAD): Pricing is in Canadian dollars and includes ground transportation for one complete shipment to one postal code serviced by UPS Ground. Duty and brokerage fees are also included in the price. For expedited freight or required air shipment, contact the factory for details. For business to business, import/export transactions, a 5% GST fee is added to the invoice as a line item and is processed via the UPS NRI system. All pricing is subject to change without notice.

Blank Merchandise: US Dollar/FOB Factory blank items are sold at ½ minimum order quantity at end quantity price; certain exclusions apply. CAD Services blank items are sold at column pricing less 10%.

Less Than Minimum: US Dollar/FOB Factory add \$25.00(G) with an absolute minimum of ½ of the first column quantity. For less than minimum blank orders, see Blank Merchandise policy and contact factory for appropriate LTM fees. Less than minimum orders are not available using the CAD Services program. Contact the factory for further details.

Production Time: Standard production time for most pad printed products is 3 working days on catalog printed quantities for one color/location pad print. For quantities larger than end column, contact the factory for production time. Production time will vary for Silkscreen and Colorfy decoration. Contact the factory for details.

Sample Policy: Send sample orders via mail, fax, or email to sample@illiniline.com. All randomly imprinted samples under US/CAD \$10 EQP value with an accompanying third-party shipping number are sent free of charge. All blank sample requests will be treated as blank orders. Please refer to the blank order policy for more information. All other orders will be billed at the EQP value plus shipping. Samples will be shipped within 48 hours.

