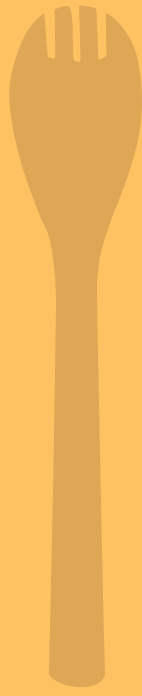


 illini
We Make It Happen!

fall
★ INTO ★
winter
2023



HALLOWEEN



COOKING & ENTERTAINING

DRINKWARE ACCESSORIES



HOLIDAY PLANTERS

Food & Drink Items	4-7
Strobes	8
Wristbands	9
Reflective Items	10-12
Photo Accessories	12-13

Kitchen Utensils	14-15
Bamboo Utensils	16
Bamboo Coffee Scoop	17
Cookie Cutters	17
Cheese Boards	18-19

Corkscrews & Stoppers	20-22
Govino Wine Glasses	23
Whiskey Stones	24
Cocktail Accessories	25-26
Campfire Drinkware	27
Coasters	28-31

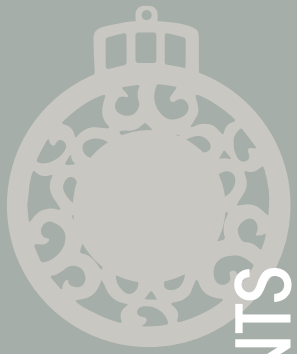
Mini Campfire Mug	32
Ceramic Planter	33
Wooden Cube	34
Ornament Planter	35

Embrace the spirit of the season with our 'Fall into Winter' product selection!

As the season of appreciation and celebration approaches, we're thrilled to present a curated collection of festive and seasonal promotional items that will elevate your brand's presence from fall into winter

Make this season one to remember with our diverse selection of promotions that will leave a lasting impression

Let the festivities begin!



FESTIVE ORNAMENTS

STOCKINGS & HATS



CLASSIC WOODEN TOYS

PHOTO FRAMES & ACCESSORIES



Shatter Resistant	36
Mini Campfire Mug	37
Flat Shatter Resistant	38-39
Light Up	40-41
Glitter, Glass, & Ceramic	42-46
Slate, Metal, & Wood	47-50
Photo	51

Plush Stockings	52
Plush Santa Hats	52
Plush Antlers	52
Felt Hats & Stockings	53

Block Set	54
Jigsaw Puzzle	54
Trucks	55
Train	55
Airplane	55

Wooden Frames	56
Wood Candle Holder	57
Snow Frames & Globes	58-59
Photo Frames	60-62
Photo Mounts	63
Filmstrip Easel Frame	63



Spot the 'Fresh Ideas' icon throughout our brochure, representing a selection of all-new, high-impact promotional products. From trendy novelties to innovative branding solutions, these items are thoughtfully curated to cater to your every branding need, ensuring your promotions leave a lasting impression.



Colorfy is a full color digital printing process that enables item decorating using artwork containing bold and vibrant colors. The Colorfy run charge can be found by the Colorfy logo throughout the catalog. Colorfy production times may vary during the busy season. Contact factory for rush jobs and above catalog quantities.



All American made items feature the USA icon. These products are decorated by US union workers. Union bug imprints are available free of charge. Just add this request to each purchase order.



The FDA Checkmark icon identifies products that are compliant with FDA requirements. Requirements and qualifications for FDA compliance vary by item and material. Please contact the compliance department for further details and information.



Silkscreen decorating allows for larger decorating areas on conical items. The additional Silkscreen run charge for each item can be found by the Silkscreen logo throughout the catalog. As production time may vary, allow at least 5-7 days for all Silkscreen orders. Please contact factory for rush jobs and above catalog quantity orders.



Laser engraved decorating adds a overall refined look. The additional Engraved run charge for each item can be found by the Engraved logo throughout the catalog. As production time may vary, allow at least 7 - 10 days for all Engraved orders. Please contact factory for rush jobs and above catalog quantity orders.



We have partnered with One Tree Planted to plant trees! For every order of a planter kit featuring this icon, a tree will be donated. One Tree Planted is a 501(c)(3) nonprofit dedicated to global reforestation. They plant trees to restore nature and biodiversity and offer businesses like ours a simple sustainability solution.



Each cookie cutter includes a full color branded recipe card that contains a sugar cookie recipe on the back

A perfect promotion for Halloween trick or treaters

Card Front
Custom Artwork



Card Back
Sugar Cookie Recipe

Cookie Cutters
#3818 - #3838

Includes: Branded Recipe Card
Recipe Card Size: 3 1/2" x 3 1/2"
Maximum Imprint Colors: 1
Packaging: Polybagged



#3818 Pumpkin

Color: Orange
Imprint Area: 3 1/8" x 1/2"
Item Size: 3 7/8" x 3 1/2" x 1/2"

#3822 House

Color: White
Imprint Area: 2 1/4" x 3/8"
Item Size: 3 1/2" x 3 3/8" x 1/2"

#3832 Person

Color: White
Imprint Area: 2 1/4" x 1/2"
Item Size: 3" x 4 1/8" x 7/16"

#3838 Dog Bone

Color: White
Imprint Area: 3 1/2" x 1/2"
Item Size: 4 1/4" x 2 3/4" x 1/2"



Each natural slate coaster includes feet to protect furniture

Packaged in an onyx presentation box and available as singles or sets of four

Slate Coasters

Colors: Natural Black Slate
 Maximum Imprint Colors: 1
 Packaging: Onyx Presentation Box

Square Slate Coaster

#1651
 Imprint Area: 2 7/8" x 2 1/2"
 Item Size: 4" x 4" x 3/16"



Round Slate Coaster

#1661
 Imprint Area: 2 1/2" x 2 1/2"
 Item Size: 4" Dia. x 3/16"



#1651
Box



#1661
Box



Color Wrapped Classic Paddle Bottle Opener

#849

Colors: Silver w/Red, Blue, Orange, Green, Purple, or Black Vinyl Grip

Imprint Area: 3 1/4" x 1 1/8"

Maximum Imprint Colors: 2

Item Size: 7" x 1 5/8" x 1/8"

Packaging: Polybagged



Stainless steel wrapped in a vinyl coating for additional comfort

Sleek and sturdy design opens bottles with speed and ease



Round Bottle Opener Coaster

#1656

Colors: White

Item Size: 4 1/4" Dia. x 3/16"

Imprint Area: 2 1/4" x 2 1/4"

Maximum Imprint Colors: 2

Packaging: Bulk



This handy coaster also doubles as a bottle opener

Square version available

**Govino® 12oz
Wine/Cocktail Glass**

Material: Food-Safe BPA-Free Polymer
Colors: Clear
Imprint Area: 1 1/2" x 1 1/2"
Maximum Imprint Colors: 2
Item Size: 3" x 3 11/16" x 3"
Packaging: Polybagged



**Classic Version
#555**

**Dishwasher Safe
#555DS**

**Dishwasher Safe 2 Pack
#500DS**

**Dishwasher Safe 4 Pack
#556DS**



govino™
GO ANYWHERE WINE/COCKTAIL GLASS

The award-winning Govino wine/cocktail "glass" is actually not glass at all. It is made from a BPA-free polymer, which reflects a wine's color and projects its aromatics much like crystal.

Dishwasher safe version available as singles, 2 packs, and 4 packs as well



**Pumpkin
Carving Scoop
#3910**

Colors: Orange
Imprint Area: 2 1/2" x 1/2"
Maximum Imprint Colors: 2
Item Size: 10" x 2 1/2" x 1"
Packaging: Polybagged



Double edged serrated scoop allows for a speedy and mess free pumpkin carving experience

Reinforced curved handle provides a firm and sturdy grip while removing heavy pulp and seeds



Circle Strobe

#3500

Colors: Clear, Trans. Purple, Trans. Red, Trans. Orange, Trans. Green, Trans. Blue, or Trans. Yellow w/Red LED

Imprint Area: 1 5/8" Dia.

Maximum Imprint Colors: 2

Item Size: 1 7/8" x 1 7/8" x 5/8"

Packaging: Polybagged

Features a loop which allows for optional necklace or safety pin attachment

Pumpkin Strobe

#3522

Colors: Orange w/Red LED

Imprint Area: 1 1/4" x 1 1/4"

Maximum Imprint Colors: 2

Item Size: 2 1/8" x 2" x 5/8"

Packaging: Polybagged



#8208

#8219

#8222

**Glow In Dark
Yellow Glow**

**Glow In Dark
Blue Glow**

Each piece is constructed from comfortable and durable silicone material

Various color options available to choose from

**Quick Turn
Pad Printed Wristbands**

#8208

Colors: Black, Green, Maroon, Navy Blue, Orange, Pink, Purple, Red, Royal Blue, White, Yellow, Blue Glow, or Yellow Glow
Imprint Area: 2 1/2" x 5/16"
 PMS Color Match is Not Available
Maximum Imprint Colors: 1
Item Size: 7 3/8" x 7/16"
Packaging: Bulk

Silicone Link Wristband

#8219

Colors: Black, Blue, Green, Navy Blue, Lime Green, Orange, Pink, Purple, Red, White, or Yellow
Imprint Area: 1 1/4" x 1/2"
 No PMS Match Available
Maximum Imprint Colors: 1
Item Size: 3" Dia. x 1/4"
Packaging: Bulk

**Silicone Wristband
w/Metal Accent**

#8222

Colors: Black, Green, Maroon, Navy Blue, Orange, Pink, Purple, Red, Royal Blue, White, Yellow, Blue Glow, or Yellow Glow
Imprint Area: 1 1/8" x 3/8"
Maximum Imprint Colors: 2
Item Size:
 Wristband: 7 3/8" x 7/16"
 Metal: 1 1/2" x 1/2"
Packaging: Bulk

Additional Colors Available:



Additional Colors Available:



Additional Colors Available:





Great for outdoor and nighttime events

A fun alternative to typical wristbands

Each bracelet is lightweight and versatile, adjusting to your wrist, leg, bicycle, bag, and more!

Reflective Safety Slap Bracelet

#1892

Colors: Neon Yellow, Orange, Pink or Blue

Imprint Area: 5" x 1/2"

Maximum Imprint Colors: 1

Item Size: 11 7/8" x 1 1/8"

Packaging: Bulk

Fabric Reflective Safety Bracelet

#1905

Colors: Black, Pink, Blue, or Yellow w/Silver Reflective Stripe

Imprint Area: 6" x 5/8"

Maximum Imprint Colors: 1

Item Size: 11 7/8" x 1 3/16" x 1/8"

Packaging: Bulk



Reflective Drawstring Tote

#1268

Colors: Black, Neon Yellow, or Neon

Orange w/Reflective Silver Strip

Imprint Area: Reflective Strip Only

6" x 1 1/4"

Maximum Imprint Colors: 1

Item Size: 14" x 17" x 1/8"

Packaging: Bulk



Includes reinforced corner grommets and a 2" wide reflective strip

The reflective strip enhances visibility to help ensure your safety while jogging, hiking, biking, or walking your dog at night

CPSIA compliant and recommended for ages 3+



Diamond Reflective Zipper Pulls

#1896

Imprint Area: 1 1/4" x 1"

Item Size: 1 3/4" x 1 3/4" x 1/16"



Round Reflective Zipper Pulls

#1895

Imprint Area: 1 1/2" Dia.

Item Size: 2" Dia. x 1/16"



Reflective Zipper Pulls

Colors: Neon Yellow, Orange, Pink or Blue

Maximum Imprint Colors: 2

Item Size: 1 3/4" x 1 3/4" x 1/16"

Packaging: Polybagged

Perfect for bags & backpacks

Warning:
Small Parts



Made from lightweight and durable 300D oxford fabric and features a side release buckle closure and a metal D-ring attachment for leashes

The adjustable collar strap has a 12 1/2" to 20" range allowing for the best fit for your pet

The bright color and reflective strip keep your pet safe and visible

Reflective Pet Bandana

#1870

Colors: Yellow w/Reflective Strip

Imprint Area: Specify on Order

1: 5" x 1 1/2"

2: 2" Dia.

Maximum Imprint Colors: 1

Item Size:

Bandana: 8 1/2" x 5 9/16"

Strap: 12 1/2" - 20" x 1 1/8"

Packaging: Polybagged

Dog Bone Photo Holder

#7730

Colors: Natural or White

Imprint Area: 3 1/2" x 1"

Maximum Imprint Colors: 2

Item Size:

Photo Holder: 4 3/4" x 1 7/8" x 11/16"

Box: 4 7/8" x 2 1/8" x 3/16"

Packaging: Kraft Box



These bone shaped photo holders can also be used to hold memos, business cards, table place cards, appointment cards, and more!

Each piece is made from natural pine wood and packaged in a decorative kraft box

3" x 2" photo insert size

Sturdy bent easel frame design

Constructed of high quality acrylic

Multiple imprint areas allows for additional customization

A fun and unique accent piece for either the home or office

Dog Bone Photo Frame

#7725

Insert Size: 3" x 2"

Colors: White

Imprint Area: Specify on Order

Below Photo: 3 1/2" x 3/8"

Above Photo: 3 1/2" x 1/2"

Right or Left of Photo: 3/4" x 2"

Maximum Imprint Colors: 2

Item Size: 6 1/8" x 4" x 1/16"

Packaging: Polybagged



6 x 4 insert size

Bent acrylic easel back

Perfect for Halloween parties, special events, photographers, pumpkin patches, and more

Pumpkin Photo Frame

#7727

Insert Size: 6" x 4"

Colors: Orange

Imprint Area: Specify on Order

Below Photo: 3" x 1/2"

Above Photo: 3" x 1/2"

Maximum Imprint Colors: 1

Item Size: 8 1/16" x 6 5/8" x 1/16"

Packaging: Polybagged



Cherry Pitter

#3918

Colors: Red or White

Imprint Area: 1/2" x 1"

Maximum Imprint Colors: 2

Item Size: 2 1/4" x 1 7/16" x 3 7/8"

Packaging: Individually Boxed



Removes cherry pits efficiently and effortlessly. Just place the cherry in the gadget and press!

The spring loaded plunger pits both large and small cherries without bruising or wasting fruit

Twist lock plunger ensures safe storage when not in use

Featuring a serrated edge, this sturdy metal turner pairs perfectly with brownies, casseroles, pies, as well as a variety of other cooked and baked goods

Metal Turner w/Serrated Edge

#3900

Colors: White

Imprint Area: 2 1/8" x 1/2"

Maximum Imprint Colors: 2

Item Size: 9 1/4" x 2"

Packaging: Individually Boxed



This combination measuring spoon includes measurements of: 1 tablespoon, 1 teaspoon, 1/2 teaspoon and 1/4 teaspoon

4 Way Measuring Spoon

#812

Measurements: 1 tbsp, 1 tsp, 1/2 tsp, and 1/4 tsp

Colors: White or Yellow

Imprint Area: 1 15/16" x 5/8"

Maximum Imprint Colors: 2

Item Size: 5 3/8" x 1 3/4"

Packaging: Bulk



Front
1 tbsp & 1 tsp



Back
1/4 tsp & 1/2 tsp



This server features a serrated edge for easy cutting

Allows for the perfect slice and serve without damaging your deserts

Metal Cake/Pie Server

#3840

w/Serrated Edge

Colors: White w/Black Trim

Imprint Area: 2 1/8" x 1/2"

Maximum Imprint Colors: 2

Item Size: 10 1/4" x 2 1/4"

Packaging: Individually Boxed





This charming measuring spoon set is perfect for both your cooking and baking needs

Each set includes four standard measurement sizes: 1 tbsp, 1 tsp, 1/2 tsp, and 1/4 tsp

To ensure the longevity of this item, hand wash with mild soapy water and allow to air dry

Wooden Measuring Spoons

#3947

Measurements: 1 tbsp, 1 tsp, 1/2 tsp, and 1/4 tsp

Colors: Bamboo

Imprint Area: 1 1/2" x 1 1/8"

Maximum Imprint Colors: 2

Item Size: 11" x 2 1/8" x 1"

Packaging: Polybagged



Made from durable bamboo wood which resists staining, cracking, and warping better than traditional wood utensils

Combine up to three bamboo utensils in an optional drawstring burlap bag!

Bamboo Utensils

#3941 - #3943

Colors: Bamboo

Imprint Area: 4 1/2" x 1/2"

Maximum Imprint Colors: 2

Item Size: 11 7/8" x 2 5/16" x 3/8"

Packaging: Bulk



3943 Bamboo Rounded Fork

3942 Bamboo Slotted Spatula

3941 Bamboo Spoon



#3941

#3942

#3943

#UTENSIBAG

This 2 tbsp. Bamboo Coffee Scoop measures out the perfect amount of coffee

The long handle reaches to the bottom of the bag or container and works perfectly for stirring and mixing your drink

The scoop is perfect not only for coffee but also hot chocolate mixes, tea, spices, sugar, as well as other dry good



Bamboo Coffee Scoop

#3948

Colors: Bamboo

Imprint Area:

Handle: 4 1/2" x 1/4"

Bottom: 1 1/4" Dia.

Maximum Imprint Colors: 2

Item Size: 7 7/8" x 1 3/4" x 1"

Packaging: Polybagged



Each cookie cutter includes a full color branded recipe card and imprinted metal cookie cutter in a gift box with silver cord

Metal Cookie Cutters

#3806 - #3809

Includes: Branded Recipe Card

Colors: Silver

Item Size:

Recipe Card: 3 3/4" x 3 3/4"

Box: 3 3/4" x 4" x 1 5/8"

Maximum Imprint Colors: 1

Packaging: Acetate Box w/Silver Cord



3806 Metal Heart

Imprint Area: 2 3/8" x 1/4"

Item Size: 3 3/4" x 4" x 1 1/2"

3807 Metal Star

Imprint Area: 2" x 1/4"

Item Size: 4" x 4" x 1 1/2"

3808 Metal Tree

Imprint Area: 1 1/2" x 1/4"

Item Size: 3 1/4" x 4" x 1 1/2"

3809 Metal House

Imprint Area: 1 3/4" x 1/4"

Item Size: 3 3/4" x 4" x 1 1/2"



This multi purpose set is constructed from renewable bamboo wood and features a removable tempered glass cutting surface

Included with this set are three wine accessories: a bottle stopper, a bottle pourer/stopper, and a corkscrew with a standard opener, spiral worm, and serrated foil cutter

Cheese & Wine Set

#904

Includes: Bamboo Tray, Tempered Glass Cutting Board, Wine Stopper, Wine Pourer/Stopper, and Wine Corkscrew

Colors: Bamboo Wood w/Silver Accessories

Imprint Area: Specify On Order

Glass (Colorfy): Approx. 10 1/2" x 3 1/2"

Wood (Pad Print): 3/4" x 2"

Maximum Imprint Colors: 1

Item Size:

Tray: 4 3/4" x 11 11/16" x 1 1/4"

Glass: 3 7/8" x 10 3/4" x 3/16"

Stopper: 3/4" x 3 5/8" x 13/16"

Pourer/Stopper: 13/16" x 3" x 3/4"

Corkscrew: 13/16" x 4 5/16" x 7/16"

Packaging: Individually Boxed



Hand wash only



3 Wine Accessories Included

The stainless steel wire blades cut through various cheeses

The doubled sided design allows for thin or thick slices

Cheese Knife

#911

Colors: White

Imprint Area: 1 3/4" x 1/2"

Maximum Imprint Colors: 2

Item Size: 8 5/8" x 1"

Packaging: Polybagged



Bamboo wood and a tempered glass cutting disc with a fork-tipped spear cheese knife

Three Piece Cheese Board Set

#900

Colors: Wood w/Glass

Imprint Area:

Glass (Colorfy): 5 1/2" Dia.

Wood (Pad Print): 4 1/4" x 2 1/2"

Maximum Imprint Colors: 2

Item Size:

Board: 10 1/4" x 8 1/4" x 9/16"

Glass: 6" Dia. x 5/32"

Knife: 6" x 1" x 1/2"

Packaging: Individually Boxed



Hand wash only



This complete set includes a tempered glass cutting board with non-slip feet and 4 stainless steel cheese knives with wood handles

Pricing includes Colorfy full color decorating on the glass cutting board

Cheese Board & Knife Set

#906

Includes: Glass Cutting Board w/Non-Slip Feet, Soft Cheese Knife, Parmesan Shaver, Cheese Fork, and Hard Cheese Knife

Colors: Wood w/Glass

Imprint Area: 7 5/8" x 5 5/8"

Maximum Imprint Colors: Full Color

Item Size:

Glass Board: 7 7/8" x 5 7/8" x 1/8"

Box: 8" x 6 1/4" x 1"

Packaging: Acetate Box w/Kraft Paper Wrap





6399
Circle

6399
Shield

6394

Metal Wine Stopper

#6394

Colors: Silver

Imprint Area: 3/4" x 3/4"

Maximum Imprint Colors: 2

Item Size: 1" x 1" x 3 3/4"

Packaging: Individually Boxed



Wine Stopper

#6399

Colors: Silver w/Frosted White Topper

Imprint Area: Specify on Order

Circle: 5/8" x 5/8"

Shield: 3/4" x 3/4"

Maximum Imprint Colors: 2

Item Size: 1 1/4" x 3 3/4"

Packaging: Individually Boxed



A perfect gift for wine enthusiasts, these wood wine stoppers are charmingly crafted from Birch Wood (top) and EVA (stopper) for optimal preservation, and elegantly packed on individual retail hanging cards, ideal for gifting or retail display

Achieve a more natural look with a tone on tone imprint (PMS 4625), enhancing the overall appeal of this wine accessory



Wood Wine Stopper

#6393

Colors: Natural Birch Wood

Imprint Area: 3/4" Dia.

Maximum Imprint Colors: 2

Item Size: 1 3/8" Dia. x 1 3/8"

Packaging: Polybagged



Features a two-step spring-loaded lever, spiral/worm, bottle opener and serrated foil cutter

The 2 step cork extraction provides extra leverage and easier cork removal and won't bend or destroy even the most stubborn of corks

Double Hinged Wine Key Corkscrew
#863

Colors: Black or Faux Wood
Imprint Area: 1 1/2" x 1/4"
Maximum Imprint Colors: 2
Item Size: 4 15/16" x 1 5/16" x 9/16"
Packaging: Individually Boxed



 Made in Spain

Pulltap's[®]

Pulltap's Double Hinged Waiters Corkscrew
#837

Includes: Bottle Opener and Retracting Blade
Colors: Black or Burgundy
Imprint Area: 2" x 1/4"
Maximum Imprint Colors: 2
Item Size: 4 3/4" x 7/8" x 1/2"
Packaging: Acetate Sleeve



The Pulltap's Double Hinged Waiters Corkscrew is known for its incredible ease, sommelier style, and the professional way it pulls estate-length corks without breaking them

Retractable Teflon-coated spiral glides effortlessly through all types of natural or synthetic corks

Features a metal body, a nickel-plated articulated double lever, bottle opener, and a sliding foil cutting blade with an automatic return mechanism





Crafted with high-quality bamboo this Bamboo Wine Tool Set is the perfect companion for wine enthusiasts and connoisseurs

This set includes a waiter's corkscrew with a bamboo handle, and a wine stopper featuring a bamboo topper, allowing you to preserve the freshness of unfinished wine

Both tools come are housed in a sturdy bamboo box with a magnetic closure, ensuring secure storage and convenient access



Bamboo Wine Tool Set

#839

Colors: Bamboo

Imprint Area: 3" x 2"

Maximum Imprint Colors: 2

Item Size: 5 1/16" x 3 11/16" x 1 5/16"

Packaging: Individually Boxed



This classic wine gift set includes a silver corkscrew and stopper neatly stored in a beautifully crafted rosewood finished box

Wine Gift Set

#854

Colors: Silver Corkscrew and Stopper w/Rosewood Finished Box

Imprint Area: 2 3/4" x 2 1/2"

Maximum Imprint Colors: 2

Item Size: 3 7/8" x 5 1/2" x 1 7/16"

Packaging: Individually Boxed

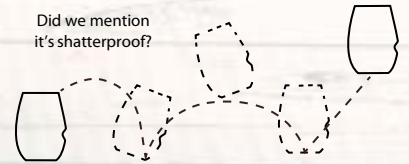




govino[™]
GO ANYWHERE WINE GLASS

reusable shatterproof recyclable

Did we mention
it's shatterproof?



The award-winning Govino wine "glass" is actually not glass at all. It is made from a BPA-free polymer, which reflects a wine's color and projects its aromatics much like crystal.

Available as singles, 2 packs*, and 4 packs *Dishwasher Safe Version Only



Ergonomic
Thumb
Notch



Govino® 16oz Wine Glass

Material: Food-Safe BPA-Free Polymer

Colors: Clear

Imprint Area: 1 5/8" x 2"

Maximum Imprint Colors: 2

Glass Size: 3 1/4" x 4 3/8" x 3"

Packaging: Polybagged



Classic Version

#542

Dishwasher Safe

#542DS

Dishwasher Safe 2 Pack

#534DS

Dishwasher Safe 4 Pack

#544DS



Whiskey Stone Set

#893

Includes: Pine Box, 6 Whiskey Stones, Instructions, and a Velvet Drawstring Pouch

Colors: Natural Pine w/Gray Stones

Imprint Area: 2 1/4" x 2 1/4"

Maximum Imprint Colors: 2

Item Size:

Box: 3" x 3" x 1 7/16"

Stone: 3/4" x 3/4" x 3/4"

Packaging: Individually Boxed



Each set includes 6 natural basalt stones and a velvet drawstring pouch housed in a natural pine gift box

Whiskey stones chill your dram while maintaining both the purity and flavor profile of the liquor

To use, place 2 - 3 chilled stones in your favorite drink and enjoy

After use, rinse and air dry before placing back in the freezer

Before using, chill the cubes for approximately 3-4 hours in the freezer for maximum effectiveness

Stainless Chilling Cubes

#897

Includes: 4 Stainless Steel Cubes, Instructions, and a Velvet Drawstring Pouch

Colors: Silver Cubes w/Black Velvet Drawstring

Imprint Area: 2 1/2" x 2 1/2"

Maximum Imprint Colors: 1

Item Size:

Box: 4 7/8" x 4 3/4" x 1 1/2"

Cube: 1 1/16" x 1 1/16" x 1 1/16"

Packaging: Individually Boxed



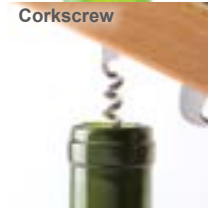


With 10 cocktail mixing tools to choose from, this convenient design turns anyone into a master mixologist

- MUDDLER** Crush fruit, herbs, spices, etc.
- REAMER** Squeeze juice from your favorite fruits
- CHANNEL KNIFE** Create twists and other garnishes
- JIGGERS** Get a perfect 1 oz or 1/2 oz pour every time
- ZESTER** Capture the tang and aroma of citrus fruits
- KNIFE** Slice and dice ingredients and garnishes
- STIRRER** Blend cocktails thoroughly
- STRAINER** Separate ice from liquid as you pour
- CORKSCREW** Uncork your favorite bottle of wine
- BOTTLE OPENER** Pop the top off a beer or mixer

Cocktail Multi Tool #710

Colors: Beechwood Handle w/Stainless Steel Cocktail Accessories
Imprint Area: 2 1/2" x 1/2"
Maximum Imprint Colors: 2
Item Size:
 Tool: 8 3/4" x 1 5/8" x 2"
 Box: 9 3/4" x 2 15/16" x 2 5/8"
Packaging: Black Window Box





A perfect addition to whiskey, bourbon, and other liquors

Flavor infuse water, juice, or tea by adding fruits and herbs to mold

Made of FDA compliant silicone

Ice Sphere Mold

#895

Includes: Branded Instruction Card

Colors: White, Black, Green, or Blue

Imprint Area: 1/2" x 1/2"

Maximum Imprint Colors: 1

Item Size:

Mold: 2 1/8" Dia. x 1 7/8"

Box: 2 3/16" x 2" x 2 3/16"

Instruction Card: 2" x 2"

Packaging: Acetate Box



Full Color Branding on Front

Instructions on Back



Includes citrus reamer, strainer, 1/2 oz container, pouring spout, and storage lid

Easy and compact all in one tool

The strainer catches pulp and seeds

Juice can be stored in the same container

Pours the perfect amount of fresh juice every time

Disassembles for hand washing

FDA compliant



Citrus Juicer

#3925

Colors: Yellow, Green, or White

Imprint Area: 1/2" x 1"

Maximum Imprint Colors: 1

Item Size: 2 13/16" x 3 1/8" x 4"

Packaging: Individually Boxed





16 oz Campfire Mug

#714

Material: Carbon Steel

Colors: White, Green, Red, Blue, or Black

Imprint Area: 1 3/4" x 1 3/4"

Maximum Imprint Colors: 2

Item Size: 5 5/16" x 3 5/8" x 3 5/8" Dia.

Packaging: Polybagged



This lightweight 16 oz mug is perfect for camping, tailgating, picnics, as well as everyday use

Ideal for warm drinks, soups, and more

These classic mugs are FDA compliant



Mini Campfire Mug Shot Glass

#6312

Colors: White, Green, Red, Blue, or Black

Imprint Area: 1" x 3/4"

Maximum Imprint Colors: 2

Item Size:

Mug: 2 13/16" x 1 7/8" x 2 3/16" Dia.

Box: 2 15/16" x 2 7/16" x 2 3/16"

Packaging: Kraft Packaging





Square Absorbent Stone Coasters

Colors: Natural Cream
Imprint Area: 3 3/4" x 2 1/2"
Maximum Imprint Colors: 4
Coaster Size: 4 1/4" x 4 1/4" x 5/16"
Packaging: Natural Kraft Packaging

Square Absorbent Stone Coaster

#1634
Includes: 1 Coaster w/Cork Backing



Square Absorbent Stone Coaster Duo

#1637
Includes: 2 Coasters w/Cork Backing



Square Absorbent Stone Coaster 4 Pack

#1645
Includes: 4 Coasters w/Cork Backing



Round Absorbent Stone Coasters

Colors: Natural Cream
Imprint Area: 2 1/2" x 3"
Maximum Imprint Colors: 1
Coaster Size: 4 3/8" Dia. x 5/16"
Packaging: Natural Kraft Packaging

Round Absorbent Stone Coaster

#1633
Includes: 1 Coaster w/Cork Backing



Round Absorbent Stone Coaster Duo

#1636
Includes: 2 Coasters w/Cork Backing



Round Absorbent Stone Coaster 4 Pack

#1644
Includes: 4 Coasters w/Cork Backing



Absorbent Stone Coaster Sets

Includes: 4 Coasters w/Cork Backing and Natural Wood Holder
Colors: Natural Cream
Packaging: Natural Wood Holder

Square Absorbent Stone Coaster Set

#1639
Imprint Area: 3 3/4" x 2 1/2"
Maximum Imprint Colors: 4
Coaster Size: 4 1/4" x 4 1/4" x 5/16"
Wood Holder Size: 4 7/8" x 4 7/8" x 1 5/8"



Round Absorbent Stone Coaster Set

#1638
Imprint Area: 2 1/2" x 3"
Maximum Imprint Colors: 1
Coaster Size: 4 3/8" Dia. x 5/16"
Wood Holder Size: 4 3/16" x 4 15/16" x 1





Each bamboo coaster is crafted from renewable bamboo wood and thoughtfully designed with four EVA foam feet, ensuring your tables and surfaces stay protected and scratch-free

The crisp and clean look of these natural bamboo coasters complements virtually every decor, adding a touch of elegance to any home or office setting

Available in convenient options of single coasters or sets of four with an accompanying bamboo wood stand

Bamboo Coaster Set

#1694

Includes: 4 Coasters w/Bamboo Holder

Colors: Natural Bamboo Wood

Imprint Area: 2 1/2" x 2 1/2"

Maximum Imprint Colors: 2

Item Size:

Coaster: 3 1/2" x 3 1/2" 1/4"

Bamboo Holder: 4" x 4" x 1 9/16"

Packaging: Natural Kraft Packaging



Bamboo Coaster

#1691

Includes: 1 Coaster

Colors: Natural Bamboo Wood

Imprint Area: 2 1/2" x 2 1/2"

Maximum Imprint Colors: 2

Item Size: 3 1/2" x 3 1/2" 1/4"

Packaging: Natural Kraft Packaging





These Acacia Wood & Resin Coasters are crafted with durable acacia hardwood boasting natural water-resistant and antimicrobial properties, ensuring your drink coasters stand the test of time

The frosted resin tops add a modern touch, transforming each pieces into stylish conversation pieces that enhance any setting

Each coaster boasts a one-of-a-kind structure, reflecting slight color and grain variations, and is available as single coasters or in sets of four which are elegantly packaged in a gold metal holder

Acacia Wood & Resin Coaster

#1681

Includes: 1 Coaster

Colors: Frosted Resin and Acacia Wood

Imprint Area: Specify on Order

Wood: 2 3/4" x 2"

Resin: 2 3/4" x 5/8" (Pad Print Only)

Maximum Imprint Colors: 2

Item Size: 3 7/8" x 3 7/8"

Packaging: Natural Kraft Packaging



Acacia Wood & Resin Coaster Set

#1684

Includes: 4 Coasters w/Metal Holder

Colors: Frosted Resin and Acacia Wood

Coasters w/Gold Holder

Imprint Area: Specify on Order

Wood: 2 3/4" x 2"

Resin: 2 3/4" x 5/8" (Pad Print Only)

Maximum Imprint Colors: 2

Item Size:

Coaster: 3 7/8" x 3 7/8"

Metal Holder: 4 5/16" x 4 5/16" x 1 11/16"

Packaging: Natural Kraft Packaging





Woodlands Coaster

Colors: Natural Poplar Wood
Imprint Area: 2" x 2"
Maximum Imprint Colors: 1
Coaster Size: Approx. 4" Dia. x 7/16"
Packaging: Burlap Drawstring Bag

Each natural Poplar wood coaster is unique in structure, resulting in color and size variations

Repeated use creates a weathered patina, adding to its overall warmth and character

Packaged in reusable drawstring closure burlap bags made from natural jute

Woodlands Coaster

#1671
Includes: 1 Woodlands Coaster in a Reusable Burlap Bag
Burlap Bag Size: 5 1/4" x 6 5/8"

Woodlands Coaster Duo

#1672
Includes: 2 Woodlands Coasters in a Reusable Burlap Bag
Burlap Bag Size: 5 1/4" x 6 5/8"

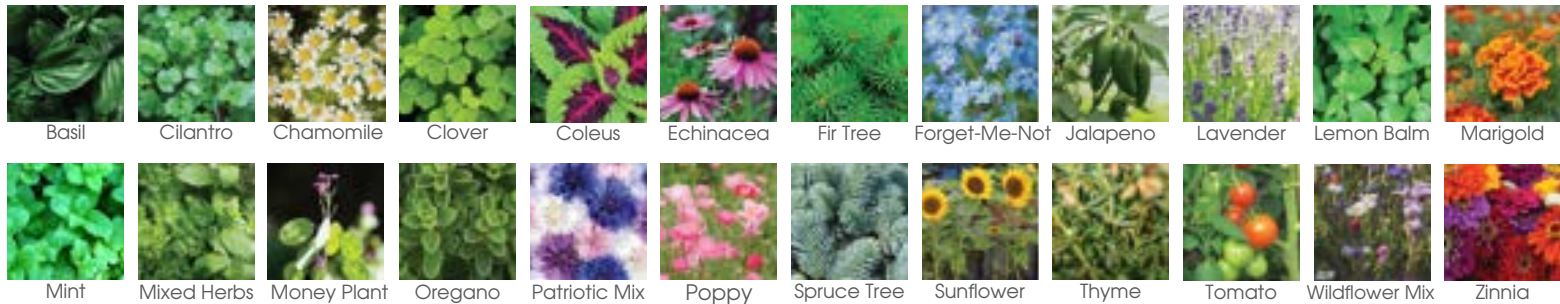
Woodlands Coaster Set

#1674
Includes: 4 Woodlands Coasters in a Reusable Burlap Bag
Burlap Bag Size: 6 1/4" x 7 3/4"





Available Seed Options



Bring a hint of the woody outdoors to your home or workspace with these mini campfire mug planters

Each kit comes packaged in a cheerful kraft gift box which contains a mini campfire mug planter, seed packet, peat pellet, and planting instructions

Constructed from durable carbon steel with a speckled powder coating finish - just like the classic full size mug!

Mini Campfire Mug Blossom Kit #5657

Includes: 1 Seed Packet (Specify on Order), 1 Peat Pellet, 1 Mini Campfire Mug Planter, and Natural Kraft Box w/Instructions

Colors: White, Green, Red, Blue, or Black

Imprint Area: 1" x 3/4"

Maximum Imprint Colors: 2

Item Size:

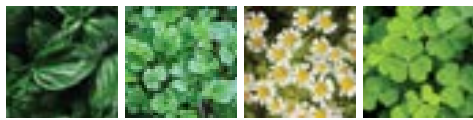
Mug: 2 13/16" x 1 7/8" x 2 3/16" Dia.

Box: 2 15/16" x 2 7/16" x 2 3/16"

Packaging: Kraft Packaging



— Available Seed Options —



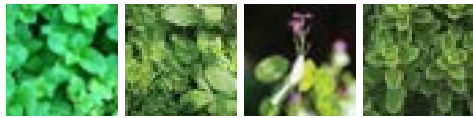
Basil Cilantro Chamomile Clover



Coleus Echinacea Fir Tree Forget-Me-Not



Jalapeno Lavender Lemon Balm Marigold



Mint Mixed Herbs Money Plant Oregano



Patriotic Mix Poppy Spruce Tree Sunflower



Thyme Tomato Wildflower Mix Zinnia



Ceramic Planter Set

#5662

Includes: 1 Seed Packet (Specify on Order), 1 Peat Pellet, and 1 Ceramic Planter Set

Colors: White Planter and Bamboo Legs

Imprint Area: 1 3/8" x 1 3/4"

Maximum Imprint Colors: 2

Item Size:

Planter: 3 3/4" Dia. x 3"

Legs: 4 1/8" x 4 1/8" x 1 7/8"

Packaging: Individually Boxed

Silkscreen:

Silkscreen Area: 9 1/2" x 2"

Maximum Imprint Colors: 1



Designed with a nod to modern minimalism, this planter set provides any room or workspace with an additional touch of style

Each planter set includes a ceramic planter, a bamboo leg set, a seed packet, and a peat pellet packaged in an informative brown kraft box

The two-piece wooden bamboo stand fits firmly together, allowing the ceramic planter to rest snugly on top

This set showcases a neutral and versatile design which complements nearly all decor aesthetics



Available Seed Options



Wooden Cube Blossom Kit

#5650

Includes: 1 Seed Packet (Specify on Order), 1 Peat Pellet, 1 Wooden Cube Planter w/Plastic Liner, and 4CP Packaging w/Imprint on Top

Colors: Natural Pine Wood

Imprint Area: 2 3/8" x 2 3/8"

Maximum Imprint Colors: 2

Item Size: 3" x 3" x 3"

Packaging: 4CP Packaging



Constructed from natural pine wood with a plastic liner designed to protect the wood from water damage

Includes wooden cube planter, seed packet, peat pellet, and 4CP packaging wrap with printed planting instructions

Pricing includes a one color/location imprint with full color logo on top of 4CP packaging wrap

Colorful Full Color Decorating option available

— Available Seed Options —



Basil Cilantro Chamomile Clover



Coleus Echinacea Fir Tree Forget-Me-Not



Jalapeno Lavender Lemon Balm Marigold



Mint Mixed Herbs Money Plant Oregano



Patriotic Mix Poppy Spruce Tree Sunflower



Thyme Tomato Wildflower Mix Zinnia



Each blossom kit ornament comes with everything required to start growing: your choice of seeds, peat pellets, and an ornament that can double as the planter!

Made with a blend of 85% PLA, PBS, and wheat straw material, this ornament is both durable and aesthetically-pleasing

Packaged in a natural gift box that includes detailed usage instructions

Blossom Kit Ornament
#1782

Colors: Natural
Imprint Area: 1 3/8" Dia.
Maximum Imprint Colors: 2
Item Size: 3" Dia.
Packaging: Individually Boxed





Shatter Resistant Ornament
#1790

Colors: Black, Gold, Red, Green, Orange, Silver, Purple, Blue, or Pearl
Imprint Area: 1 3/8" x 1 3/8"
Maximum Imprint Colors: 2
Item Size: 3 1/4" Dia.
Packaging: Clamshell

These practical holiday ornaments are designed to be lightweight and long-lasting

Available in 10 vibrant semi-matte colors

Constructed from shatter-resistant polystyrene



Presentation Box



Mini Campfire Mug Ornament

#1714

Colors: White, Green, Red, Blue, or Black w/Twine Cord

Imprint Area: 1" x 3/4"

Maximum Imprint Colors: 2

Item Size:

Mug: 2 13/16" x 1 7/8" x 2 3/16" Dia.

Box: 2 15/16" x 2 7/16" x 2 3/16"

Packaging: Kraft Packaging

Perfect for adding a bit of rustic charm to a Christmas tree or ornament stand for the holidays

Packaged in a decorative kraft gift box and includes a twine cord for hanging

Constructed from durable carbon steel and finished with a speckled powder coating





**Shatter Resistant
Flat Round Ornament**
#1791

Colors: Green, Red, Blue,
Silver, Purple, Gold, Black, or Pearl
Imprint Area: 2" Dia.
Maximum Imprint Colors: 2
Item Size: 3 1/8" Dia. x 3/4"
Packaging: Clear Acetate Box



These practical holiday ornaments are designed to be lightweight and long-lasting

Available in 8 vibrant semi-matte colors

Constructed from shatter-resistant polystyrene

Colorful full color decoration option available



Acetate Box



**Shatter Resistant
Flat Star Ornament**

#1792

Colors: Green, Red, Blue,
Silver, Purple, Gold, Black, or Pearl

Imprint Area: 1 3/8" x 1 1/4"

Maximum Imprint Colors: 2

Item Size: 3" x 3" x 3/4"

Packaging: Clear Acetate Box



*These practical holiday ornaments are designed
to be lightweight and long-lasting*

Available in 8 vibrant semi-matte colors

Constructed from shatter-resistant polystyrene

Colorful full color decoration option available



Acetate Box



Light-Up Glass Ornament

#1785

Includes 3 Button Cell Batteries

Colors: Red, Blue, Silver, or Gold

Imprint Area: 1 3/8" x 1 1/4"

Maximum Imprint Colors: 2

Item Size: 3" Dia.

Packaging: Clear Acetate Box

Beautiful glass with laser etched snowflake design allows color changing LED lights to shine through

Includes an on/off switch and replaceable batteries



Acetate Box



Light-Up Shatter Resistant Ornament

#1786

Includes 3 Button Cell Batteries
Colors: Frosted, Frosted Green, Frosted Blue, or Frosted Red
Imprint Area: 1 1/2" x 1 1/4"
Maximum Imprint Colors: 2
Item Size: 3" Dia.
Packaging: Clear Acetate Box

Features color changing LED lights

Includes on/off switch and replaceable batteries



Acetate Box



Hand Blown Glass Ornament
#1787

Colors: Frosted Green, Frosted Blue, Frosted Red, Frosted, or Iridescent
Imprint Area: 1 1/8" x 1 1/8"
Maximum Imprint Colors: 2
Item Size: 3 1/8" Dia.
Packaging: Clear Acetate Box

Each beautiful glass ornament is hand blown

Individually packaged in a decorative presentation box

Silver hanging string included



Acetate Box



Holiday Glitz Ornament
#1781

Colors: Red, Blue, Pearl, Silver, or Gold
Imprint Area: 1 3/8" Dia.
Maximum Imprint Colors: 2
Item Size: 3 1/8" Dia.
Packaging: Clear Acetate Box

Add some sparkle to your festivities with these unique Holiday Glitz Ornaments

Each ornament houses sparkling coils of glitter

Available in 5 dazzling holiday colors

Constructed from lightweight and robust PET



Acetate Box



Elevate your holiday decor with our Beveled Glass Ornament, offering a touch of elegance in your choice of two shapes - circle and hexagon, adding a personalized touch to your promotion

Each ornament is thoughtfully presented in a sleek black gift box, securely nestled with a protective foam base, ensuring it arrives safely and beautifully

The silver ribbon adds a touch of festive charm, making it ready to hang on your tree right away



1715 Circle

Imprint Area: 2" x 1 1/2"
Item Size: 3" Dia. x 1/8"

1715 Hexagon

Imprint Area: 2" x 1 1/2"
Item Size: 3" x 3 7/16" x 1/8"



Beveled Glass Ornaments

#1715

Colors: Clear w/Silver Ribbon

Maximum Imprint Colors: 2

Packaging: Black Gift Box





1789 Circle

Imprint Area: 1 1/2" x 1 1/2"
Item Size: 3" Dia. x 1/8"



1789 Gift Tag

Imprint Area: 1 1/2" x 1 1/2"
Item Size: 2 5/16" x 3 1/16" x 1/8"



1789 Oval

Imprint Area: 1 1/4" x 1 1/4"
Item Size: 2 3/8" x 3 1/8" x 1/8"



1789 Star

Imprint Area: 1" x 1"
Item Size: 3" x 3" x 1/8"



Hammered Glass Ornament

#1789

Colors: Clear w/White Ribbon

Maximum Imprint Colors: 2

Box Size: 4 5/8" x 5" x 3/4"

Packaging: Gray Gift Box



These festive ornaments feature a hammered texture and gray gift box

Colorful full color decorating available



1793 Circle
Imprint Area: 2" x 1 1/2"
Item Size: 2 7/8" Dia. x 1/8"



1793 Oval
Imprint Area: 1 5/8" x 1 1/2"
Item Size: 2 1/4" x 3 1/4" x 1/8"



1793 Star
Imprint Area: 1 3/4" x 1 3/8"
Item Size: 3 1/8" x 3 1/8" x 1/8"

Made with high quality ceramic glazed to a high gloss finish

Each piece includes an attached gray cord for hanging

Packaged in a soft velveteen tray & placed in a shimmering silver box

Ceramic Ornament

#1793

Colors: White w/Gray Cord

Maximum Imprint Colors: 2

Box Size: 4 1/2" x 5" x 3/8"

Packaging: Silver Gift Box





Made from natural slate stone, each charming piece features its own unique texture and characteristics

A jute twine cord compliments the natural look and feel of these elegant ornaments

Packaged in a velvety black tray and onyx presentation box



1784 Gift Tag

Imprint Area: 1 1/2" x 1 1/2"
Item Size: 2 5/16" x 3 1/16" x 3/16"

Slate Ornament

#1784

Colors: Natural Black Slate w/Twine Cord

Maximum Imprint Colors: 2

Box Size: 4 3/8" x 4 3/8" x 3/4"

Packaging: Onyx Presentation Box



1784 Round

Imprint Area: 1 1/2" x 1 1/2"
Item Size: 3" Dia. x 3/16"



1799 Circle
Imprint Area: 1 1/2" x 1 1/2"
Item Size: 3" Dia. x 3/64"



1799 Square Bracket
Imprint Area: 1 3/4" x 1 3/4"
Item Size: 3" x 3" x 3/64"



1799 Rectangle Bracket
Imprint Area: 2 1/2" x 1 1/2"
Item Size: 4 1/4" x 3" x 3/64"



Silver Drawstring Pouch

Metal Ornament

#1799

Colors: White w/Silver Pouch

Maximum Imprint Colors: 2

Pouch Size: 4" x 6" x 1/64"

Packaging: Silver Drawstring Pouch



Available in three classic holiday shapes

Made with high-quality aluminum and includes a gray ribbon for hanging

Packaged in a protective shimmering gray satin drawstring pouch



Envelope
Front



1796 Ornament

Imprint Area: 1 1/4" Dia.

Item Size: 2 7/8" x 3 3/4" x 1/8"



1796 Tree

Imprint Area: 1 1/2" x 1"

Item Size: 3 3/8" x 3 3/8" x 1/8"



1796 Snowflake

Imprint Area: 1 5/8" dia.

Item Size: 3 1/2" x 3 1/2" x 1/8"

Wood ornament comes packaged in a natural kraft envelope

Colorful full color decorating available

Wood Ornament

#1796

Colors: Wood w/Twine Cord

Maximum Imprint Colors: 2

Envelope Imprint Area: 3 1/4" x 1 1/2"

Envelope Size: 3 7/8" x 3 7/8"

Packaging: Kraft Packaging



Envelope
Back

Envelope
Front

Two Available
Imprint Areas



1796 Snowman

Imprint Area: 1 1/4" x 7/8"

Item Size: 3 1/2" x 2 1/4" x 1/8"

Wood Photo Ornament

#1797

Insert Size: 1 9/16" Dia.

Colors: Wood w/Twine Cord

Imprint Area: Specify on Order

Ornament: 1 1/4" x 1 1/4"

Envelope: 3 1/4" x 1 1/2"

Maximum Imprint Colors: 2

Item Size:

Ornament: 3 5/16" x 3 13/16" x 1/4"

Envelope: 3 7/8" x 3 7/8"

Packaging: Kraft Packaging



1788 Envelope

1797 Envelope

Each ornament comes packaged in a natural kraft envelope with a complimentary twine cord for hanging included

An excellent holiday promotion as well as a special event keepsake includes a polystyrene lens to protect your image

Decoration on the ornament, as well as the envelope, are available



Can be hung vertically or horizontally

Wood Frame Photo Ornament

#1788

Insert Size: 2" x 3"

Colors: Wood w/Twine Cord

Imprint Area: Specify on Order

Vertical: 1 1/2" x 2 1/2"

Horizontal: 2 1/2" x 1 1/2"

Envelope: 3" x 3"

Maximum Imprint Colors: 2

Item Size:

Ornament: 3 1/2" x 4 5/8" x 5/16"

Envelope: 4 5/16" x 5 3/8" x 1/4"

Packaging: Kraft Packaging

Custom inserts can be added for an additional charge

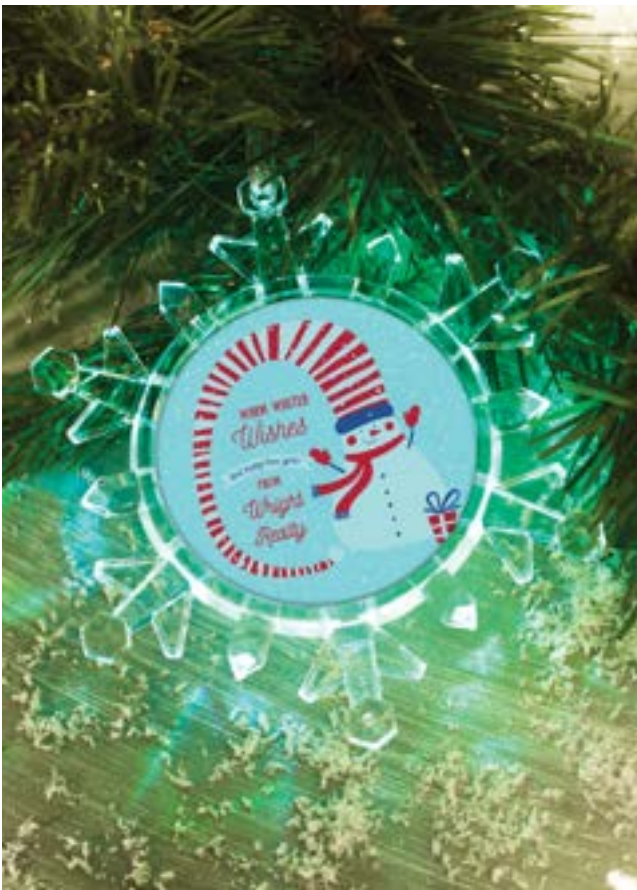
Snap-In Snowflake #985

Colors: Clear w/Frosted Flare Tips
Insert Size: 2 - 2 7/8" Dia.
Imprint Area: 2 5/8" Dia.
Maximum Imprint Colors: 1
Item Size: 5" x 5 3/4"
Packaging: Layer Packed Unassembled



Snap-In Snowflake #987

Colors: Clear w/Flare Tips
Insert Size: Holds 2 - 2 1/4" Dia.
Imprint Area: 2" Dia.
Maximum Imprint Colors: 1
Item Size: 4 3/4" x 5 1/2"
Packaging: Layer Packed Unassembled



On/off switch located on the back activates the color changing blue, red, and green LED lights

Custom inserts can be added for an additional charge

Light Up Photo Snowflake Ornament #1776

Includes: 3 Button Cell Batteries
Colors: Clear w/Silver Ribbon
Insert Size: 2 1/4" Dia.
Imprint Area: 2" Dia.
Maximum Imprint Colors: 2
Item Size: 3 1/4" x 4 1/4" x 1/8"
Packaging: Clamshell



Retail Style Packaging





Made from high quality 800g plush material

Plush Santa Hat

#6635

Colors: Red, Green, or Blue w/White Trim

Item Size: 11 1/2" x 17 1/2"
(One Size Fits Most)

Packaging: Bulk
Blank Only

Made from high quality 800g plush material



Plush Christmas Stocking

#6677

Colors: Green, Pink, Blue,
Purple, or Red w/White Trim

Item Size: 17 7/16" x 9"

Packaging: Bulk
Blank Only



Plush Antlers

#20608

Colors: Brown

Item Size: 11 3/4" x 19 1/2"
(One Size Fits Most)

Packaging: Bulk
Blank Only



These charming miniature Christmas stockings measure just over 7" tall

Perfect for gift cards, treats, and even pets!

Mini Felt Christmas Stocking

#6707

Colors: Red, Blue, or Green

Imprint Area: 3" x 1 1/4"

No PMS Match Available

Maximum Imprint Colors: 1

Item Size: 4 1/2" x 7" x 1/4"

Packaging: Bulk



Felt Santa Hat

#6735

Colors: Blue, Green, or Red w/White Trim

Imprint Area: 6" x 1 1/2"

Maximum Imprint Colors: 1

No PMS Match Available

Item Size: 11 3/4" x 19 1/2"

(One Size Fits Most)

Packaging: Bulk

These traditional Santa hats are made of lightweight felt

Each hat features a bright white cuff and pom-pom tip

One size fits most



Felt Christmas Stocking

#6777

Colors: Blue, Green, Pink, or Red w/White Trim

Imprint Area: 4" x 2"

Maximum Imprint Colors: 1

No PMS Match Available

Item Size: 10 1/2" x 16"

Packaging: Bulk

Each full-sized felt stocking is over 16" tall, which means there is plenty of room for holiday gifts and treats!

Made from lightweight felt, they make a perfect addition to the holiday mantle



Wooden Block Set

#285

Colors: Natural Pine Wood w/Red, Light Blue, Dark Blue, Orange, Green, and Brown Designs

Imprint Area: 1 1/2" x 1 1/2" (Each Block)

Maximum Imprint Colors: Full Color

Item Size:

Blocks: 1 3/4" x 1 3/4" x 1 3/4"

Tray: 6 3/16" x 6 1/8" x 1 1/2"

Overall: 6 3/16" x 6 1/8" x 2"

Packaging: Natural Kraft Box



This nine piece block set is made from resilient pine wood and comes nestled in its own convenient wooden storage tray. Each block has five preprinted sides that feature numbers, letters, and various designs. Pricing includes a 1 1/2" x 1 1/2" full color imprint, up to nine different designs, on the blank side of each block. Each set is packaged in a kraft window box. CPSIA and CCPSA compliant.

Wooden Jigsaw Puzzle

#276

Colors: Natural Wood

Imprint Area: 7 3/8" x 7 3/8"

Maximum Imprint Colors: Full Color

Item Size: 8 3/4" x 8 3/4" x 1/4"

Packaging: Shrink Wrapped



Jigsaw puzzles are shown to improve problem solving skills, as well as increasing overall perception and understanding.

Includes wood storage tray and 16 jigsaw pieces.

Pricing includes Colorfy full color decorating.

CPSIA and CCPSA compliant.



Wooden Truck

#275

Colors: Natural Wood w/Black Accents

Imprint Area:

Pad Print: 3" x 1"

Colorfy: 3 9/16" x 1 5/8"

Maximum Imprint Colors: 2

Item Size: 7 1/2" x 2 7/8" x 2"

Packaging: Individually Boxed



Decoration on opposite side of truck available
Additional run charges and set-up apply

Wooden Semi Truck

#278

Colors: Natural Wood w/Black Accents

Imprint Area:

Pad Print: 4" x 1"

Colorfy: 4 7/8" x 1 1/4"

Maximum Imprint Colors: 2

Item Size: 8 3/8" x 2 7/8" x 1 7/8"

Packaging: Individually Boxed



Decoration on opposite side of truck available
Additional run charges and set-up apply

Wooden Train Set

#273

Colors: Natural Wood w/Black Accents

Imprint Area:

Pad Print: 3 1/2" x 1 1/4"

Colorfy: 3 7/16" x 1 1/16"

Maximum Imprint Colors: 2

Item Size: 15" x 3 13/16" x 2 1/8"

Packaging: Individually Boxed



Decoration on opposite side of train cars available
Additional run charges and set-up apply

Wooden Airplane

#280

Colors: Natural Wood

Imprint Area:

Pad Print: 5" x 1"

Colorfy: 6 1/2" x 1"

Item Size: 7 3/4" x 7" x 3 5/8"

Maximum Imprint Colors: 2

Packaging: Individually Boxed



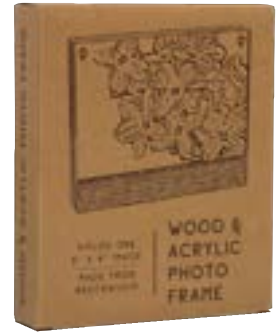
Perfect for use as a keepsake

Made of wood and features rolling wheels

CPSIA and CCPSA compliant

This 6 x 4 picture frame has a minimalist design that works for both modern and traditional decor and the photo frame base is made from natural beechwood and features a magnetic acrylic cover

Each acrylic cover comes with a protective sticker which should be removed before use



6 x 4 Wood & Acrylic Frame #6346

Insert Size: 6" x 4"

Colors: Natural Beechwood

Imprint Area: 5" x 5/8"

Maximum Imprint Colors: 2

Item Size: 6" x 4 15/16" x 1"

Packaging: Individually Boxed



Display cherished memories in style with this 4 x 6 Alder Wood Frame, designed to bring warmth and elegance to any space

Crafted from high-quality alder wood, this frame showcases the wood's light color, straight grain, and resistance to warping, ensuring a lasting and beautiful display

4 x 6 Alder Wood Frame

#3629

Colors: Natural

Imprint Area: Specify on Order

Vertical: 3 1/2" x 3/4"

Horizontal: 5 1/2" x 3/4"

Maximum Imprint Colors: 2

Item Size: 6 1/2" x 8 1/2" x 9/16"

Packaging: Individually Boxed





This versatile Beechwood Candle Holder is perfect for elevating your space as a desk accessory, home decor piece, appreciation gift, or even a stunning event centerpiece.

Each set includes a solid beechwood candle holder and a 2 oz glass votive filled with unscented soy wax, ensuring a serene and clean burning experience with a relaxing ambiance, non-toxic properties, and a cooler, longer burn compared to traditional paraffin waxes



Beechwood Cube Candle Holder

#5800

Color: Natural Beechwood

Imprint Area: 2" x 2"

Maximum Imprint Colors: 2

Item Size: 3" x 3" x 3"

Packaging: Individually Boxed



Meets ASTM F2179-2020, F2417-17, F2601-11, and F2058-2007(2001)

Snow Globe Photo Frame

#2711

Insert Size: 4" x 6"

Colors: Clear w/White Snow and Silver Glitter Snowflakes

Imprint Area: Specify on Order

Vertical: 3 1/2" x 3/4"

Horizontal: 5 1/2" x 3/4"

Item Size: 6 1/4" x 4 1/4" x 1 1/8"

Maximum Imprint Colors: 4

Packaging: Individually Boxed



All snow globe designs allow for quick and easy photo insertion

Custom printed inserts available (contact for details and pricing)

Holds an Instax Mini Film photo

The clear plastic frame contains snow, glitter, and silver snowflakes that move around

To insert your photo pop out the plastic lens on the back of the frame, insert your photo, snap in the plastic lens, and shake!

Instax Mini Snow Picture Frame

#2756

Insert Size: 2 1/8" x 3 3/8"

Colors: Clear w/White Snow and Silver Glitter Snowflakes

Imprint Area: Specify on Order

Vertical: 1 3/4" x 1/2"

Horizontal: 3" x 1/2"

Maximum Imprint Colors: 2

Item Size: 2 1/2" x 3 3/4" x 1"

Packaging: Individually Boxed





#2718

#2721

Mini Photo Globe

#2718

Insert Size: 1 5/8" x 3 5/16"

Colors: Clear w/Black or Silver Base

Imprint Area: 1 1/8" x 3/4"

Maximum Imprint Colors: 2

Item Size: 3 1/8" x 4"

Packaging: Individually Boxed

Sphere Globe

#2721

w/Pliable Surface

Insert Size: 2 - 2" x 2 7/8"

1/2" on Bottom of Insert Inserts Into Base

Colors: Clear w/Black Base

Imprint Area: 1 1/4" x 3/4"

Maximum Imprint Colors: 2

Item Size: 4 1/4" x 4 3/4"

Packaging: Individually Boxed

US Patent #6,027,774

Gift Card Snow Globe

#2707

Insert Size: 2 - 3 3/8" x 2 1/8"

Colors: Clear Dome w/Black Base

Imprint Area: 2 3/4" x 7/16"

Maximum Imprint Colors: 2

Item Size: 4 1/8" x 3 3/4" x 2 1/8"

Packaging: Individually Boxed

Sphere Snow Globe

#2749

w/Pliable Surface

Insert Size: 2 - 2" x 2 7/8"

Colors: Clear w/Silver Base

Imprint Area: 1 3/8" x 5/8"

Maximum Imprint Colors: 2

Item Size: 4 1/4" x 6" x 4"

Packaging: Gift Box



#2749

#2718



#2707

Each snow globe holds two photos, one on each side

Constructed of a soft pliable plastic surface

Pull the base off the bottom, insert your photos, push the base back on, and shake!

Over 20 snow globe styles and sizes available



**6 x 4 Beveled
Glass Frame**

#9164

w/Black Easel Velvet Back and Glass Front

Insert Size: 6" x 4"

Colors: Clear w/Silver Trim

Imprint Area: 6" x 1 1/4"

Maximum Imprint Colors: 2

Item Size: 8" x 7" x 1/8"

Packaging: Individually Boxed

Elegant beveled glass with velvet easel

Also available in horizontal format (#9166)

**6 x 4 Beveled Glass
Frame w/Metal Accent**

#9165

w/Black Easel Velvet Back and Glass Front

Insert Size: 6" x 4"

Colors: Clear w/Silver Trim

Imprint Area: 2 1/4" x 1/2"

Maximum Imprint Colors: 2

Item Size:

Frame: 8" x 7" x 1/8"

Metal Accent: 2 7/8" x 1" x 1/16"

Packaging: Individually Boxed



6 x 4 Glass Frame

#8164

w/Glass Front

Insert Size: 6" x 4"

Colors: Silver Base

Imprint Area: 5" x 1"

Maximum Imprint Colors: 2

Item Size: 6" x 4 3/4" x 5/8"

Packaging: Individually Boxed



Crafted in a wooden fence style with a distressed whitewash finish

Holds a 6 x 4 photo and has an easel back for tabletop display

Colorful full color decorating option available

6 x 4 Distressed Wood Frame

#3630

w/MDF Back and Glass Front

Insert Size: 6" x 4"

Colors: Whitewashed Wood

Imprint Area: 2" x 1 1/2"

Maximum Imprint Colors: 2

Item Size: 7 7/8" x 7" x 13/16"

Packaging: Individually Boxed





4 x 6 Album

#6164

Holds 24 - 4" x 6" Photos

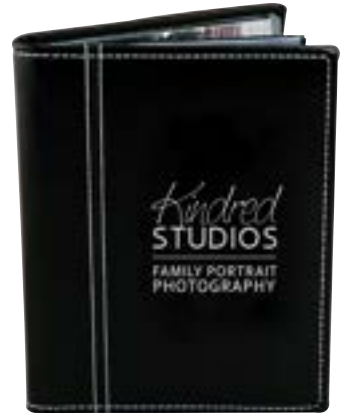
Colors: Black w/White Stitching

Imprint Area: 2 3/4" x 4 1/2"

Maximum Imprint Colors: 1

Item Size: 5" x 6 1/2" x 3/4"

Packaging: Individually Boxed



62

4 x 6 Stitch Frame

#6146

w/Black Velvet Back and Glass Front

Insert Size: 4" x 6"

Material: Leatherette

Colors: Black w/White Stitching or White w/White Stitching

Imprint Area: Specify on Order

Vertical: 4" x 3/4"

Horizontal: 5" x 3/4"

Maximum Imprint Colors: 1

Item Size: 6 1/2" x 8 1/2"

Packaging: Individually Boxed



62

- Ideal for festivals, special events, as well as greeting cards
- Other sizes and stock photo mounts available



5x7 Custom Photo Mount
#F57

Photo Viewing Area: 4 7/8" x 6 11/16"
Item Size: 7 1/2" x 9 1/2"
Outside Cover Area: 6 3/4" x 6 1/2"
Inside Imprint Area: 4 1/2" x 1 1/4"

7x5 Custom Photo Mount
#F75

Photo Viewing Area: 6 5/8" x 4 5/8"
Item Size: 9 1/2" x 7 1/2"
Outside Cover Area: 8 7/8" x 7"
Inside Imprint Area: 6" x 1 1/4"

4x6 Custom Photo Mount
#F46

Photo Viewing Area: 3 5/8" x 5 11/16"
Item Size: 5 7/8" x 7 3/8"
Outside Cover Area: 5 5/16" x 6 7/8"
Inside Imprint Area: 3 3/8" x 5/8"

6x4 Custom Photo Mount
#F64

Photo Viewing Area: 5 5/8" x 3 5/8"
Item Size: 6 7/8" x 6"
Outside Cover Area: 6 3/8" x 5 3/8"
Inside Imprint Area: 5" x 1"

Outside: Full Color Maximum
Inside: 4 Spot Color Maximum

Custom photo mounts: full color customized fronts and up to 4 spot colors inside



Photo Strip Easel Frame

#441

Insert Size: 2" x 6"
Colors: Clear
Imprint Area: 1 7/8" x 1/2"
Maximum Imprint Colors: 2
Item Size: 2" x 6 1/8" x 1/8"
Packaging: Polybagged



Get Social With Us!



PLEASE CHECK WWW.ILLINILINE.COM FOR THE MOST CURRENT PRICING
ALL PRICING IS SUBJECT TO CHANGE WITHOUT NOTICE