

2024  
2024  
**2024**  
COLLECTION  
2024

stallindustries

  
pro towels

ASI 79750  
PPAI 112755  
SAGE 52093  
[WWW.PROTOWELS.COM](http://WWW.PROTOWELS.COM)



# CONTENTS



**BEACH**



**SUBLIMATION**



**GOLF**



**SPORT/RALLY**



**BLANKETS**



**LIFESTYLE**





**CLICK FOR MORE INFO!**  
This is an interactive catalog. Click on items throughout for pricing and to learn more about the product!



**NEW**  
**NEW**  
**NEW**  
**NEW**





pro towels  
2024 COLLECTION

ASI 79750  
PPAI 112755  
SAGE 52093  
WWW.PROTOWELS.COM

BEACH  
BEACH  
BEACH



# MOST LIKELY TO...



...be a lifelong companion

**BT-10**



...make you feel like royalty

**PT-18**



...save the planet

**ENV-14**



...be used for all occasions

**PESH**



...leave the sand at the beach

**SR-4560**



...brighten your day

**SUB-17**





white only

## SMALL BEACH TOWEL

**2442**

24" x 42", 6.5lb./dz, terry velour, 100% cotton beach towel.

**Imprinted:** \$112.50 (g) per color. Imprinted price includes one color. Additional run charges apply: \$0.37 (g) per color/location.

**Embroidered:** \$93.76(g). Embroidery pricing includes up to 8k stitches. Additional stitches: \$0.27(g) per 1,000 stitches. \*For 2442 in color, see page 10.



white only

## JEWEL COLLECTION BEACH TOWEL

**BTV-8**

29" x 58", 8lb./dz, terry velour, hemmed, 100% cotton beach towel.

**Imprinted:** \$112.50 (g) per color. Imprinted price includes one color. Additional run charges apply: \$0.37 (g) per color/location.

WHITTE  
BEACH  
TOWELS





**HEAD TO THE BEACH**

**#1 BEACH  
SELLER**

**JEWEL COLLECTION  
BEACH TOWEL**

***BT-10***

30" x 60" 10lb./dz, terry velour, twill hemmed,  
100% cotton beach towel.

**Imprinted:** \$112.50 (g) per color. Imprinted price includes one color. Additional run charges apply: \$0.37 (g) per color/location. **Embroidered:** \$93.76(g). Embroidery pricing includes up to 8k stitches. Additional stitches: \$0.27(g) per 1,000 stitches.

\*For BT-10 in color, see page 10.





white  
only

## DIAMOND COLLECTION BEACH TOWEL

**BT-14**

35" x 60", 14lb./dz, terry velour, twill hemmed, 100% cotton beach towel.

**Imprinted:** \$112.50 (g) per color. Imprinted price includes one color. Additional run charges apply: \$0.37 (g) per color/location.  
**Embroidered:** \$93.76(g). Embroidery pricing includes up to 8k stitches. Additional stitches: \$0.27(g) per 1,000 stitches.



white  
only

## DIAMOND COLLECTION BEACH TOWEL

**BT-17**

35" x 60", 17lb./dz, terry velour, twill hemmed, 100% cotton midweight beach towel.

**Imprinted:** \$112.50 (g) per color. Imprinted price includes one color. Additional run charges apply: \$0.37 (g) per color/location.  
**Embroidered:** \$93.76(g). Embroidery pricing includes up to 8k stitches. Additional stitches: \$0.27(g) per 1,000 stitches.



NEW!



## PLATINUM COLLECTION BEACH TOWEL

### ***BT-20***

35" x 70", 20lb./dz, terry velour, twill hemmed, 100% cotton heavyweight beach towel.

**Imprinted:** \$112.50 (g) per color. Imprinted price includes one color. Additional run charges apply: \$0.37 (g) per color/location.

**Embroidered:** \$93.76(g). Embroidery pricing includes up to 8k stitches. Additional stitches: \$0.27(g) per 1,000 stitches.



PLATINUM





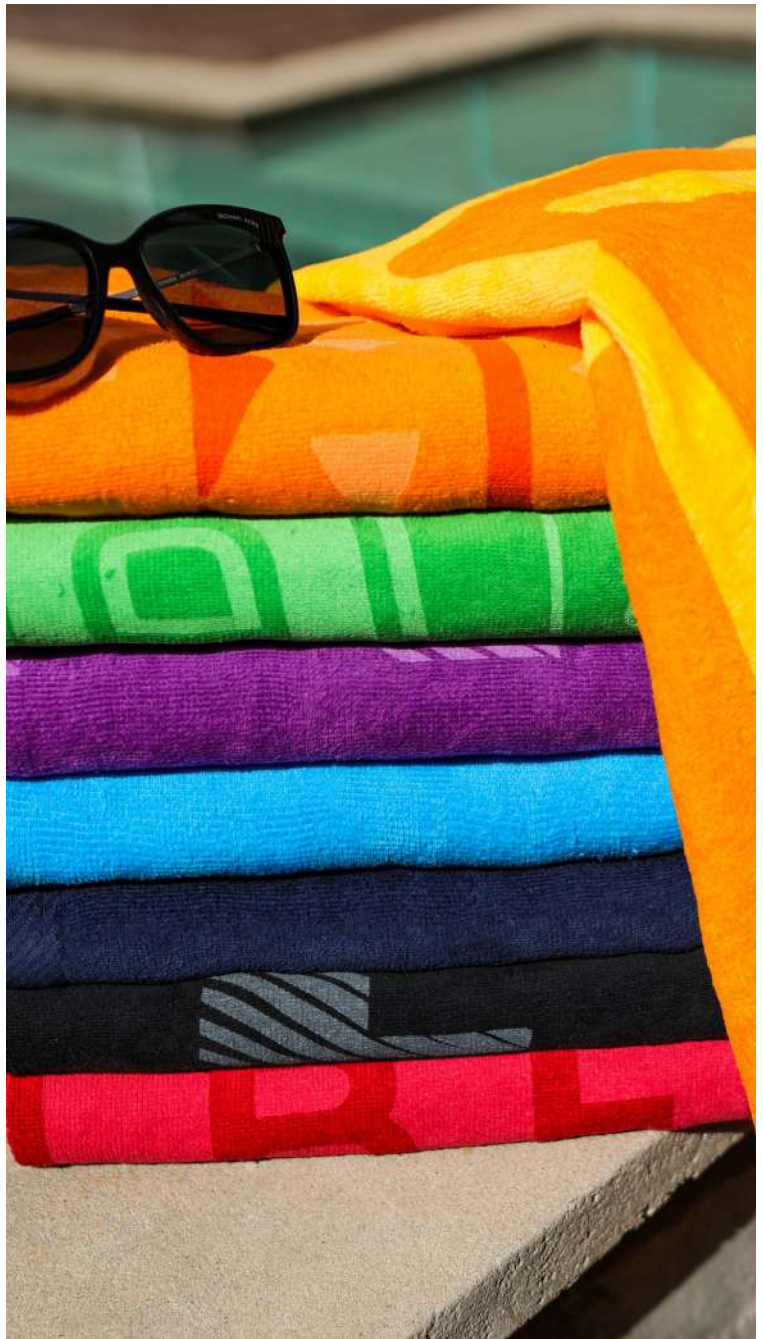
## SMALL BEACH TOWEL

**2442**

24" x 42", 6.5lb./dz, terry velour, 100% cotton beach towel.

**Imprinted:** \$112.50 (g) per color. Imprinted price includes one color. Additional run charges apply: \$0.37 (g) per color/location.

**Embroidered:** \$93.76(g). Embroidery pricing includes up to 8k stitches. Additional stitches: \$0.27(g) per 1,000 stitches. For 2442 in white, see page 6.



## JEWEL COLLECTION

### BEACH TOWEL

**BT-10C**

30" x 60" 10lb./dz, terry velour, twill hemmed, 100% cotton beach towel.

**Imprinted:** \$112.50 (g) per color. Imprinted price includes one color. Additional run charges apply: \$0.37 (g) per color/location.

**Embroidered:** \$93.76(g). Embroidery pricing includes up to 8k stitches. Additional stitches: \$0.27(g) per 1,000 stitches.

\*For BT-10 in white, see page 7.





NEW!



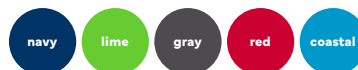
## SANDBAR STRIPE BEACH TOWEL

### **SBS-14**

35" x 60", 14lb./dz, terry velour, twill hemmed, 100% cotton striped cabana beach towel.

**Imprinted:** \$112.50 (g) per color. Imprinted price includes one color. Additional run charges apply: \$0.37 (g) per color/location.

**Embroidered:** \$93.76(g). Embroidery pricing includes up to 8k stitches. Additional stitches: \$0.27(g) per 1,000 stitches.



## DIAMOND COLLECTION COLORED BEACH TOWEL

### **BT-15**

35" x 60", 15lb./dz, terry velour, twill hemmed, 100% cotton midweight beach towel.

**Imprinted:** \$112.50 (g) per color. Imprinted price includes one color. Additional run charges apply: \$0.37 (g) per color/location.

**Embroidered:** \$93.76(g). Embroidery pricing includes up to 8k stitches. Additional stitches: \$0.27(g) per 1,000 stitches.







## STANDARD CABANA BEACH TOWEL

### **CB-10**

30" x 60" 10lb./dz, terry velour, twill hemmed, 100% cotton striped cabana beach towel.

**Imprinted:** \$112.50 (g) per color. Imprinted price includes one color. Additional run charges apply: \$0.37 (g) per color/location. \*Only solid black ink can be used for the imprinted embellishment option. **Embroidered:** \$93.76(g). Embroidery pricing includes up to 8k stitches. Additional stitches: \$0.27(g) per 1,000 stitches.



## MIDWEIGHT CABANA BEACH TOWEL

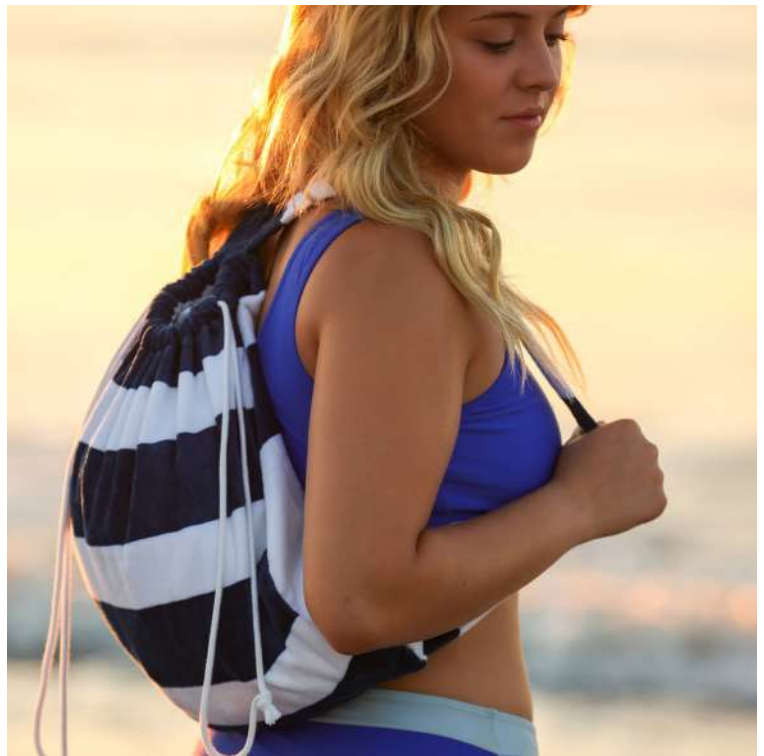
### **CB-15**

35" x 60", 15lb./dz, terry velour, twill hemmed, 100% cotton striped cabana beach towel.

**Imprinted:** \$112.50 (g) per color. Imprinted price includes one color. Additional run charges apply: \$0.37 (g) per color/location. \*Only solid black ink can be used for the imprinted embellishment option. **Embroidered:** \$93.76(g). Embroidery pricing includes up to 8k stitches. Additional stitches: \$0.27(g) per 1,000 stitches.







**TOTE YOUR**  
*SHORE*  
*BUDDY*  
**TOWEL WITH YOU**

**SHORE BUDDY**  
***SHOREBUDDY***

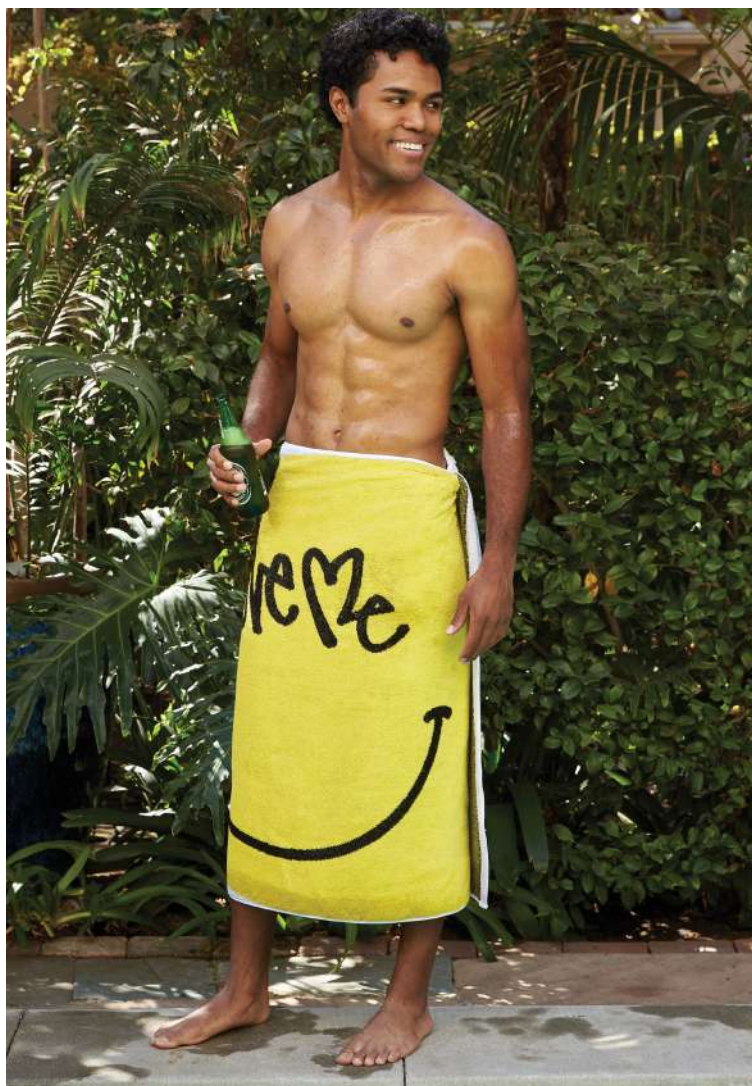
35" x 60", 14lb./dz, terry velour, twill hemmed, 100% cotton striped cabana beach towel.

**Imprinted:** \$112.50 (g) per color. Imprinted price includes one color. **Additional run charges apply:** \$0.37 (g) per color/location. **Embroidered:** \$93.76(g). Embroidery pricing includes up to 8k stitches. **Additional stitches:** \$0.27(g) per 1,000 stitches.



**SO MANY ADVANTAGES OF**  
**JACQUARD**  
**WOVEN**  
**BEACH TOWELS:**

- Low minimums: only 50 pieces
- USA-made towels
- Excellent value for small projects
- Rich look of jacquard weaving with up to 3 colors per line for clean and vibrant artwork and terry-hemmed edges
- Colors Available: See page 73



**CUSTOM JACQUARD WOVEN  
 BEACH TOWEL**

***CJW-66***

34" x 66", 23lb./dz, all terry hemmed, 100% cotton beach towel. USA made. Features the rich look of jacquard weaving.

Lead Time: 6-8 weeks. For shearing (velour) add \$28 (c)  
 \*Three colors max per weaving line.



**CUSTOM JACQUARD WOVEN  
 BEACH TOWEL**

***CJW-60***

34" x 60", 21lb./dz, all terry hemmed, 100% cotton beach towel. USA made. Features the rich look of jacquard weaving.

Lead Time: 6-8 weeks. For shearing (velour) add \$28 (c)  
 \*Three colors max per weaving line.





**CUSTOM**  
**FIBER**  
**REACTIVE**  
**TOWELS**

**RALLY TOWEL**

**CFR-1518** 15" x 18" | 1.3lb./dz

**SPORT TOWEL**

**CFR-1625** 16" x 25" | 2.5lb./dz

Take advantage of full-bleed capabilities with edge-to-edge printing on the 100% cotton custom fiber reactive towel. Low minimums and low pricing with as few as 600 towels.

**Lead Time:** 60-90 working days after receipt of P.O. & approved sample.





## **CUSTOM FIBER REACTIVE SMALL BEACH TOWEL**

### **CFR-2442**

24" x 42", 6.5lb./dz, terry velour, hemmed, 100% cotton beach towel. Minimum 600 pcs.

**Lead Time:** 60-90 working days after receipt of P.O. & approved sample.



## **CUSTOM FIBER REACTIVE BEACH TOWEL**

### **CFR-10**

30" x 60" 10lb./dz, terry velour, hemmed, 100% cotton beach towel. Minimum 600 pcs.

**Lead Time:** 60-90 working days after receipt of P.O. & approved sample.



## **CUSTOM FIBER REACTIVE MIDWEIGHT BEACH TOWEL**

### **CFR-14**

35" x 60", 14lb./dz, terry velour, hemmed, 100% cotton midweight beach towel. Minimum 600 pcs.

**Lead Time:** 60-90 working days after receipt of P.O. & approved sample.



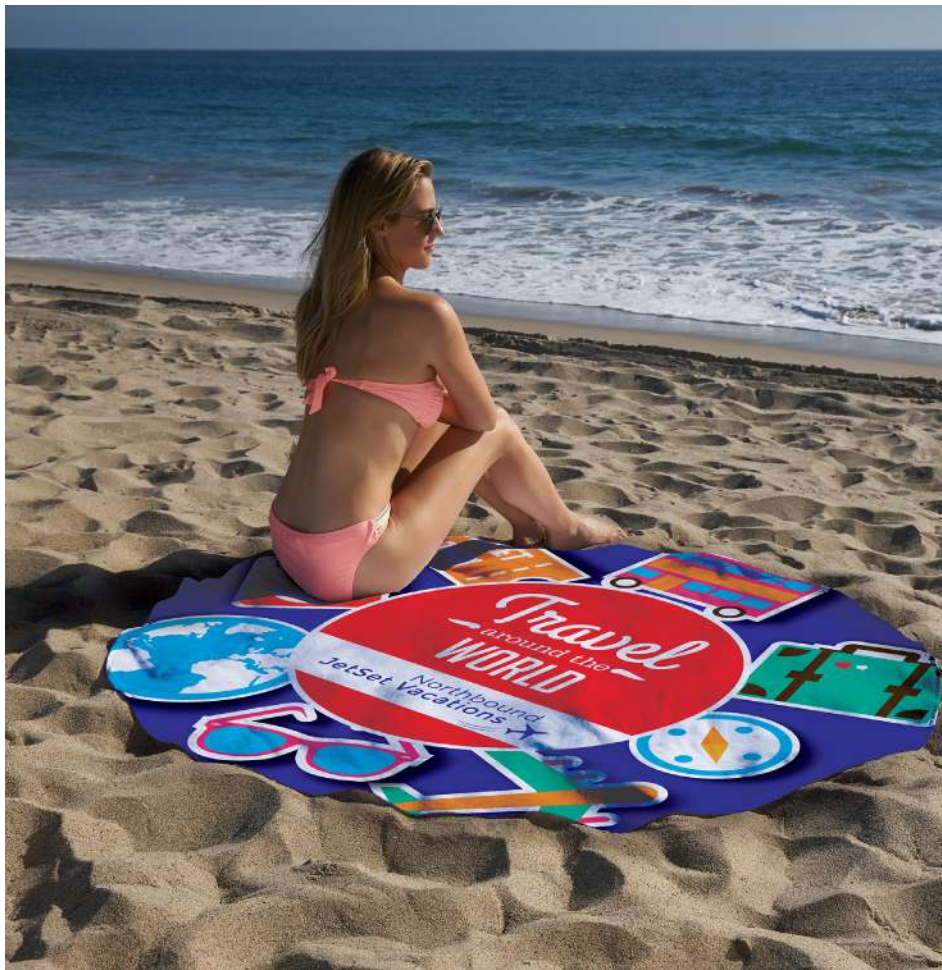


## **CUSTOM FIBER REACTIVE BEACH TOWEL**

### **CFR-18**

35" x 70", 18lb./dz, terry velour, hemmed, 100% cotton heavyweight beach towel. Minimum 600 pcs

**Lead Time:** 60-90 working days after receipt of P.O. & approved sample.



## **CUSTOM FIBER REACTIVE ROUND BEACH TOWEL**

### **CFR-60**

60" diameter, 20lb./dz, terry velour, hemmed, 100% cotton heavyweight towel. Minimum 600 pcs.

**Lead Time:** 60-90 working days after receipt of P.O. & approved sample.





SAND  
FREE!

**LEAVE THE SAND**  
*AT THE  
BEACH*

Sand provides a habitat for a variety of plants and animals, and it plays a role in the natural processes that shape the coast, such as erosion and sedimentation.

**SAND REPELLENT BEACH BLANKET**  
**SR4560**

Perfect for a day by the sea or lake, this beach blanket makes sure you leave the sand at the beach, and don't take it home in your clothes or car! 45" x 60", 100% polyester blend that repels sand. Dries quickly. Allergen-free. Rolls up easily, with black woven wrap with hook and loop closure.

**Imprinted:** \$112.50 (g) per color. Imprinted price includes one color. Additional run charges apply: \$0.37 (g) per color/location.

**Embroidered:** \$93.76(g). Embroidery pricing includes up to 8k stitches.

**Additional Stitches:** \$0.27(g) per 1,000 stitches. If wrap is to be embroidered.







## PESHTEMAL BEACH TOWEL

### PESH

39" x 70", 8lb./dz, 100% Turkish cotton striped beach towel with fringes. Can be worn as a skirt or shawl. Perfect beach accessory.

**Embroidered:** \$93.76(g). Embroidery pricing includes up to 8k stitches. **Additional stitches:** \$0.27(g) per 1,000 stitches.



## CUSTOM PESHTEMAL

### C-PESH

These unique Turkish towels allow you to design your own custom print featuring patterns, text, and more. The soft, lightweight cotton is perfect for drying off after a shower or lounging poolside. 35" x 60", 12lb./dz, 20% polyamide/ 80% polyester. Low minimums.

**Lead Time:** 60-90 working days after receipt of P.O. & approved sample. **Imprinted:** \$112.50 (g) per color. Imprinted price includes one color. Additional run charges apply: \$0.37 (g) per color/location. **Embroidered:** \$93.76(g). Embroidery pricing includes up to 8k stitches. **Additional stitches:** \$0.27(g) per 1,000 stitches.



A woman is seen from the side, holding up a large, light-colored towel with a subtle orange pattern. The towel is billowing in the wind. In the background, there is a sandy beach and the ocean with waves. The sky is overcast.

**SAND  
FREE!**

**HOA**  **KAI**  
*TURKISH  
TOWELS*  
**BORN ON THE BEACH**

**HOA KAI CUSTOM WOVEN  
PESHTEMAL**

***HOA KAI***

Born on the beaches of the small island Kaua'i, Hawaii; community and culture remain at the forefront of the Hoia Kai brand. These authentic Turkish towels are handwoven in a small village in Southeast Turkey. Its high quality, sand resistant and lightweight nature make it a necessity for your trips to the coast.

38" x 65" 8lbs./dz, 100% Turkish cotton.

**Lead Time:** 8-10 weeks. 1 color included, 2 color options available on orders over 300 pieces.

No setup fees. **FREE SHIPPING!**





SAND  
FREE!

## FOUR SEASONS STRIPED BLANKET

### **FSSB-5060**

50" x 60", 100% polyester throw featuring a tasseled edge. Vinyl zipper bag included.

**Embroidered/Lasered Patch:** \$93.76(g).

Embroidery pricing includes up to 8k stitches.

**Additional stitches:** \$0.27(g) per 1,000 stitches.

charcoal  
gray



## TEEMA STONE BLANKET

### **TM-BLST**

The Stone Blanket is a durable and versatile blanket. Every Stone blanket undergoes a stone washing process, giving each one a unique, rustic look. Given that Turkish cotton softens over time, stone washing also means these blankets arrive feeling incredibly soft. 71"x 84" 100% Turkish Cotton

**Embroidered/Lasered Patch:** \$93.76(g).

Embroidery pricing includes up to 8k stitches.

**Additional stitches:** \$0.27(g) per 1,000 stitches.

charcoal

blue

ice



## TEEMA WAFFLE WEAVE BEACH TOWEL

### **TM-TMW**

The Waffle Weave Towel is thick and warm, making it a great addition to any home as a towel or throw. Its rustic design and modern weave also make it a trendy and warm shawl or scarf for the winter. 36" x 66" 100% Turkish Cotton

**Embroidered:** \$93.76(g). Embroidery pricing includes up to 8k stitches. **Additional stitches:** \$0.27(g) per 1,000 stitches.

charcoal

honey

ice

olive

blue





**SAND  
FREE!**



**WAFFLE WEAVE BEACH TOWEL**

**MWB-12**

35" x 60", 12lb./dz, 20% polyamide/ 80% polyester.

**Pro Vision Sublimation:** No Set-Up Charges. **Imprinted:** \$112.50 (g) per color. Imprinted price includes one color. Additional run charges apply: \$0.37 (g) per color/location. **Embroidered:** \$93.76(g). Embroidery pricing includes up to 8k stitches. **Additional stitches:** \$0.27(g) per 1,000 stitches.



**LUXURY POOL TOWEL**

**PT-18**

35" x 68", 18lb./doz., 95% cotton/5% polyester, dobby twill weave & dobby hem.

**Embroidered:** \$93.76(g). Embroidery pricing includes up to 8k stitches. **Additional stitches:** \$0.27(g) per 1,000 stitches.



**LIVE IN  
LUXURY**





## ENVIROFIBR BEACH TOWEL

**ENV-14**

Made of recycled material! 38" x 65" 8lbs./dz, 100% Turkish cotton

**Imprinted:** \$112.50 (g) per color. Imprinted price includes one color. Additional run charges apply: \$0.37 (g) per color/location.



## ENVIROFIBR MESH ECO-TOTE BEACH BAG

**BB1915**

18.5" x 15" x 6". 13.5oz each. Recycled polyethylene.

**Imprinted:** \$112.50 (g) per color. Imprinted price includes one color. Additional run charges apply: \$0.37 (g) per color/location. **Embroidered:** \$93.76(g). Embroidery pricing includes up to 8k stitches. **Additional stitches:** \$0.27(g) per 1,000 stitches.



**NEW!**

## CANVAS BEACH BAG

**BB2113**

Durable, eco-friendly canvas and a roomy interior mean this bag is ready for all your seaside adventures. With its standout stripe interior and gold twist lock closure, this tote adds a touch of class to any summer outing.

**Imprinted:** \$112.50 (g) per color. Imprinted price includes one color. Additional run charges apply: \$0.37 (g) per color/location. **Embroidered:** \$93.76(g). Embroidery pricing includes up to 8k stitches. **Additional stitches:** \$0.27(g) per 1,000 stitches.





NEW!



## MAKE IT A COMBO

The Mesh Eco-Tote Beach Bag and Envirofibr Beach Towel are the perfect combo for your day at the beach! Made using recycled materials, this combo will keep you organized and dry in style!

### ENVIROFIBR BEACH TOWEL & MESH ECO-TOTE BEACH BAG

#### **BB-1915 ENV-14 COMBO**

Beach Towel: 38" x 65" 8lbs./dz, 100% Turkish cotton.



Mesh Eco-Tote Beach Bag: 18.5" x 15" x 6". 13.5oz each. Recycled polyethylene.



**Imprinted:** \$112.50 (g) per color. Imprinted price includes one color. Additional run charges apply: \$0.37 (g) per color/location. **Embroidered [Beach bag only]:** \$93.76(g). Embroidery pricing includes up to 8k stitches. **Additional stitches:** \$0.27(g) per 1,000 stitches.





pro towels

2024 COLLECTION

PRO  VISION



SUBLIMATION  
SUBLIMATION  
SUBLIMATION

ASI 79750  
PPAI 112755  
SAGE 52093  
[WWW.PROTOWELS.COM](http://WWW.PROTOWELS.COM)



# BOOST YOUR BRAND IN BRILLIANT COLOR WITH SUBLIMATION

- Soft-to-touch, photorealistic images made from soft polyester. Beach towels feature terry backing for absorbency.
- Impressive full-color products for a memorable gift or event giveaway.
- Edge-to-edge sublimation- your artwork will be showcased to the full size of the towel or blanket.
- Strikingly clear, full-color graphics with maximum visual impact



**EASY PERSONALIZATION, NO SET UPS & NO COLOR LIMITATIONS!**

**ARTWORK REQUIREMENTS:** Acceptable formats include: PSD, EPS, JPG, and PDF. Art MUST be provided at 300 DPI full scale. For best results make sure artwork is provided at full resolution. Avoid using borders or solid dark/black backgrounds. **Domestic decorating. Lead time:** 10 to 15 working days.





## RALLY TOWEL

### FOTO-18

15" x 18", 1lb./dz, hemmed, 100% polyester.

**Pro Vision Sublimation:** No Set-Up Charges. **Imprinted:** \$45.00 (g) per color. Imprinted price includes one color. Additional run charges apply: \$0.19 (g) per color/location.



## DOUBLE-FACE RALLY TOWEL

### FOTO-400

15" x 18", 1.5lb./dz, hemmed, 100% polyester. Includes full color edge-to-edge print on both sides.

**Pro Vision Sublimation:** No Set-Up Charges.



## PRO VISION PRO VISION COLORED RALLY TOWEL

### FC-18

15" x 18" 1.4 lb./doz. 100% Polyester Towel features strikingly clear full-color graphics on one side and a solid color of choice on the other side!

**Pro Vision Sublimation:** No Set-Up Charges.







## PRO VISION SPORT TOWEL

**SUB-1625**

16" x 25", 2.5lb./dz, polyester front, reverses to cotton terry back, hemmed.

**Pro Vision Sublimation:** No Set-Up Charges.

PRO VISION



## PRO VISION FITNESS TOWEL

**SUB-1144**

11" x 44", 1lb./dz, polyester front, reverses to cotton terry back, hemmed.

**Pro Vision Sublimation:** No Set-Up Charges.

PRO VISION





## **PRO VISION SMALL BEACH TOWEL**

**SUB-2242**

22" x 42", 6lb./dz, polyester front, reverses to cotton terry back, hemmed.

**Pro Vision Sublimation:** No Set-Up Charges.

PRO  VISION



## **PRO VISION BEACH TOWEL**

**SUB-11**

30" x 60", 11lb./dz, polyester front, reverses to cotton terry back, hemmed.

**Pro Vision Sublimation:** No Set-Up Charges.

PRO  VISION





## PRO VISION BEACH TOWEL

### SUB-9

28" x 58", 8.3lb./dz, polyester front, reverses to cotton terry back, hemmed.

**Pro Vision Sublimation:** No Set-Up Charges.



## PRO VISION BEACH TOWEL

### SUB-14

35" x 60", 14lb./dz, polyester front, reverses to cotton terry back, hemmed.

**Pro Vision Sublimation:** No Set-Up Charges.



## PRO VISION PLATINUM BEACH TOWEL

### SUB-17

35" x 70", 17lb./dz, polyester front, reverses to cotton terry back, hemmed.

**Pro Vision Sublimation:** No Set-Up Charges.







## PRO VISION ROUND BEACH TOWEL

### **SUB-R60**

60" diameter, 17lb./dz, polyester front, reverses to cotton terry back, hemmed, full color edge-to-edge.

**Pro Vision Sublimation:** No Set-Up Charges.



## MICROFIBER SUEDE BEACH TOWEL

### **MFS-75 WHITE**

35" x 60", 7.5lb./dz, 20% polyamide/ 80% polyester.

**Imprinted:** \$112.50 (g) per color. Imprinted price includes one color. Additional run charges apply: \$0.37 (g) per color/location.

**Embroidered:** \$93.76(g). Embroidery pricing includes up to 8k stitches. **Additional stitches:** \$0.27(g) per 1,000 stitches.







pro towels

2024 COLLECTION

STICKS &  
TOURNAMEES  
EST. 2021

ASI 79750  
PPAI 112755  
SAGE 52093  
WWW.PROTOWELS.COM

GOLF  
GOLF  
GOLF





## JEWEL COLLECTION GOLF TOWEL

### TRU17CG

11" x 17", 1lb./dz, terry velour, 100% cotton golf towel. INCLUDES corner grommet & hook.

**Imprinted:** \$45.00 (g) per color. Imprinted price includes one color. **Additional run charges apply:** \$0.19 (g) per color/location.



## JEWEL COLLECTION FINGERTIP GOLF TOWEL

### 1118CG

11" x 18", 1.5lb./dz, terry velour, twill hemmed, 100% cotton golf towel. Small heavyweight golf towel. INCLUDES corner grommet & hook.

**Imprinted:** \$45.00 (g) per color. Imprinted price includes one color. Additional run charges apply: \$0.19 (g) per color/location. **Embroidered:** \$93.76(g). Embroidery pricing includes up to 8k stitches. **Additional stitches:** \$0.27(g) per 1,000 stitches.







## JEWEL COLLECTION SOFT TOUCH GOLF TOWEL

### **TRU18CG**

15" x 18", 1.3lb./dz, terry velour, twill hemmed, 100% cotton golf towel. INCLUDES corner grommet & hook.

**Imprinted:** \$45.00 (g) per color. Imprinted price includes one color. Additional run charges apply: \$0.19 (g) per color/location.

**Embroidered:** \$93.76(g). Embroidery pricing includes up to 8k stitches. **Additional stitches:** \$0.27(g) per 1,000 stitches.



## JEWEL COLLECTION GOLF TOWEL **TRU24CG** OR **TRU24TG**

15" x 24", 2lb./dz, terry velour, hemmed, lightweight, 100% cotton golf towel. INCLUDES corner grommet & hook or tri-fold grommet & hook.

**Imprinted:** \$45.00 (g) per color. Imprinted price includes one color. Additional run charges apply: \$0.19 (g) per color/location.

**Embroidered:** \$93.76(g). Embroidery pricing includes up to 8k stitches. **Additional stitches:** \$0.27(g) per 1,000 stitches.



# MAGNA SWING



Make life easier with the revolutionary **MAGNASWING!** This ingenious magnetic towel clip effortlessly attaches your towel to golf clubs, carts and gym equipment for quick, convenient access whenever you need it. Add a Magnet to any golf towel for **\$5.00 (g)** each.





## DIAMOND COLLECTION GOLF TOWEL

### ***TRU25CG & TRU25TG***

16" x 25", 2.5lb./dz, terry velour, hemmed, midweight, 100% cotton golf towel. INCLUDES corner grommet & hook or tri-fold grommet & hook.

**Imprinted:** \$45.00 (g) per color. Imprinted price includes one color. Additional run charges apply: \$0.19 (g) per color/location.

**Embroidered:** \$93.76(g). Embroidery pricing includes up to 8k stitches. **Additional stitches:** \$0.27(g) per 1,000 stitches.



## PLATINUM COLLECTION GOLF TOWEL

### ***TRU35CG & TRU35TG***

16" x 25", 3.5lb./dz, terry velour, hemmed, heavyweight, 100% cotton golf towel. INCLUDES corner grommet & hook or tri-fold grommet & hook.

**Imprinted:** \$45.00 (g) per color. Imprinted price includes one color. Additional run charges apply: \$0.19 (g) per color/location. **Embroidered:** \$93.76(g). Embroidery pricing includes up to 8k stitches. **Additional stitches:** \$0.27(g) per 1,000 stitches.



# UPGRADE YOUR TOWEL!



Add a Grommet & Carabiner Clip to any golf towel for **\$0.50 (g)** each. **Choose from:** Brass, Silver, or Black.





## MICROFIBER WAFFLE SMALL GOLF TOWEL

### **MW-18CG**

15" x 18", 1.8lb./dz, 80% polyester/20% polyimide, microfiber waffle golf towel. INCLUDES corner grommet & hook.

**Imprinted:** \$45.00 (g) per color. Imprinted price includes one color. Additional run charges apply: \$0.19 (g) per color/location. **Embroidered:** \$93.76(g). Embroidery pricing includes up to 8k stitches. Additional stitches: \$0.27(g) per 1,000 stitches. **Pro Vision Sublimation:**\* No set-up fees.

All standard with black trim, except black comes with white trim.  
\*Sublimation available on white towels only.



## MICROFIBER WAFFLE GOLF TOWEL

### **MW-26CG & TG**

16" x 26", 3lb./dz, 80% polyester/20% polyimide, microfiber waffle golf towel. INCLUDES corner grommet & hook.

**Imprinted:** \$45.00 (g) per color. Imprinted price includes one color. Additional run charges apply: \$0.19 (g) per color/location. **Embroidered:** \$93.76(g). Embroidery pricing includes up to 8k stitches. Additional stitches: \$0.27(g) per 1,000 stitches. **Pro Vision Sublimation:**\* No set-up fees.

All standard with black trim, except black comes with white trim.  
\*Sublimation available on white towels only.



## MICROFIBER WAFFLE GOLF TOWEL

### **MW-40CG**

17" x 40", 4.8lb./dz, 80% polyester/20% polyimide, microfiber waffle golf towel. INCLUDES center grommet & hook.

**Imprinted:** \$45.00 (g) per color. Imprinted price includes one color. Additional run charges apply: \$0.19 (g) per color/location. **Embroidered:** \$93.76(g). Embroidery pricing includes up to 8k stitches. Additional stitches: \$0.27(g) per 1,000 stitches. **Pro Vision Sublimation:**\* No set-up fees.

All standard with black trim, except black comes with white trim.  
\*Sublimation available on white towels only.







## TWO-TONE HEAVYWEIGHT GOLF TOWEL

### TT-35TG

16" x 25", 3.5lb./dz, terry velour, hemmed, heavyweight, 100% cotton golf towel. Choose any TWO colors shown below. INCLUDES tri-fold grommet & hook.

**Embroidered:** \$93.76(g). Embroidery pricing includes up to 8k stitches. Additional stitches: \$0.27(g) per 1,000 stitches. List top color or towel and bottom color of towel on PO. Please specify embroidery location (top or bottom) on PO. Please add 2-4 weeks production time for all Two-Tone Golf Towel orders.



## TWO-TONE MIDWEIGHT GOLF TOWEL

### TT-25TG

16" x 25", 2.5lb./dz, terry velour, hemmed, midweight, 100% cotton golf towel. Combine any TWO colors shown below. INCLUDES tri-fold grommet & hook.

**Embroidered:** \$93.76(g). Embroidery pricing includes up to 8k stitches. Additional stitches: \$0.27(g) per 1,000 stitches.







**CUSTOM JACQUARD  
WOVEN GOLF TOWEL**

**CJW-16**

16" x 11", 2lb./dz, all terry, 100% cotton.  
Hemmed jacquard woven golf towel.  
INCLUDES corner grommet & hook.

**Lead Time:** 6-8 weeks. For shearing (velour) add  
\$.50(c) \*Three colors max per weaving line.



**CUSTOM JACQUARD  
WOVEN GOLF TOWEL**

**CJW-19**

16" x 19", 3.4lb./dz, all terry, 100% cotton.  
Hemmed jacquard woven golf towel.  
INCLUDES corner grommet & hook.

**Lead Time:** 6-8 weeks. For shearing (velour) add  
\$.50(c) \*Three colors max per weaving line.



**CUSTOM JACQUARD  
WOVEN GOLF TOWEL**

**CJW-24**

16" x 24", 4.3lb./dz, all terry, 100% cotton.  
Hemmed jacquard woven golf towel.  
INCLUDES corner grommet & hook.

**Lead Time:** 6-8 weeks. For shearing (velour) add  
\$.50(c) \*Three colors max per weaving line.



pro towels

2024 COLLECTION



FITNESS  
FITNESS  
FITNESS

ASI 79750  
PPAI 112755  
SAGE 52093  
WWW.PROTOWELS.COM





**CHILL OUT AND BE**

**XTRA  
COOL**

Just moisten, snap and cool down fast!  
Ideal for sports teams and fans, fitness  
centers, warm weather events, golf  
courses and more!

**FRIGITOWEL XTRA COOL COOLING  
TOWEL**

**CT-30 (8" x 30")**

**CT-34 (11" x 34")**

The Frigitowel Xtra Cool instant cooling towel lasts for up to 2 hours and keeps you refreshed and comfortable during even the most intense overheating. Designed to provide a frosty chill even after repeated use, this remarkable towel is made from a high-performance fabric that cools quickly when moistened with water or sweat. The lightweight cooling towel is breathable, chemical-free, and machine washable. 100% microfiber cooling towel. Simply wring out and snap the towel in the air to activate its long-lasting cooling properties.



**PROVISION**





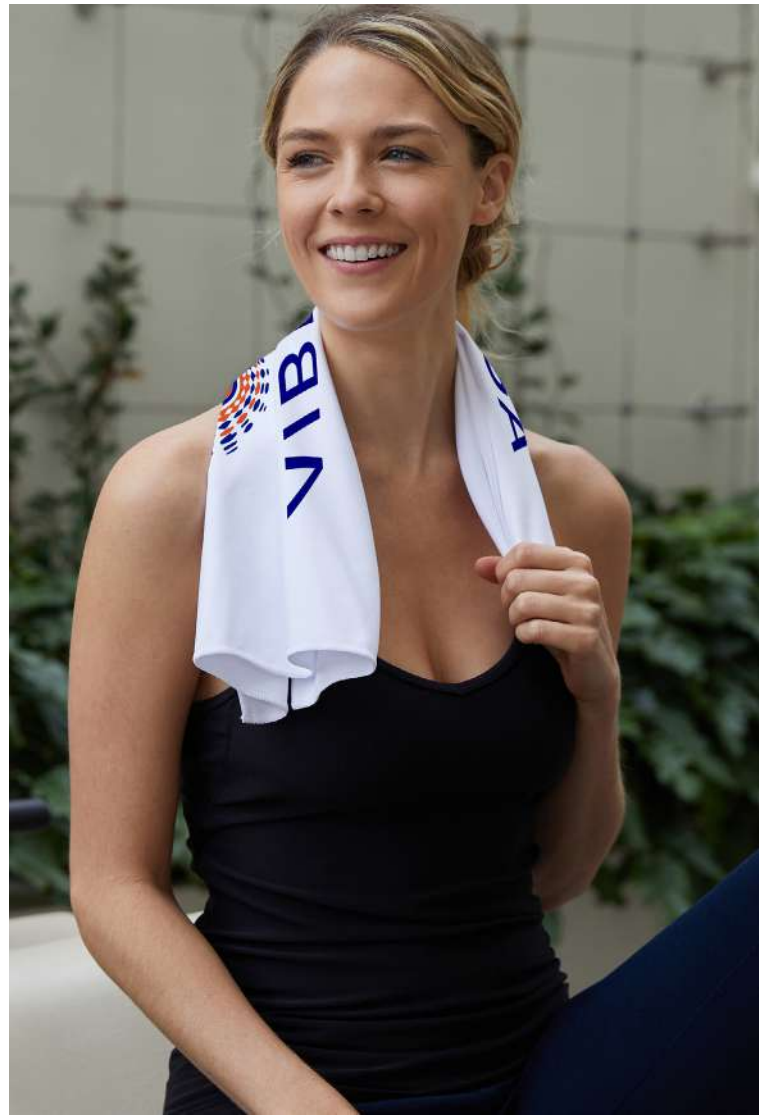
## FITNESS TOWEL

**FT-42**

12" x 42", 3.5lb./dz, terry velour, 100% cotton towel.

**Imprinted:** \$45.00 (g) per color. Imprinted price includes one color. Additional run charges apply: \$0.19 (g) per color/location.

**Embroidered:** \$93.76(g). Embroidery pricing includes up to 8k stitches. Additional stitches: \$0.27(g) per 1,000 stitches.



## WORKOUT & SPORTS TOWEL

**YW-1625**

16" x 25", 2.3lb./dz, 88% polyester/12% polyamide.

**Imprinted:** \$45.00 (g) per color. Imprinted price includes one color. Additional run charges apply: \$0.19 (g) per color/location.



WORK IT  
OUT





## PROMOTIONAL RALLY TOWEL

### TRU-17

11" x 17", 1lb./dz, terry velour, hemmed, 100% cotton rally towel.

**Imprinted:** \$45.00 (g) per color. Imprinted price includes one color. Additional run charges apply: \$0.19 (g) per color/location.



## VELOUR FINGERTIP SPORT TOWEL

### 1118DE

11" x 18", 1.5lb./dz, terry velour, twill hemmed, 100% cotton sport towel. Small heavyweight sport towel.

**Imprinted:** \$45.00 (g) per color. Imprinted price includes one color. Additional run charges apply: \$0.19 (g) per color/location. **Embroidered:** \$93.76(g). Embroidery pricing includes up to 8k stitches. **Additional stitches:** \$0.27(g) per 1,000 stitches.



## JEWEL COLLECTION SOFT TOUCH SPORT/STADIUM TOWEL

### TRU-18

15" x 18", 1.3lb./dz, terry velour, twill hemmed, 100% cotton rally towel.

**Imprinted:** \$45.00 (g) per color. Imprinted price includes one color. Additional run charges apply: \$0.19 (g) per color/location. **Embroidered:** \$93.76(g). Embroidery pricing includes up to 8k stitches. **Additional stitches:** \$0.27(g) per 1,000 stitches.







## JEWEL COLLECTION SPORT TOWEL

### TRU24

15" x 24", 2lb./dz, terry velour, hemmed, lightweight, 100% cotton sport towel.

**Imprinted:** \$45.00 (g) per color. Imprinted price includes one color. Additional run charges apply: \$0.19 (g) per color/location. **Embroidered:** \$93.76(g). Embroidery pricing includes up to 8k stitches. **Additional stitches:** \$0.27(g) per 1,000 stitches.



## MICROFIBER CUSTOM YOGA TOWEL

### YT-2670

26" x 70", microfiber: 80% polyester/ 20% polyamide. Corner pockets made into it for a better fit around your yoga mat.

**Imprinted:** \$112.50 (g) per color. Imprinted price includes one color. Additional run charges apply: \$0.37 (g) per color/location. **Embroidered:** \$93.76(g). Embroidery pricing includes up to 8k stitches. **Additional stitches:** \$0.27(g) per 1,000 stitches.





## DIAMOND COLLECTION SPORT TOWEL

### TRU-25

16" x 25", 2.5lb./dz, terry velour, hemmed, midweight, 100% cotton sport towel.

**Imprinted:** \$45.00 (g) per color. Imprinted price includes one color. Additional run charges apply: \$0.19 (g) per color/location. **Embroidered:** \$93.76(g). Embroidery pricing includes up to 8k stitches. **Additional stitches:** \$0.27(g) per 1,000 stitches.



## PLATINUM COLLECTION SPORT TOWEL

### TRU-35

16" x 25", 3.5lb./dz, terry velour, hemmed, heavyweight, 100% cotton sport towel.

**Imprinted:** \$45.00 (g) per color. Imprinted price includes one color. Additional run charges apply: \$0.19 (g) per color/location. **Embroidered:** \$93.76(g). Embroidery pricing includes up to 8k stitches. **Additional stitches:** \$0.27(g) per 1,000 stitches.







**STOCK DESIGN**  
**SPORTS**  
**BALL**  
**COLLECTION**

**FIBER REACTIVE TOWEL**

**FRTB-20 (TENNIS BALL)**

**FRBK-20 (BASKETBALL)**

**FRGB-20 (GOLF BALL)**

**FRSB-20 (SOCCER BALL)**

20" X 20", 2lb./dz, 100% cotton velour. Add your logo to our fiber reactive sport ball stock designs.

**Imprinted:** \$45.00 (g) per color. Imprinted price includes one color.  
**Additional run charges apply:** \$0.19 (g) per color/location.





pro towels

2024 COLLECTION



  
WANDERLINE  
OUTDOOR ADVENTURES

BLANKETS  
BLANKETS  
BLANKETS

ASI 79750  
PPAI 112755  
SAGE 52093  
WWW.PROTOWELS.COM





## WANDERLUST BLANKET

### WLB-5060

The Wanderlust offers a unique style and feel. It's low pile and great for on the go. Comes in neutral colors and the plush provides maximum comfort without being big and bulky. 50" x 60", 100% polyester, fully hemmed with subtle texture. Polybag included.

**Embroidered/Lasered Patch:** \$93.76(g).

Embroidery pricing includes up to 8k stitches.

**Additional stitches:** \$0.27(g) per 1,000 stitches.



## ALIEHS CROCHET KNIT THROW

### AKT-5060

For more than 30 years, Sheila was a shining light at Pro Towels. If you have called in or worked with us before, you've inevitably been the benefactor of her professionalism, friendliness, and overall light she brought to everything she did. This new product is soft, high quality, and represents our company well. In short, it's amazing – just like Sheila was. In tribute to the superstar that she was, we've named this blanket after her. The Aliehs (Sheila spelled backwards) and is sure to be loved by your clients while also promoting their brand message in a unique and tasteful way. 50" x 60", 100% polyester, knitted throw with ribbed edging. Vinyl zipper bag included.

**Embroidered/Lasered Patch:** \$93.76(g).

Embroidery pricing includes up to 8k stitches.

**Additional stitches:** \$0.27(g) per 1,000 stitches.







## CLOUD NINE SOFT THROW

### **CNST-6070**

This oversized blanket can be described in two words: unmatched softness. The Cloud Nine Throw has a heavenly feel to it. Buttery soft and incomparably luxurious. It's available in popular colors and makes an incredible gift. 60" x 70", 100% polyester. Vinyl zipper bag included.

**Embroidered/Lasered Patch:** \$93.76(g). Embroidery pricing includes up to 8k stitches. **Additional stitches:** \$0.27(g) per 1,000 stitches.



## RURAL LLAMA THROW

### **RLT-5060**

Llama mia, here we go again! Experiencing cold and looking for a way to stay warm? No problama. The ultimate in soft, engulf yourself in what is about to become your favorite blanket 50" x 60", 100% polyester, micro fur reverses to a lush faux llama fur. Vinyl zipper bag included.

**Embroidered/Lasered Patch:** \$93.76(g). Embroidery pricing includes up to 8k stitches. **Additional stitches:** \$0.27(g) per 1,000 stitches.







## RIVIERA THROW ENVIROFIBR

### **RVT-5060**

Save the planet and wrap yourself in softness with our EnviroFibr 100% Recycled blankets. The Riviera is crocheted, made from 100% recycled Poly EnviroFibr. These throws prove that you don't have to sacrifice quality, comfort, or aesthetics to go eco. 50" x 60", 100% recycled polyester throw. Two gorgeous knit textures. Vinyl zipper bag included.

**Embroidered/Lasered Patch:** \$93.76(g).  
Embroidery pricing includes up to 8k stitches.  
**Additional stitches:** \$0.27(g) per 1,000 stitches.

ivory



## EARTHLY COMFORT THROW ENVIROFIBR

### **ECT-5060**

Save the planet and wrap yourself in softness with our EnviroFibr 100% Recycled blankets. The Earthly Comfort Throw is a made from Recycled Polyester. Stylish, on-trend, and available in popular colors, these throws prove that you don't have to sacrifice quality, comfort, or esthetics to go eco. 50" x 60", 100% recycled polyester throw featuring a fringed edge. Vinyl zipper bag included.

**Embroidered/Lasered Patch:** \$93.76(g).  
Embroidery pricing includes up to 8k stitches.  
**Additional stitches:** \$0.27(g) per 1,000 stitches.

gray





## FOUR SEASONS STRIPED BLANKET

### FSSB-5060

The Four Seasons blanket is a lightweight throw that's perfect for, well – all four seasons! This stylish blanket features a tasseled edge with wide stripes. This style can be kept on a couch for chair for quick cover, or in the car for an impromptu picnic. It's as chic as it is versatile! 50" x 60", 100% polyester throw featuring a tasseled edge. Vinyl zipper bag included.

**Embroidered/Lasered Patch:** \$93.76(g). Embroidery pricing includes up to 8k stitches. **Additional stitches:** \$0.27(g) per 1,000 stitches.

charcoal  
gray



## OPULENCE THROW

### OPT-5060

Like its name would suggest, the Opulence throw is sumptuous, providing a level of cozy that is unmatched. This buttery soft blanket is 50x60, comes in a beautiful vanilla color. 50" x 60", 100% polyester throw. Plush, high-pile faux fur. Vinyl zipper bag included.

**Embroidered/Lasered Patch:** \$93.76(g). Embroidery pricing includes up to 8k stitches. **Additional stitches:** \$0.27(g) per 1,000 stitches.

ivory

STAY  
COZY





## CHALLENGER LAMBSWOOL THROW CH-5060

Colored on one side, pillowy soft sherpa on the other. The Challenger blanket will engulf you in sheer comfort. Our screenprinted Challenger! 50" x 60". Faux micro fur/faux lambswool, 100% polyester. Vinyl zipper bag included.

**Imprinted:** \$45.00 (g). Imprinted price includes one color.



## PALMETTO CHALLENGER LAMBSWOOL THROW CHPM-5060

Colored on one side, pillowy soft sherpa on the other. The Palmetto Challenger blanket will engulf you in sheer comfort. More plush than our previous Challenger! 50" x 60". Faux micro fur/faux lambswool, 100% polyester. Zipper bag included.

**Embroidered/Lasered Patch:** \$93.76(g).  
Embroidery pricing includes up to 8k stitches.  
**Additional stitches:** \$0.27(g) per 1,000 stitches.



## BUFFALO CHECK CHALLENGER LAMBSWOOL THROW BCH-5060

We've taken our best-selling lambswool blanket and combined it with the popular buffalo check patterns. This sherpa blanket is perfect to snuggle up to and add warmth and comfort to any home. 50" x 60". Faux micro checkered pattern fur/faux lambswool, 100% polyester.

**Embroidered/Lasered Patch:** \$93.76(g).  
Embroidery pricing includes up to 8k stitches.  
**Additional stitches:** \$0.27(g) per 1,000 stitches.







## ELYSIAN THROW BLANKET

### ELYT-5060

A pure delight. The Elysian Throw is lightweight and ultra soft. Definitely a keep-out-for-use throw, this neutral color piece has universal application and is something the recipient can have on display and use all year long. Pure comfort! 50" x 60", 100% polyester, anti-pile, hemmed, hook and loop ribbon and polybag included.

**Embroidered/Lasered Patch:** \$93.76(g).  
Embroidery pricing includes up to 8k stitches.  
**Additional stitches:** \$0.27(g) per 1,000 stitches.

gray



## SHETLANDER SHERPA SLS-5060

Cozy and reversible. Made from 100% poly and machine washable. The Shetland Sherpa blanket is a nice mid-weight blanket available in universally loved colors making it great for brand application. 50" x 60", 100% polyester throw. Merrow stitch finish. Hook and loop ribbon with decorative card insert.

**Embroidered/Lasered Patch:** \$93.76(g).  
Embroidery pricing includes up to 8k stitches.  
**Additional stitches:** \$0.27(g) per 1,000 stitches.

black

navy

cream

red

gray





## LADEN COMFORT THROW

### LCT-5060

The Laden Throw is a plush blanket that will surround you in comfort. This plush 50" x 60" blanket features a finished edge and is available in several rich colors. 50" x 60", 100% polyester throw. Self hem finish. Vinyl zipper bag included.

**Embroidered/Lasered Patch:** \$93.76(g).  
Embroidery pricing includes up to 8k stitches.  
**Additional stitches:** \$0.27(g) per 1,000 stitches.



## LADEN COMFORT THROW OVERSIZED

### LCT-OS-6072

The larger version of our popular Laden Throw, this plush style is great for cozying up on the couch during a movie or front porch sitting in the crisp fall air. 60" x 72", 100% polyester. Oversized throw. Self hem finish. Vinyl zipper bag included.

**Embroidered/Lasered Patch:** \$93.76(g).  
Embroidery pricing includes up to 8k stitches.  
**Additional stitches:** \$0.27(g) per 1,000 stitches.







## FIRESIDE PLAID THROW

### FSPD-5060

Whether you are hitting the slopes or cozing up in front of the fire on a cold winter's day, this blanket is everything you need. Unique plaid design mimics high-fashion, and features a finished edge. 50" x 60", 100% polyester throw. Hemmed edge. Low pile.

**Embroidered/Lasered Patch:** \$93.76(g). Embroidery pricing includes up to 8k stitches. **Additional stitches:** \$0.27(g) per 1,000 stitches.



## HIGHLAND PLAID THROW

### HLPD-5060

Whether you are hitting the slopes or cozing up in front of the fire on a cold winter's day, this blanket is everything you need. Unique plaid design mimics high fashion. 50" x 60", 100% polyester throw. Hemmed edge. Low pile. Polybag included.

**Embroidered/Lasered Patch:** \$93.76(g). Embroidery pricing includes up to 8k stitches. **Additional stitches:** \$0.27(g) per 1,000 stitches.





## PROMO FLEECE BLANKET

### PROMOFL

Our soft, lightweight fleece throw is a solid entry-level blanket. It's available in several popular colors and is the perfect everyday blanket. 50" x 60" 100% polyester fleece blanket. Anti-pilling fleece.

**Embroidered/Lasered Patch:** \$93.76(g).  
Embroidery pricing includes up to 8k stitches.  
**Additional stitches:** \$0.27(g) per 1,000 stitches.



## MICRO PLUSH CORAL BLANKET

### MC5060

The blanket that keeps things feeling neat and tidy. With its tricot binding, this blanket draws you in and cozies you up for that Sunday afternoon nap. 50" x 60" 100% polyester. Matching tricot binding with an anti-pill finish.

**Embroidered/Lasered Patch:** \$93.76(g).  
Embroidery pricing includes up to 8k stitches.  
**Additional stitches:** \$0.27(g) per 1,000 stitches.



## LUXFUR BLANKET

### LUXFUR-5060

This luxurious high-pile faux fur blanket is unmatched in luxury and softness. Perfect as both a high-end décor piece, and an oh-so warm throw blanket to cuddle up with on the couch. 50" x 60", faux fur. Trimmed with a concealed zipper hem in corner with a high-pile finish.

**Embroidered/Lasered Patch:** \$93.76(g).  
Embroidery pricing includes up to 8k stitches.  
**Additional stitches:** \$0.27(g) per 1,000 stitches.







## SWEATSHIRT BLANKET

### **SB**

This versatile blanket is perfect for watching the game in the stadium, or at home wrapped up in front of the TV. Ideal for throwing on a bed, at home or in the dorm. 50" x 60". 50% cotton/ 50% polyester, self-hemmed blanket.

**Imprinted:** \$1120 (g) per color. Imprinted price includes one color. **Additional run charges apply:** \$0.19 (g) per color/location. **Embroidered:** \$93.76(g). Embroidery pricing includes up to 8k stitches. **Additional stitches:** \$0.27(g) per 1,000 stitches.



## OVERSIZED SWEATSHIRT BLANKET

### **SB-OS**

This blanket combines the best of both worlds: the comfort of brushed cotton on one side, and a silk-screenable cotton/ poly on the other side on which to proudly present your image. 58" x 84". 50% cotton/ 50% polyester, self-hemmed blanket. Perfect for two!

**Imprinted:** \$1120 (g) per color. Imprinted price includes one color. **Additional run charges apply:** \$0.19 (g) per color/location. **Embroidered:** \$93.76(g). Embroidery pricing includes up to 8k stitches. **Additional stitches:** \$0.27(g) per 1,000 stitches.



## SWEATSHIRT SPORT HOODIE

### **SB-HOODIE**

We have taken our favorite sweatshirt blanket and transformed it into the ultimate game day accessory that you can now wear and wrap up in. One button at the neckline for easy on and off, plus a convenient hood to help cover you up. 50" x 60", 50% cotton/50% polyester.

**Imprinted:** \$1120 (g) per color. Imprinted price includes one color. **Additional run charges apply:** \$0.19 (g) per color/location. **Embroidered:** \$93.76(g). Embroidery pricing includes up to 8k stitches. **Additional stitches:** \$0.27(g) per 1,000 stitches.







## **WATERPROOF SHERPA**

### **WPS-5056**

Meet your new take-it-anywhere blanket. Rain and snow are no match for this waterproof sherpa blanket, making it perfect for wrapping yourself in warmth during even the coldest weather. Warm sherpa meets waterproof. 50" x 56", water resistant, portable. Rolled into an included matching bag with carry strap.

**Embroidered/Lasered Patch:** \$93.76(g).

Embroidery pricing includes up to 8k stitches.

**Additional stitches:** \$0.27(g) per 1,000 stitches.

black

navy



## **TRAVELER BLANKET**

### **TVB-5057**

A unique style that is perfect for people on the go! The traveler is a sand-resistant blanket. The built-in zipper on this functional style allows you to fold the blanket into itself and keeps it self-contained when not in use. 50" x 57", water resistant polyester woven backing, reverses to 100% polyester fleece. Polybag included.

**Embroidered/Lasered Patch:** \$93.76(g).

Embroidery pricing includes up to 8k stitches.

**Additional stitches:** \$0.27(g) per 1,000 stitches.

black

navy

gray





## LOFTHOUSE CAMPING BLANKET

### LCB-4856

The Lofthouse is a one-of-a-kind camping blanket with piped edges. It's stylish and on-trend, plus it's lightweight and easy to pack and carry so you can take it anywhere! 48" x 56", water resistant, portable and lightweight. Comes with a convenient clip for wearing. Rolled into an included matching bag.

**Embroidered:** \$93.76(g). Embroidery pricing includes up to 8k stitches. **Additional stitches:** \$0.27(g) per 1,000 stitches.

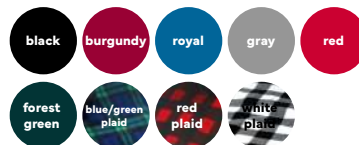


## PICNIC BLANKET

### PIC-5060

Soft and comfortable fleece on one side and waterproof polyester shell on the other. The perfect travel companion or car blanket for all weather conditions. Its easy-to-carry design unfolds into a full-size 50" x 60" picnic blanket. 100% polyester. Plush microfiber polyester front reverses to water repellent polyester back. Includes self-carrying case.

**Embroidered:** \$93.76(g). Embroidery pricing includes up to 8k stitches. **Additional stitches:** \$0.27(g) per 1,000 stitches.







## PRO VISION CHALLENGER LAMBSWOOL THROW

### **FOTO-CH**

Luxurious yet affordable, our Challenger Lambswool Throw has a sherpa side to keep you warm and is one of our most popular throws. And now designed to offer full color, edge to edge printing to re-create photorealistic images. Available in three sizes: 30" x 40", 50" x 60", 60" x 80". soft, plush throw. 100% polyester. Self hem. Edge-to-edge sublimation.

**Pro Vision Sublimation:** No Set-Up Charges.

PRO VISION



## PRO VISION FLEECE THROW

### **FOTO-FL**

The unbelievable softness of this plush throw combined with full color, edge to edge graphics creates a stunning gift that enhances any brand or event. Available in three sizes: 30" x 40", 50" x 60", 60" x 80". 100% polyester. Self hemmed. Edge-to-edge color.

**Pro Vision Sublimation:** No Set-Up Charges.

PRO VISION



## PRO VISION PLUSH THROW

### **FOTO-PLUSH**

The unbelievable softness of this plush throw combined with full color, edge to edge graphics creates a stunning gift that enhances any brand or event. The ultra-soft Plush will make this blanket ideal to snuggle and cuddle up with. Available in three sizes: 30" x 40", 50" x 60", 60" x 80". soft, plush throw. 100% polyester. Self hem. Edge-to-edge sublimation.

**Pro Vision Sublimation:** No Set-Up Charges.

PRO VISION





## TAPESTRY CUSTOM WOVEN THROW

### TAP

This classic but stylish, 100% cotton throw is perfect to drape over a couch or chair, offering a touch of color to any room. Show off your image on this beautiful accessory. It's an ideal gift to remember a graduation or to commemorate a company milestone. 100% cotton. Made in USA. Only 25 piece minimum with standard colors.

No set-up charge for orders 25+ pieces.; 12-24pcs. Add \$62.50 (g) to order. **Lead Time:** Approx. 4 weeks after receipt of P.O., artwork approval, and approval of pre-production sample.



## 2 LAYER CUSTOM WOVEN THROW

### TH-20

Perfect for throwing over the couch for decoration or snuggling underneath, this stylish 2-layer custom woven throw features up to three colors in your design. 100% cotton. Made in USA. Only 25 piece minimum with standard colors.

No set-up charge for orders 25+ pieces.; 12-24pcs. Add \$62.50 (g) to order. **Lead Time:** Approx. 4 weeks after receipt of P.O., artwork approval, and approval of pre-production sample.



## 2.5 LAYER CUSTOM WOVEN THROW

### TH-25

Perfect for throwing over the couch for decoration or snuggling underneath, this stylish 2.5 layer custom woven throw features up to three colors in your design. 100% cotton. Made in USA. Only 25 piece minimum with standard colors.

No set-up charge for orders 25+ pieces.; 12-24pcs. Add \$62.50 (g) to order. **Lead Time:** Approx. 4 weeks after receipt of P.O., artwork approval, and approval of pre-production sample.





pro towels  
2024 COLLECTION

Grey  
Vine  
Vineyards



ASI 79750  
PPAI 112755  
SAGE 52093  
WWW.PROTOWELS.COM

LIFESTYLE  
LIFESTYLE  
LIFESTYLE





## KEEPSAKE TEA TOWEL

### TEA-1826

18" x 26", 1.7lb./dz, flat woven, hemmed, lint-free, 100% cotton tea towel.

**Imprinted:** \$45.00 (g) per color. Imprinted price includes one color. **Additional run charges apply:** \$0.19 (g) per color/location.

**Embroidered:** \$93.76(g). Embroidery pricing includes up to 8k stitches. Additional stitches: \$0.27(g) per 1,000 stitches.



## PROVISION TEA TOWEL

### SUB-T1626

The sublimated design provides edge to edge full-color graphics that will grab your client's attention. 16" x 26", 100% polyester, hemmed. Full color edge-to-edge.

**Pro Vision Sublimation:** No Set-Up Charges.

**PROVISION**





## TEA TOWELS FROM

# FLOUR SACKS

Dry dishes and cutlery, lay over rising dough, keep food warm, store greens wrapped in a flour sack towel, in a ziplock bag to keep them crisp, wear the 28" x 29" size as an apron, line your bread basket, dusting, and SO many more uses!

## FLOUR SACK TEA TOWELS

**TEA-FS1822 (18" x 22")**

**TEA-1828L (18" x 28")**

**TEA-FS2020H (Heavy Weight 20" x 20")**

**TEA-FS2829 (28" x 29")**

**TEA-FS2829H (Heavy Weight 28" x 29")**

Pre-washed, lint free tea towels that work great as a delicate napkin or as an absorbent clean-up cloth.  
98% Cotton/ 2% Polyester

**Imprinted:** \$45.00 (g) per color. Imprinted price includes one color. Additional run charges apply: \$0.19 (g) per color/location.  
**Embroidered:** \$93.76(g). Embroidery pricing includes up to 8k stitches. **Additional stitches:** \$0.27(g) per 1,000 stitches. Piece Processed (not perfectly uniform sizes: 1-2 inch variability)





## SEVILLE COLLECTION WAFFLE WEAVE ROBE

### WWR52

52" Length, 100% cotton. One Size Fits Most. Full length sleeves and shawl collar.

**Embroidered:** \$93.76(g). Embroidery pricing includes up to 8k stitches. **Additional stitches:** \$0.27(g) per 1,000 stitches.



## LUXURY ROBE

### LR-48

48" length, 100% polyester. One Size Fits Most. Full length shawl collar, 2 front pockets, and matching belt.

**Embroidered:** \$93.76(g). Embroidery pricing includes up to 8k stitches. **Additional stitches:** \$0.27(g) per 1,000 stitches.







## FULL BATH TOWEL SET

### **BCMIASMA**

100% miasma cotton terry bath towel set. Set Includes: 30" x 56" 100% miasma cotton terry bath towel [16.7lb./dz], 100% miasma cotton terry hand towel [16" x 28", 4lb./dz] and 100% miasma cotton terry wash towel [13" x 13", 1.75 lb./dz].

**Embroidered:** \$93.76(g). Embroidery pricing includes up to 8k stitches. **Additional stitches:** \$0.27(g) per 1,000 stitches.

\*Items can be ordered separately. Contact us for pricing.



**\*RIBBON IS THE PERFECT ADDITION TO OUR BATH SET GIFT!**

THE  
PERFECT  
SET





**NEW!**

## **SUBLIMATED BELT BAG**

### **SUB-WP75**

Free your hands and keep your essentials close with this sublimated belt bag! This belt bag is perfect for keeping your must-have items within reach without the hassle of carrying a purse or backpack. The sublimated print gives this accessory a fun, eye-catching look that expresses your personal flair. Wear it around your waist or across your chest for easy access to your phone, cash, cards and more while on the go. With multiple carrying options and pockets, this belt bag simplifies your life by allowing you to go hands-free in style.

PROVISION



**NEW!**

## **SUBLIMATED CINCH SACK**

### **SUB-CS1613**

Carry your possessions in trendsetting style with the Sublimated Cinch Sack. This spacious cinch bag and its sublimated print expresses your unique flair. Show the world who you are through stylish accessories! Built from durable polyester, it withstands daily use while providing customizable access. Carry your essentials in fashion-forward style with this spacious printed cinch sack!

PROVISION



**NEW!**

## **SUBLIMATED BUCKET HAT**

### **SUB-BH10**

Stand out from the crowd in this stylish sublimated bucket hat that makes a bold fashion statement! With its vibrant, customized full print design, this hat is guaranteed to get you noticed. The lightweight polyester material keeps your head cool and comfortable, while the wide brim provides shade from the sun.

PROVISION





## **SUBLIMATED SWIM TRUNKS**

### **SUB-ST**

Make a splash in our sublimated swim trunks, featuring patterns and designs infused directly into the fabric for vivid color that won't fade over time. Sublimation printing ensures the unique art and graphics on these swim trunks will look as bright and bold years from now as they do today. The lightweight, flexible fabric offers unrestricted mobility whether you're swimming, beachcombing, or playing volleyball.

PROVISION



## **MEN'S CABANA SET**

### **SUB-MCS**

Escape to paradise in comfort with the Mens Cabana Set. This stylish set includes a short sleeve polo shirt and shorts featuring an all over sublimated print. With its relaxed fit, this cabana set offers the comfort you need for all occasions.

PROVISION



# MAKE A SPLASH AND DOODLE BEACHSIDE

## WITH COLOR SPLASH

Create your own beachside masterpieces! With 4 towel options, Color Splash is perfect for adults of all ages who want to tap into their creativity through the simple joy of coloring. Give the gift of color to uplift someone's mood or inspire a child's creativity. With Color Splash, you'll put inspiration at their fingertips, making time fly by in a flourish of color. The beautiful and intricate designs will help you focus, relax, and express yourself through color. Rediscover the fun of coloring!



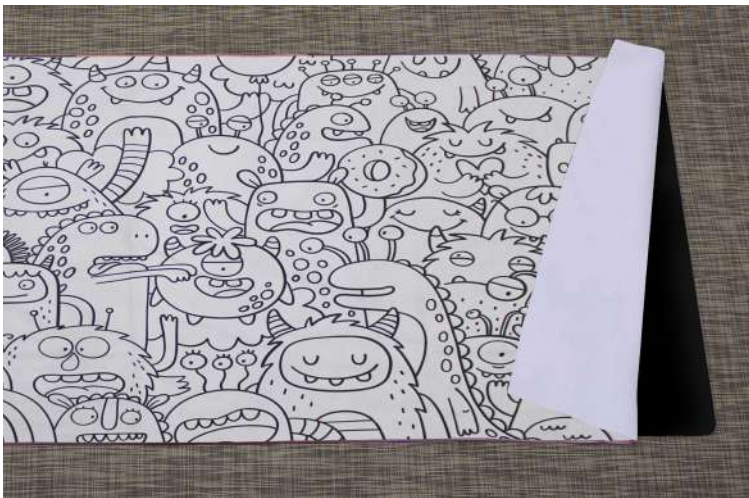
### MICROSUEDE BEACH TOWEL

**MFS-75** PROVISION

Sign your towel! Print your logo, and then have your team or event sign for the perfect memorabilia. 35" x 60", 12.0lb./doz., 80% polyester/ 20% polyamide. **Pro Vision Sublimation:** No Set-Up Charges. **Imprinted:** \$112.50 (g) per color. Imprinted price includes one color. **Additional run charges apply:** \$0.37 (g) per color/location.

### FITNESS TOWEL **YT-1625** PROVISION

16" x 25", 88% polyester/12% polyamide, 2.3 lbs/dz. Ultra lightweight with a suede-softness feel. **Pro Vision Sublimation:** No Set-Up Charges. **Imprinted:** \$112.50 (g) per color. Imprinted price includes one color. **Additional run charges apply:** \$0.37 (g) per color/location.



### YOGA MAT TOWEL **YT-2670** PROVISION

26" x 70", microfiber: 80% polyester/ 20% polyamide. **Pro Vision Sublimation:** No Set-Up Charges. **Imprinted:** \$112.50 (g) per color. Imprinted price includes one color. **Additional run charges apply:** \$0.37 (g) per color/location.

### KEEPSAKE TEA TOWEL

**TEA-1826**  
18" x 26", 1.7lb./dz, flat woven, hemmed, lint-free, 100% cotton tea towel. **Imprinted:** \$112.50 (g) per color. Imprinted price includes one color. **Additional run charges apply:** \$0.37 (g) per color/location.



PERSONALIZE WITH

# Signature PRINTING

The Signature Printing Option isn't just for a graduating class! Creating a personalized item adds even more value by making it a sentimental keepsake. Not just for schools and athletic teams, the signature printing option is a great way to commemorate co-workers, friends and family! Great for wedding parties, family reunions, corporate retreats, special events, themed races and more!



**HOW TO SUBMIT SIGNATURES:** \$40.00 net art charge applies

1. Names should be signed with a black felt tip marker ONLY on an 8.5" x 11" piece of unlined white paper
2. Provide as many names on one sheet as you can in a random fashion (like you would see in a yearbook), without the names touching.
3. If provided electronically, the same requirements above would apply, except in place of sheets of paper you will have files (.pdf, .jpg, .eps).
4. The Signature Printing Option is available on most printable items.

See standard imprinting and setup charges per item and add flat art charge.



# DECORATING CAPABILITIES

Not every customer wants the same old decoration in the same old location. Superior's expertise in retail trends, such as mixed media techniques can create a fashion-forward program that includes a variety of products.





# DECORATION TECHNIQUES



**SUBLIMATION**



**LASER PATCH**



**SCREENPRINT**



**EMBLEM**



**EMBROIDERY**





# DECORATING INFORMATION

## IMPRINTING

**LEAD TIME:** 5-7 working days after art approval.

**MINIMUM ORDER:** Minimums vary by product.

**PMS COLOR MATCHING CHARGES:** We will match color as close as possible at no extra charge.

**SET UP CHARGES:** Item 11" x 42" or smaller-\$45.00(g) per color; Items 24" x 42" or larger-\$112.50(g) per imprint color.

**RUNNING CHARGES:** Each additional color/location: Items 11" x 42" or smaller-\$0.19(g) per imprint color; Items 24" x 42" or larger-\$0.37(g) per imprint color.

**ART CHARGES:** Billed per hour-\$40.00(k) minimum.

**ADDITIONAL INFO. & CHARGES:** Metallic ink is not recommended

## SIGNATURE PRINTING

**SET-UP CHARGE:** \$50.00(g). Up to 200 names included in set up charge. Over 200 names. May incur an additional fee.

**COLOR CHANGE CHARGE:** \$25.00 (k)

**SPECULATIVE SAMPLE CHARGE:** \$50% OFF EQP cost for item plus full set up fees. If the spec sample generates an order, no additional setup charges will apply.

## SUBLIMATION

**LEAD TIME:** Production: 10-15 working days after artwork approval.

**MINIMUM ORDER:** 1-piece, SUB-17. SET UP CHARGES: NO set up charges.

**MAXIMUM NUMBER OF IMPRINT COLORS:** Unlimited.

**ARTWORK:** Acceptable formats include PSD, EPS, JPG and PDF. Art MUST be provided at 300 DPI full scale, (Example: Artwork for SUB-1518 MUST be 14.5" x 1 8" at 300 DPI). *\*For the best possible results make sure artwork is provided at high resolution. Avoid using borders or solid dark/black backgrounds.*

**COLOR MATCHING CHARGES:** We will attempt to match your PMS color request as best as we can, but we cannot guarantee a 100% match.

**ART CHARGES:** Billed per hour-\$40.00(k) minimum.

**SPECULATIVE SAMPLE CHARGE:** 50% off EQP cost for item.

## 4 COLOR PROCESS

**LEAD TIME:** 3-4 weeks after artwork approval

**MINIMUM ORDER:** 600 pieces golf & sport towels; 300 pieces beach towels

**MAXIMUM NUMBER OF IMPRINT COLORS:** 4 process colors required. 1 or 2 additional spot colors required in some cases.

**SET UP CHARGES:** Items 11" x 42" or smaller-\$45.00(g) per imprint color; Items 24" x 42" or larger-\$112.50(g) per imprint color; Submit artwork for consideration, review and quoting.

**ART CHARGES:** Submit artwork for consideration, review and quoting. Art and Film Preparation Fee-\$400.00(k).

**SPECULATIVE SAMPLE CHARGES:** 50% off EQP cost for item + full set up. If the spec sample generates an order, no additional setup charges will apply.

**PRE-PRODUCTION SAMPLE CHARGE:** Required for all orders: \$40.00(k).

## FIBER REACTIVE

**LEAD TIME:** 60-90 working days after receipt of P.O. and approved sample.

**MINIMUM ORDER:** Beach Towels - 600 pcs; Golf / spot Towels (16" x 25") - 2,500 pcs; Rally towels (15" x 18") - 5,000 pcs.

**MAXIMUM NUMBER OF IMPRINT COLORS:** Up to 9 colors. Based on complexity of art.

**COLOR MATCHING CHARGES:** No charge. Exact color match is not guaranteed.

**ART CHARGES:** Billed per hour-\$40.00(k) minimum.

**TERMS:** 50% deposit required for all fiber reactive orders.

## JACQUARD

**LEAD TIME:** 6 - 8 weeks after artwork and credit approval

**MINIMUM ORDER:** Minimums vary by product.

**MAXIMUM NUMBER OF IMPRINT COLORS:** Submit artwork for review.

**COLOR MATCHING CHARGES:** Contact Proservice for available colors

**ART CHARGES:** Billed per hour-\$40.00(k) minimum.

**ADDITIONAL INFO. AND CHARGES:** 15% Over/under applies.

**PRE-PRODUCTION SAMPLES:** Will be supplied with colors running on machine. No charge: a shipper number is required.

**SPECULATIVE SAMPLE CHARGE:** \$62.50(g) utilizing colors currently on loom; for exact colors.

## EMBROIDERY

**LEAD TIME:** 5-10 working days.

**MINIMUM ORDER:** Minimums vary by product.

**MAXIMUM NUMBER OF THREAD COLORS:** 12 color maximum on all quantities.

**COLOR MATCHING CHARGES:** Pro Towels will match color as closely as possible with available threads. If a specific thread is required, please call for details.

**SET UP & DIGITIZING CHARGES:** Digitizing Fee-\$93.760; Editing Fee-\$31.25(g) per edit; Customer supplied files may require additional editing.

**REORDERS:** If DST file is provided, no set up charge on reorder Pro Towels is not liable if the DST file provided does not meet the requirements to embroider on our products.

**RUNNING CHARGES:** Catalog pricing includes up to 8,000 stitches.

**ADDITIONAL INFO. AND CHARGES:** Additional Stitches-\$0.27(g) per additional 1,000 stitches above the first 8,000. Metallic Surcharge -\$0.16(g) per 1,000 stitches. Embroidery Thread Color Charge: \$31.25(g) per thread color change, unless changes to black or white. Second location: \$3.75(g) each additional location.

**SPECULATIVE SAMPLE CHARGE:** 50% OFF EQP cost for item plus full set up fees. If the spec sample generates an order, no additional setup charges will apply.

**PERSONALIZATION:** Add \$3.75(g) to each embroidered price of any item

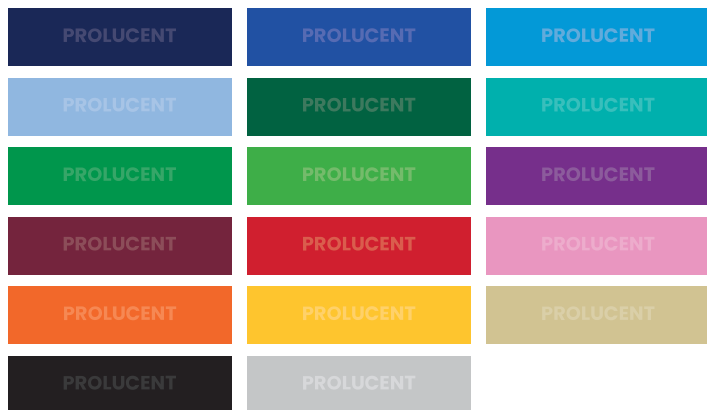


# IMPRINTING OPTIONS FOR BEACH TOWELS

All of our beach towels are printed with water based inks. These inks have a certain level of transparency and all color inks do not print on to colored towels in the same way plastisol inks do. To get the best results when printing on our colored towels, we recommend the following imprinting methods. Prolucent, Color on Color and Black.

## PROLUCENT

A transparent white ink blend that appears as a light shade of the towel.



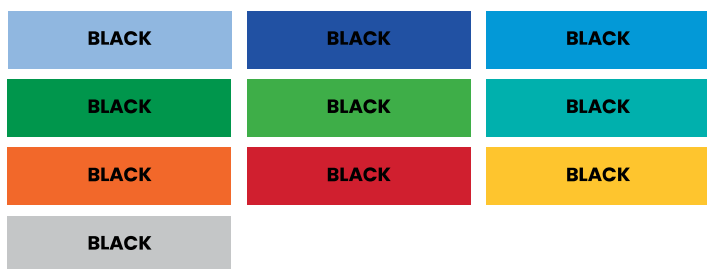
## COMBO

A combination of prolucent and color on color printing.



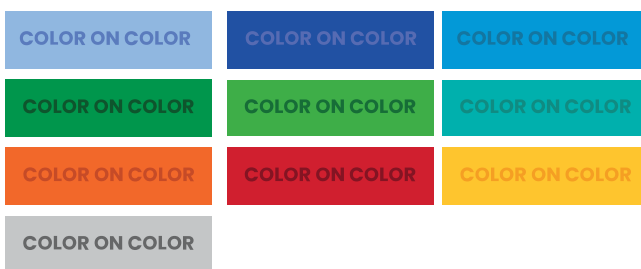
## BLACK

Black ink can be printed on select colors.

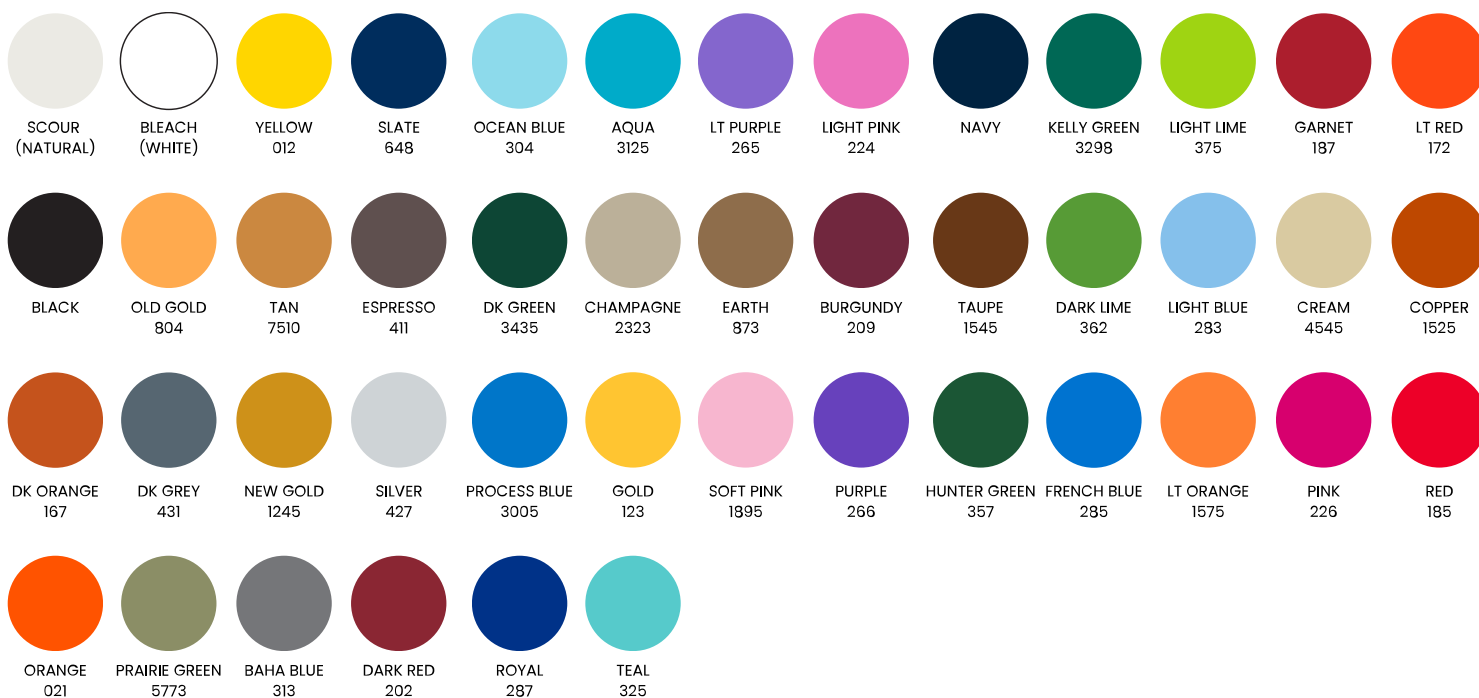


## COLOR ON COLOR

A darker color imprint that creates a tonal look on the towel.



## JACQUARD COLOR CHOICES





## PLACING AN ORDER

Please include the following in your Purchase Order:

- PO#
- Company Name
- Billing Address
- Contact Email/Phone Number (for proofing)
- In-Hands Date
- Item Number and Name
- Color of Item
- Quantity
- Decoration Method
- Imprint Colors / Thread Colors (reference PMS if applicable)
- Location of Imprint or Embroidery
- Art Instructions or any Additional Notes
- Shipping Address and Ship Method
- Send your purchase order to [orders@protowels.com](mailto:orders@protowels.com)
- Send your artwork to the address stated in the section below. Be sure to include company name and PO# in the subject line.

## ARTWORK

We recommend all files be sent via e-mail. Please make sure that you include your company's name and P.O. number with all e-mailed artwork. Submit your artwork to the following e-mails:

- Screenprinting = [proart@protowels.com](mailto:proart@protowels.com)
- Embroidery = [orders@protowels.com](mailto:orders@protowels.com)

Customers will be held responsible for any charges incurred to resolve problems if the digital file is not received in a usable format (see below). Contact ProService for more information.

### Acceptable File Types:

- Adobe Illustrator CC or below • ZIP (compression file)

### Acceptable Image Types:

- VECTORIZED • EPS • Layered File (300 dpi min.)
- PDF files are acceptable if originally created in Illustrator as vector artwork.

### Art Charges: \$40.00 (k) minimum per hour.

- Art charges will apply if requirements are NOT met and any necessary alterations are involved in order to meet production standards. WE DO NOT ACCEPT FAXED ART!

### Printed Artwork Specs

- All fonts and strokes must be converted to outlines.
- Minimum Type Size: Terry velour products = 15 pt.
- Minimum Line Weight: Terry velour products = 2 pt.
- Avoid art with straight lines or borders that follow the towel edges.
- Avoid thin lines and condensed lettering.

### Standard Imprint Ink Colors

Black, Gray (430 C), Purple (266 C), Dark Green (349 C), Navy Blue (281 C), Medium Blue (Reflex Blue), Yellow (Yellow C), Gold (1235 C), Orange (165 C), and Red (186 C). White is only used with plastisol inks and on smaller products like golf and rally towels.

### PMS COLOR MATCHING

We will attempt to match your PMS color request as best as we can, but we cannot guarantee a 100% match. Be sure to specify any PMS colors on original purchase orders.

### 4-COLOR PROCESS

Submit Artwork to be reviewed and quoted. NOTE: Some jobs may require additional spot colors to ensure quality product and good ink coverage. Minimum: 600 for golf / sport towels or 300 for beach towels. Art and film preparation charges are \$400.00 (k) plus screen charges for a minimum of 4 screens.

### VIRTUALS

- Virtuals are not your e-proof.
- Please limit virtual requests to 3 items per logo.
- Virtuals can take up to 72 hours, depending on complexity of artwork and number of virtuals requested.
- Virtuals are only mockups. They are not exact representations of how your product will appear.
- Product images are available for download on the website, as well as the ability to create your virtual mockups with our Virtual Studio tool.

## PROOFS

Art proofs will be e-mailed to you between 24-48 hours after order submission. All proofs must be approved by the customer and e-mailed back to us without delay. For repeat orders, proofs are provided upon request. Please advise ProService if you require a proof. A flat rate of \$5.00(k) will be applied for all paper proofs that do not require a pre-production sample. Delays on proof approval will increase production time. Embroidery reorders will not receive a proof unless requested.

### PRE-PRODUCTION PROOFS

\$40.00(k) on beach towels & \$15.00(k) for golf & rally towels, plus cost of product at min. quantity. Pre-production proofs may be REQUIRED for large orders (1,000+ pcs).

### EMBROIDERY ARTWORK SPECS

- Acceptable Digitized File Type: Tajima formatted files.
- Acceptable Image Types: .EPS, .JPG, .TIF, .AI, .PDF. Call for other acceptable formats. A digitizing fee will apply.
- Digitizing charges can be found on page 82.
- All tapes / files MUST include thread colors and sequence.
- Pro Towels is not liable if the DST file provided does not meet the requirements to embroider on our products.
- Lettering no smaller than 5mm is recommended.
- To edit a digitized file, there will be a \$31.25(g) charge.
- Thread colors can be matched to Pantone Colors as close as possible, if needed.
- Embroidery Thread Color Charge: \$31.25(g) per thread color change, unless change to black or white.
- Second location: \$3.75(g) each additional location.
- Personalization: \$3.75(g) each personalization for each piece.
- For quotes on stitch counts, please contact ProService.

### SAMPLES

- Sample orders are required in writing and shipper number MUST be provided.
- Requests received before 3 PM will ship SAME DAY from each respective location.
- Unless specified, we reserve the right to ship by most beneficial method.

### SPEC SAMPLES

50% off of EQP cost for item plus full set up. If the spec sample generates an order, no additional setup charges will apply.

### SELF PROMOTION

EQP less 25% on the following techniques: imprinting or embroidery.

### PRODUCTION TIME

All production and delivery times are subject to product availability, proof approval and credit approval. Production times are dependent on acceptable art and order confirmation. Delays on pre-production sample / proof approval or the absence of any needed information on the original purchase order may delay or add to the production time.

- Production times are dependent on acceptable art and order confirmation.
- In-hand dates must be clearly marked or stated on purchase order.

If no in-hands date is submitted, we reserve the right to ship within our standard production lead times.

- **LEAD TIMES**

All lead times are based on catalog quantities only. Please contact ProService for current lead times, which are subject to change or may alter due to high seasons in summer and winter months. Standard lead times are as follow:

- Imprinting: 5-7 working days after art approval.
- Embroidery: 5-10 working days after art approval.
- Sublimation: 10-15 working days after art approval.

### RUSH ORDERS

We may accommodate any request rush services based on current lead times and capacity. A 35% rush charge may apply. Please contact ProService for more information.

### LESS THAN MINIMUM

We may accommodate any less than minimum requests based on current capacity and with an additional charge. Please contact ProService for more information.



## INVENTORY

- Mill tolerance allows 5% variance in towel weights and sizes.
- Due to the flexible nature of textiles, a tolerance of 5% either way from center is acceptable for imprinting position.
- Production colors may vary among dye lots.
- We reserve the right to substitute product of equal or better specifications.
- Please allow extra time for sewn products (Ex. TT-25TG).

## CHANGES & CANCELLATIONS

- Changes may delay production and shipping.
- Canceled orders will be charged for costs of set ups, digitizing and possible art charges incurred as of cancellation date.
- Any changes made to an order (by phone) after received at factory must be confirmed in writing. Note: Changes may delay shipments and charges may apply. Adjustments to ship methods MUST be received 2 days before scheduled ship date or changes cannot be guaranteed.

## REORDERS

50% off set up fee on all exact reorders for screenprinted products (reorder must be placed within 1 calendar year). NO set up charges for exact reorders on embroidery. When reordering, please state previous invoice and PO#. No changes in artwork are allowed. If changes are requested, a new set up fee will be required. We cannot guarantee exact color matching on re-orders.

## OVERRUNS / UNDER RUNS

- Manufacturing standards dictate orders be subject to a  $\pm 3\%$  allowance, therefore orders may ship  $\pm 3\%$  unless exact quantity is requested.
- Exact quantities may be requested for a 5% surcharge.
- Orders specifying NO OVERRUNS may receive up to 3% under runs.

## BLANK GOODS

- Any blank goods ordered without finishing (1,000 or less) ship within 24 hours; any with finishing required will ship in 48 hours.
- Blank good orders of 1,000 or more without finishing will ship within 48 hours; up to 72 hours for up to 1,000 pieces with finishing. Call for details on larger orders.
- Any blank goods ordered with any type of finishing (grommets, tri-folding, etc.), will require an additional day.
- Blank goods altered in any way (i.e. Grommets, Tri-folding, etc.) are not returnable for credit.
- Blank goods can be returned within 72 hours of delivery date. Contact ProService for return authorization. Returns will be invoiced a \$50.00(a) restocking fee and all freight. Returns received without prior authorization will be denied.
- NOTICE: It is the responsibility of the customer to inspect for defects as well as style, color, size and quantity of the shipment PRIOR TO DECORATING.

## PACKAGING

- Poly bagging \$0.19(g) per item.
- Clear Vinyl Zipper Bags \$0.58(g) per item.
- Palletizing and shrink wrapping \$12.50(g) per pallet.
- Special fulfillment (packaging) available – call for pricing. If you want gift sets that does not appear in our product offering, we can assemble it for you. Please confirm your products will fit in desired packaging. Additional production time may be required.
- We will insert 3rd party supplier products into all gift sets for an additional handling fee. We will not be held responsible for the condition or inspection of customer supplied products.

## SHIPPING INFORMATION

- Complete shipping instructions must accompany each order before the order will be entered for production. If proper shipping information is not provided by order completion, Pro Towels reserves the right to ship the order directly to the distributor.
- Unless shipping methods or instructions are specified, we reserve the right to ship by most beneficial means of transportation.
- Pro Towels is not responsible for late deliveries/delays by the shipping carrier or due to unforeseen acts of nature (weather disasters), war, strikes, terrorism, etc. Final shipping cost is dependent on shipping from East or West Coast location.
- Pro Towels will not be held responsible for delays or damages caused by carrier. Claims must be made with shipping company.

## SHIPMENT CHARGES

- Third party shipping is available upon request. However, account number must be provided.
- Drop Shipments \$5.00(k) per location. Shipping charges are additional.
- Drop Shipments must be provided in an Excel spreadsheet. Contact ProService for spreadsheet template.

## FREIGHT QUOTES

- Contact Pro Service CS for freight quote assistance.
- Quotes are estimates only; actual costs may vary.
- Pro Towels will not be held responsible for variances between freight quotes provided and final shipping charges.

## PRODUCT COLOR SWATCHES

Please refer to pantone numbers throughout the catalog and on pg 75. These are for reference only (cannot be exact for textiles). Please request a sample for exact color.

## CLAIMS

Damaged/Defective/Misprinted merchandise: ALL CLAIMS must be made within 7 days of receipt of merchandise NO EXCEPTIONS. Failure to do so will void all claims! All products are guaranteed against defects in material and craftsmanship for 90 days from invoice date. Any credits or reprints are at the discretion of Pro Towels. An additional restocking fee will apply for pre-approved returns.

## COPYRIGHT / TRADEMARK LAWS

We assume submitted artwork is in full compliance with laws governing copyrights and trademarks. Customers agree to hold Pro Towels harmless for any damages and or costs rising under these laws as a consequence of our using the artwork. All logos portrayed in our catalog are for illustration only and are not available for sale, unless otherwise specified by the owner of the copyright.

## PRODUCT SAFETY & COMPLIANCE

Pro Towels complies with all applicable laws and regulations regarding the safety of our products, including CPSIA and Prop 65 regulations. We will also meet applicable recognized voluntary industry standards for our products and processes along with national/state/local laws and regulations. Contact for any compliance or Prop 65 documentation that is needed.

**Prices subject to change without notice due to tariffs on or after Jun. 30, 2020.**

## NEED IT IN A HURRY?

### 3-Day Service

Our ProShip 3-Day Service allows for one of the fastest turn around times in the industry!\*\* P.O. MUST specify ProShip 3-Day Service.

**\*\*Catalog quantities only. Production time begins from art and credit approval. Imprinted 1 color only or Embroidery up to 8,000 stitches only. Add 2 days production time to ProShip Orders with Special Packaging.**



# PRODUCT PMS COLOR REFERENCE

## SBS-14

- Red - PMS 199
- Royal Blue - PMS 2728
- Lime Green - PMS 361
- Coastal Blue - PMS 2925
- Gray - PMS 428

## 244

- Navy Blue - PMS 289
- Royal Blue - PMS 2728
- Red - PMS 200
- Lime - PMS 361
- Coastal - PMS 2925

## BT-

- Navy Blue - PMS 289
- Royal Blue - PMS 2728
- Coastal Blue - PMS 2925
- Lime - PMS 361
- Red - PMS 200
- Purple - PMS 2603
- Orange - PMS 1585
- Gold - PMS 1235

## BT-15

- Navy Blue - PMS 289
- Royal Blue - PMS 2728
- Coastal Blue - PMS 2925
- Lime - PMS 361
- Red - PMS 200
- Purple - PMS 2603
- Orange - PMS 1585
- Gold - PMS 1235

## BT-20

- Navy Blue - PMS 289
- Royal Blue - PMS 2728
- Coastal Blue - PMS 2925
- Lime Green - PMS 2287

## BT-5060C

- Royal Blue - PMS 2728
- Coastal Blue - PMS 2925
- Lime - PMS 361

## CB-10/CB-15

- Navy Blue - PMS 281
- Royal Blue - PMS 7686
- Yellow - PMS 102

## PESHTEMALS

- Gray - PMS 428
- Coastal Blue - PMS 2925
- Navy - PMS

## SR4560

- Royal Blue - PMS 2728
- Coastal Blue - PMS 2925
- Lime - PMS 363

## SLIP CLIP

- Blue - PMS 7691
- Green - PMS 7488
- Red - PMS 185
- Yellow - PMS 109

## CT-30/CT-34

- Lime Green - PMS 360
- Orange - PMS 1575

## FT-42

- Navy Blue - PMS 289
- Royal Blue - PMS 2728
- Red - PMS 200
- Orange - PMS 1585

## 1118DE (CG)

- Navy Blue - PMS 289
- Royal Blue - PMS 2728
- Red - PMS 200

## TRU-18 (CG)

- Navy Blue - PMS 289
- Royal Blue - PMS 2728
- Carolina Blue - PMS 278
- Hunter Green - PMS 343
- Kelly Green - PMS 7482
- Red - PMS 200
- Purple - PMS 2607
- Orange - PMS 1585
- Gold - PMS 1235
- Gray - PMS 428

## TRU-24 (CG/TG)

- Royal Blue - PMS 2728
- Orange - PMS 1585

## TRU-25/35 (CG/TG)

- Navy Blue - PMS 289
- Royal Blue - PMS 2728
- Coastal Blue - PMS 2925
- Hunter Green - PMS 343
- Lime Green - PMS 361
- Burgundy - PMS 209
- Red - PMS 200
- Purple - PMS 2603
- Orange - PMS 1585
- Gold - PMS 1235
- Gray - PMS 428

## MW-18/26/40

- Red - PMS 1787
- Navy Blue - PMS 7694
- Royal Blue - PMS 2945
- Grey - PMS 428

## PROMO FLEECE

- Gray - PMS
- Red - PMS
- Royal Blue - PMS
- Navy - PMS

## CHALLENGER LAMBSWOOL

- Navy Blue - PMS
- 533 Creme - PMS
- 463
- Red - PMS 200
- Gray - PMS 430

## SWEATSHIRT BLANKET/HOODIE

- Athletic Gray - PMS Cool
- Gray 3
- Scarlet Red - PMS 199



# PRESENTATION OPTIONS



## **RIBBON PACKAGING**

### **RIBBON**

Satin blanket binding is the soft, smooth, silky feeling binding perfect for the edge of a blanket, quilt, or throw.

Most colors available.



## **CUSTOM CARDSTOCK LABEL**

### **CARDSTOCK LABEL**

The card and ribbon packaging option is a great way to spruce up your product. These die cut, digitally printed cards can feature your designs.

Additional charges do apply for more than 5 colors.



## **ORGANZA BAG**

### **ORGANZABAG**

Attractive presentation for gifting blanket, towels and much more! The satin ribbon ties to close the organza bags securely.

Dimensions are measured when bag is lying flat and available in sizes: 10"x12" and 12"x14". Bags are available in a large variety of colors.





## **LEATHER STRAPPING**

### **LEATHERSTRAP**

Upgrade your blanket experience with the ultimate comfort and durability of our genuine leather blanket carrier strap. This adjustable leather strap is crafted from 100% genuine cowhide, and boasts a double layer design ensuring its indestructible nature. Over time, the leather will only become softer and more pliable, making it the perfect accessory for all your cozy blanket adventures. Fits most blankets and towels!



## **BLANKET STRAP**

### **FLSTRAP**

The black blanket strap is a simple and universal carrying strap that provides convenience and ease when transporting blankets. Discover how this handy strap can make transporting blankets a breeze.





**FULL-COVERAGE  
CUSTOM PRINTED  
PRODUCT BOX**  
**FULLCOLORBOX**

Customize your products with these beautiful full-coverage printed boxes. These corrugated boxes are offered in two sizes and comfortably fit most towels and blankets.



**SCREEN PRINTED  
CUSTOM PRODUCT BOX**  
**SCREENPRINTEDBOX**

Customize your products with these beautifully screen-printed boxes. These corrugated boxes are offered in two sizes and comfortably fit most towels and blankets. Two sizes available.



**BELLY BANDS**  
**BELLYBANDS**

Belly Bands, also known as packaging sleeves, are a simple way to brand your products. They provide a practical branding opportunity and information about the product. Customize your products with this very attractive and environmentally friendly option!





# pro towels



 **rackspace**

**PPAI**  
**100**  
2023  
#42 Supplier Company

**SAGE**  
Rated Supplier  
2023  
**A**