

INNOVATE & ELEVATE *new* collection | 2024



ARTISANAL
entertaining



ILLUMINATE
your space



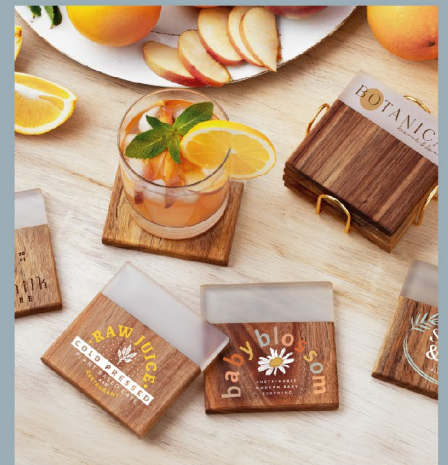
EFFORTLESS
greenery



FRAME YOUR
moments



THOUGHTFUL *living*



TABLETOP + *bar*

Acacia Wood & Resin Coaster Set



Item Information

Acacia is a durable hardwood with natural water-resistant and antimicrobial properties, making this an excellent material for drink coasters

The frosted resin top provide a dash of contemporary character to these stylish conversation pieces

Each natural wood coaster is unique in structure, resulting in slight color, grain, and size variations

Details & Pricing

Acacia Wood & Resin Coaster

#1681

Includes: 1 Coaster

Colors: Frosted Resin and Acacia Wood

Imprint Area: Specify on Order

Wood: 2 3/4" x 2"

Resin: 2 3/4" x 5/8" (Pad Print Only)

Maximum Imprint Colors: 2

Item Size: 3 7/8" x 3 7/8"

Weight: 96 = 20 lbs.

Packaging: Natural Kraft Packaging

Addl Run Charges: \$.25(G) Per Color

Set-Up Charge: \$40(G) Per Color

Colorfy Run Charge: \$.70(G)

Laser Engrave Run Charge: \$2.00(G)



Acacia Wood & Resin Coaster Set

#1684

Includes: 4 Coasters w/Metal Holder

Colors: Frosted Resin and Acacia Wood Coasters w/Gold Holder

Imprint Area: Specify on Order

Wood: 2 3/4" x 2"

Resin: 2 3/4" x 5/8" (Pad Print Only)

Maximum Imprint Colors: 2

Item Size:

Coaster: 3 7/8" x 3 7/8"

Metal Holder: 4 5/16" x 4 5/16" x 1 11/16"

Weight: 24 = 21 lbs.

Packaging: Natural Kraft Packaging

Addl Run Charges: \$1.00(G) Per Color

Set-Up Charge: \$40(G) Per Color

Colorfy Run Charge: \$1.95(G)

Laser Engrave Run Charge: \$8.00(G)



Packaging



Acacia Wood & Marble Coasters



Details & Pricing

Acacia Wood & Marble Coaster

#1686

Includes: 1 Coaster

Colors: Marble & Acacia Wood

Imprint Area: Specify on Order

Acacia Wood: 2 3/8" x 1 5/8"

Marble: 2 3/8" x 7/16"

Maximum Imprint Colors: 1

Item Size: 3 15/16" Dia. x 3/8"

Weight: 48 = 13 lbs.

Packaging: Natural Kraft Packaging

Set-Up Charge: \$40(G)

Colorful Run Charge: \$.70(G)

Laser Engrave Run Charge: \$1.50(G)



Acacia Wood & Marble Coaster Set

#1688

Includes: 4 Coasters w/Metal Holder

Colors: Marble & Acacia Wood

Imprint Area: Specify on Order

Acacia Wood: 2 3/8" x 1 5/8"

Marble: 2 3/8" x 7/16"

Maximum Imprint Colors: 1

Item Size:

Coaster: 3 15/16" Dia. x 3/8"

Metal Holder: 4 5/16" x 4 5/16" x 1 11/16"

Weight: 12 = 13 lbs.

Packaging: Natural Kraft Packaging

Set-Up Charge: \$40(G)

Colorful Run Charge: \$1.95(G)

Laser Engrave Run Charge: \$6.00(G)



Item Information

Enhance your table decor with these Acacia Wood & Marble Coasters

Crafted from acacia wood and cultured marble, these coasters marry the elegance of natural materials with a touch of modern sophistication

Embrace the durability of acacia hardwood, featuring innate water-resistant and antimicrobial properties, making these coasters a practical and stylish addition to your home

Enjoy the distinctiveness of each coaster, as the natural wood showcases individual variations in color, grain, and size, adding a distinctive charm to your tabletop

Acacia Wood & Marble Charcuterie Board



Item Information

Elevate your entertaining with this Acacia Wood & Marble Charcuterie Board, a fusion of natural charm and modern elegance

Crafted from acacia wood and non-porous cultured marble, this board boasts natural antibacterial properties, ensuring a safer and easier-to-clean surface than other materials

The genuine leather strap adds a touch of rustic elegance, making it easy to store or display your charcuterie board with style

Celebrate the individual characteristics of every board as the natural wood displays slight variations in color, grain, and size, creating a one-of-a-kind serving piece for your culinary delights

Details & Pricing

Acacia Wood & Marble Charcuterie Board

#905

Colors: Marble & Acacia Wood

Imprint Area: 8 1/4" x 1 3/4" (Laser Engraved)

Item Size: 9 15/16" Dia. x 1/2"

Weight: 10 = 32 lbs.

Packaging: Natural Kraft Packaging

Set-Up Charge: \$40(G) Per Location



Bamboo Cutting Board



Item Information

Elevate your kitchen with this Bamboo Cutting Board, complete with a genuine leather strap and laser engraving included in the pricing

Experience the advantages of bamboo—the softer surface is gentle on knife blades, ensuring longevity, and it boasts natural antibacterial and antimicrobial properties for a hygienic food preparation area

This versatile smaller board serves as an ideal bar board or a stylish presentation for individual portions of cheese, charcuterie, or appetizers, bringing a decorative touch to your table

Due to the natural characteristics of the bamboo grain, laser engraving may exhibit differences in color. No credits or refunds are available for these natural variations.

Details & Pricing

Bamboo Cutting Board

#903

Colors: Bamboo

Imprint Area: 4" x 1" (Laser Engraved)

Item Size: 5 1/2" x 11 1/2" x 1/2"

Weight: 50 = 27 lbs.

Packaging: Individually Bagged

Set-Up Charge: \$40(G)



Wood Handle Bottle Opener



Item Information

With its modern and sleek design, this Wood Handle Bottle Opener is not just a tool; it's a statement piece for any home or professional bar setting

The beechwood handle not only provides a comfortable grip but also adds a touch of natural elegance to your bar tools

Beyond its aesthetic appeal, the Wood Handle Bottle Opener is highly effective, effortlessly popping open your favorite beverages with ease

Details & Pricing

Wood Handle Bottle Opener

#867

Colors: Gray w/Wood Handle

Imprint Area: 2 1/2" x 1/4"

Maximum Imprint Colors: 1

Item Size: 6 7/8" x 2 5/16" x 1"

Weight: 100 = 18 lbs.

Packaging: Individually Boxed

Addl Run Charges: \$.25(G) Per Location

Set-Up Charge: \$40(G) Per Location



Bamboo Pizza Cutter



Item Information

Crafted with a sturdy bamboo handle, this Bamboo Pizza Cutter offers a natural and stylish touch to your kitchen utensils

Crafted from US FDA GRAS stainless steel to ensure quality and durability, the blade can be easily removed after use, facilitating seamless cleanup and adding convenience without hassle

Every unit arrives with a protective EVA sleeve designed to secure the blade during transit; this sleeve should be detached and discarded prior to use

Details & Pricing



Bamboo Pizza Cutter

#3901

Colors: Bamboo

Imprint Area: 2 1/4" x 1 1/2"

Maximum Imprint Colors: 2

Item Size: 4" x 3 5/16" x 11/16"

Weight: 100 = 23 lbs.

Packaging: Individually Boxed

Addl Run Charges: \$.25(G) Per Color/Location

Set-Up Charge: \$40(G) Per Color/Location

Colorfy Run Charge: \$.70(G)



11 oz Snap-A-Snack



Item Information

Snap into snack time with the versatile 11 oz. Snap-A-Snack container—an ideal companion for all ages

Customize your snack experience with a choice of five vibrant lid colors, allowing you to match your brand or showcase your personal style

Whether you're on the go or simply staying organized at home, the easy-to-use snap shut lid ensures your snacks stay fresh and accessible

The Snap-A-Snack is both CPSIA and FDA tested, meeting compliance standards for safety and quality

Details & Pricing

11 oz Snap-A-Snack

#141

Colors: Blue, Green, Yellow, Purple, or White

Imprint Area: Specify on Order

Lid: 2 1/2" x 1 1/8"

Side: 1" x 9/16"

Maximum Imprint Colors: 2

Item Size: 4 5/16" Dia. x 2 1/4"

Weight: 100 = 36 lbs.

Packaging: Bulk

Add Run Charges: \$.25(G) Per Color/Location

Set-Up Charge: \$40(G) Per Color/Location



3 Piece BBQ Set



Item Information

Elevate your grilling game with this 3 Piece BBQ Set, a must-have for outdoor cooking enthusiasts

The set includes three essential BBQ tools - a durable spatula, versatile fork, and convenient tongs - all neatly housed in a nylon zipper case

Designed for on-the-go convenience, the case features a sturdy handle, making it easy to carry to picnics, tailgating, camping trips, and backyard gatherings

Details & Pricing

3 Piece BBQ Set

#707

Colors: Black w/Silver Accessories

Imprint Area: 4" x 1 3/4"

Maximum Imprint Colors: 1

Item Size: 16" x 4 13/16" x 2"

Weight: 24 = 31 lbs.

Packaging: Bulk

Set-Up Charge: \$40(G)



Spatula



Fork



Tongs



Bamboo Bicycle Multi Tool



Item Information

Crafted with natural bamboo wood, this multi tool combines functionality with a touch of natural style

It features a flat head screwdriver, Phillips head screwdriver, with 6mm, 5mm, and 3mm hex keys, providing a wide range of tools for bike repairs and other everyday tasks

Compact and lightweight, it's easy to carry in your pocket or toolbox, making it a convenient tool for various activities beyond just bike repair

Details & Pricing

Bamboo Bicycle Multi Tool

#656

Colors: Bamboo

Imprint Area: 1 1/8" x 7/16"

Maximum Imprint Colors: 2

Item Size: 2 13/16" x 15/16" x 1"

Weight: 100 = 23 lbs.

Packaging: Individually Boxed

Addl Run Charges: \$25(G) Per Color/Location

Set-Up Charge: \$40(G) Per Color/Location



Bamboo Pliers Multi Tool



Details & Pricing

Bamboo Pliers Multi Tool

#657

Colors: Bamboo

Imprint Area: 1 1/2" x 5/16"

Maximum Imprint Colors: 2

Item Size: 4 1/8" x 2 1/8" x 1"

Weight: 50 = 30 lbs.

Packaging: Individually Boxed

Addl Run Charges: \$.25(G) Per Color/Location

Set-Up Charge: \$40(G) Per Color/Location

Colorfy Run Charge: \$.70(G)



Item Information

From DIY projects to everyday repairs, our Bamboo Pliers Multi Tool is a reliable and convenient tool that will impress both professionals and hobbyists

This multi tool is packed with essential features, including a file, 3mm flathead screwdriver, Phillips head screwdriver, 2" blade, saw blade, 4mm flat head screwdriver, small blade, bottle opener, and, of course, pliers

The folding design allows it to be easily stored and carried, making it perfect for on-the-go use

Bamboo Wine Tool Set



Details & Pricing

Bamboo Wine Tool Set

#839

Colors: Bamboo

Imprint Area: 3" x 2"

Maximum Imprint Colors: 2

Item Size: 5 1/16" x 3 11/16" x 1 5/16"

Weight: 40 = 30 lbs.

Packaging: Individually Boxed

Addl Run Charges: \$.25(G) Per Color

Set-Up Charge: \$40(G) Per Color

Colorfy Run Charge: \$.70(G)



Item Information

Crafted with high-quality bamboo this Bamboo Wine Tool Set is the perfect companion for wine enthusiasts and connoisseurs

This set includes a waiter's corkscrew with a bamboo handle, making it easy to open your favorite bottle of wine. Additionally, it comes with a wine stopper featuring a bamboo topper, allowing you to preserve the freshness of unfinished wine

Both tools are housed in a sturdy bamboo box with a magnetic closure, ensuring secure storage and convenient access

Mini Faux Potted Succulent



Item Information

Bring a touch of greenery to any space with a Mini Faux Potted Succulent, an eye-catching addition that requires no gardening expertise

Crafted with a square pot made from concrete, this offers a modern and chic aesthetic suitable for both the home and office

Available in four attractive styles, these mini potted succulents introduce a dash of nature without the need for maintenance—no watering or sunlight required!

Details & Pricing



Style A

Item Size:
2 3/8" x 4 1/4" x 2 3/8"
Weight: 50 = 25 lbs.

Style B

Item Size:
2 5/8" x 3 1/4" x 2 5/8"
Weight: 50 = 25 lbs.

Style C

Item Size:
2 3/8" x 3 1/4" x 2 3/8"
Weight: 50 = 27 lbs.

Style D

Item Size:
2 9/16" x 3 1/2" x 2 9/16"
Weight: 50 = 28 lbs.

Mini Faux Potted Succulent

#5900

w/Cement Pot and Succulent

Style A, B, C, or D (Specify on Order)

Colors: Gray Pot w/Green Succulent

Imprint Area: 1 1/2" x 1 1/2"

Maximum Imprint Colors: 2

Item Size: 2 3/8" x 2 5/16" x 2 3/8" (Pot)

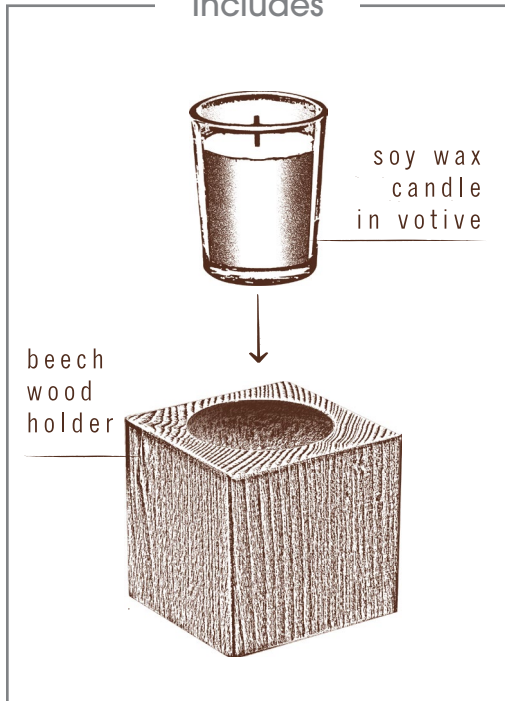
Packaging: Individually Boxed

Add Run Charges: \$.25(G) Per Color/Location

Set-Up Charge: \$40(G) Per Color/Location

Beechwood Cube Candle Holder

Includes



Packaging



Details & Pricing

Beechwood Cube Candle Holder

#5800

Colors: Natural Beechwood

Imprint Area: 2" x 2"

Maximum Imprint Colors: 2

Item Size: 3" x 3" x 3"

Weight: 50 = 37 lbs.

Packaging: Individually Boxed

Addl Run Charges: \$.25(G) Per Color/Location

Set-Up Charge: \$40(G) Per Color/Location

Colorfy Run Charge: \$.45(G)

Laser Engrave Run Charge: \$1.50(G)



Item Information

Perfect for use as a desk accessory, home decor, appreciation gift, or event centerpiece

Includes a solid beechwood candle holder with a 2 oz glass votive filled with unscented soy wax

Soy wax is non-toxic and burns cleaner, cooler, and longer than traditional paraffin waxes

Meets ASTM F2179-2020, F2417-17, F2601-11, and F2058-2007(2001)



4 x 6 Alder Wood Frame



Item Information

Display cherished memories in style with this 4 x 6 Alder Wood Frame, designed to bring warmth and elegance to any space

Crafted from high-quality alder wood, this frame showcases the wood's light color, straight grain, and resistance to warping, ensuring a lasting and beautiful display

Customize the frame with your choice of decoration methods, including pad print, Colorfy, or laser engraving

Details & Pricing

4 x 6 Alder Wood Frame

#3629

Colors: Natural

Imprint Area: Specify on Order

Vertical: 3 1/2" x 3/4"

Horizontal: 5 1/2" x 3/4"

Maximum Imprint Colors: 2

Item Size: 6 1/2" x 8 1/2" x 9/16"

Weight: 24 = 18 lbs.

Packaging: Individually Boxed

Addl Run Charges: \$.25(G) Per Color/Location

Set-Up Charge: \$40(G) Per Color/Location

Colorfy Run Charge: \$1.25(G)

Laser Engrave Run Charge: \$1.50(G)



Reusable Cotton Mesh Produce Bag Set



Item Information

Help eliminate single-use plastics by using this reusable zero-waste produce bag alternative!

Each bag is made from cotton and designed for breathability and includes sewn-in tare weight tags making check-out a breeze - simply subtract the bag weight from the total weight

Each set includes a small, medium, and large cotton mesh produce bag in a cotton drawstring carrying pouch

Details & Pricing

Reusable Cotton Mesh Produce Bag Set

#5010

Includes: 3 Cotton Mesh Produce Bags (1 Small, 1 Medium, and 1 Large) in a Drawstring Cotton Carrying Pouch

Colors: Natural

Maximum Imprint Colors: 1

Imprint Area: 2" x 4 1/2"

Item Size:

Carrying Pouch: 5 7/8" x 9 11/16" x 1/8"

Small Bag: 11 1/2" x 8" x 1/8"

Medium Bag: 11 1/2" x 13" x 1/8"

Large Bag: 11 1/2" x 16" x 1/8"

Weight: 50 = 22 lbs.

Packaging: Bulk

Addl Run Charges: \$.25(G) Per Location

Set-Up Charge: \$40(G) Per Location



Drawstring Cotton Carrying Pouch

Contains a small, medium, and large cotton mesh produce bag

Reusable Cotton Mesh Tote Bag



Item Information

Choose zero-waste living with this reusable produce bag, a practical alternative that helps eliminate the need for single-use plastics

The stretchable mesh cotton design accommodates a variety of items and allows for easy viewing

Includes a durable 12" woven cotton shoulder comfort strap

Details & Pricing

Reusable Cotton Mesh Tote Bag

#5012

Colors: Natural

Imprint Area: 4" x 2 1/2"

Maximum Imprint Colors: 1

Item Size: 17" x 15" x 1/8"

Weight: 50 = 22 lbs.

Packaging: Bulk

Addl Run Charges: \$.25(G) Per Location

Set-Up Charge: \$40(G) Per Location



Leather Keytags



Details & Pricing

Leather Snap Keytag #4420

Colors: Tan

Imprint Area: Specify on Order

Front: 1/4" x 1 3/4"

Back: 1/4" x 1 3/4"

Maximum Imprint Colors: 1

Item Size: 1 3/16" x 4 5/8" x 1/2"

Weight: 500 = 19 lbs.

Packaging: Polybagged

Addl Run Charges: \$.25(G) Per Location

Set-Up Charge: \$40(G) Per Location

Laser Engrave Run Charge: 1.00(G)



Item Information

Elevate your style with the polished finished outside and soft, raw suede interior of this keytag, while keeping your keys organized and accessible with the included stainless steel split ring

The strong snap on leather design ensures easy attachment to your belt, purse handle, or backpack, providing convenience on the go

Crafted using authentic leather complemented by sleek gunmetal-finished components

Details & Pricing

Leather Spring Clip Keytag #4421

Colors: Tan

Imprint Area: Specify on Order

Front: 1/4" x 1 3/4"

Back: 1/4" x 1 3/4"

Maximum Imprint Colors: 1

Item Size: 1 3/8" x 5 1/8" x 7/16"

Weight: 500 = 39 lbs.

Packaging: Polybagged

Addl Run Charges: \$.25(G) Per Location

Set-Up Charge: \$40(G) Per Location



Item Information

Enhance your brand with this genuine leather keytag adorned with color-coordinated stitching

The 360-degree swivel spring clip offers quick key access and can attach to bags, belts, or belt loops

Crafted with durable sleek gunmetal-finished components and includes two split ring keyrings to keep your keys organized and accessible

Bamboo Hotel Keytag



Item Information

Rediscover the charm of retro style with our Bamboo Hotel Keytag, reminiscent of the classic designs seen in hotels and motels, but with a modern twist

These keytags are crafted from bamboo, providing a stylish alternative to conventional plastic keytags

Comes complete with a metal split ring and a triangular jump ring attachment for easy key attachment and secure holding

Details & Pricing

Bamboo Hotel Keytag #757

Colors: Bamboo

Imprint Area: 7/8" x 2"

Maximum Imprint Colors: 2

Item Size: 1 3/4" x 3 1/2" x 1/8"

Weight: 1000 = 26 lbs.

Packaging: Polybagged

Addl Run Charges: \$.25(G) Per Color/Location

Set-Up Charge: \$40(G) Per Color/Location

Pickleball Keytags

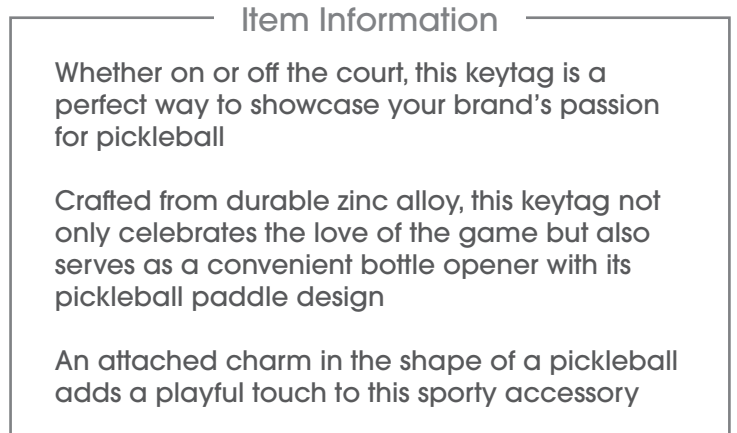


Item Information

Capture the spirit of America's fastest growing sport with this Pickleball Keytag

Featuring a meticulously crafted design with an electroplated surface, it showcases a miniature paddle and pickleball

Crafted with precision, this keytag captures the essence of the sport with its detailed design, making it a stylish and resilient accessory for pickleball enthusiasts



Item Information

Whether on or off the court, this keytag is a perfect way to showcase your brand's passion for pickleball

Crafted from durable zinc alloy, this keytag not only celebrates the love of the game but also serves as a convenient bottle opener with its pickleball paddle design

An attached charm in the shape of a pickleball adds a playful touch to this sporty accessory



Details & Pricing

Pickleball Keytag

#9040

Colors: Silver w/Yellow Accent

Imprint Area: Specify on Order

Vertical: 1/2" x 3/4"

Horizontal: 1/2" x 3/4"

Maximum Imprint Colors: 2

Item Size: 1 7/8" x 3 13/16" x 1/8"

Weight: 250 = 25 lbs.

Packaging: Polybagged

Addl Run Charges: \$.25(G) Per Color

Set-Up Charge: \$40(G) Per Color



Details & Pricing

Pickleball Bottle Opener Keytag

#9041

Colors: Silver

Imprint Area: 7/8" x 1/4"

Maximum Imprint Colors: 2

Item Size: 1 5/16" x 3 3/4" x 1/8"

Weight: 250 = 17 lbs.

Packaging: Polybagged

Addl Run Charges: \$.25(G) Per Color

Set-Up Charge: \$40(G) Per Color



On The Go Golf Kit



Details & Pricing

On The Go Golf Kit

#5003

Colors: Assorted Color Accessories in a Gray and White Tin

Imprint Area: 1 1/2" x 2 1/2"

Maximum Imprint Colors: 2

Item Size: 2 3/8" x 3 5/8" x 13/16"

Weight: 100 = 24 lbs.

Packaging: Polybagged

Addl Run Charges: \$.25(G) Per Color

Set-Up Charge: \$40(G) Per Color

Colorfy Run Charge: \$.45(G)



Item Information

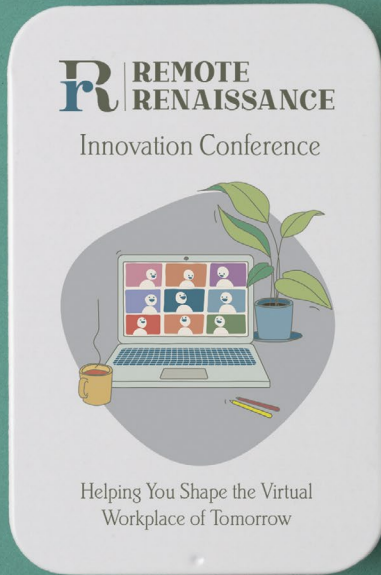
Tee off with confidence and style wherever you are with our On the Go Golf Kit, a must-have for golf enthusiasts on the move

Each set includes 2 3/4" wood golf tees (4), 1 5/8" wood golf tees (2), poker chip ball markers (4), wood ball markers (2), wood divot tools (2), and a pen

The convenient tin carrying case features a secure slide lid and includes a breakdown of the enclosed items on the back, keeping everything in its place



On The Go Desk Kit



Front



Back

Details & Pricing

On The Go Desk Kit

#5001

Colors: Assorted Color Accessories in a Gray and White Tin

Imprint Area: 1 1/2" x 2 1/2"

Maximum Imprint Colors: 2

Item Size: 2 3/8" x 3 5/8" x 13/16"

Weight: 100 = 15 lbs.

Packaging: Polybagged

Addl Run Charges: \$.25(G) Per Color

Set-Up Charge: \$40(G) Per Color

Colorfy Run Charge: \$.45(G)



Item Information

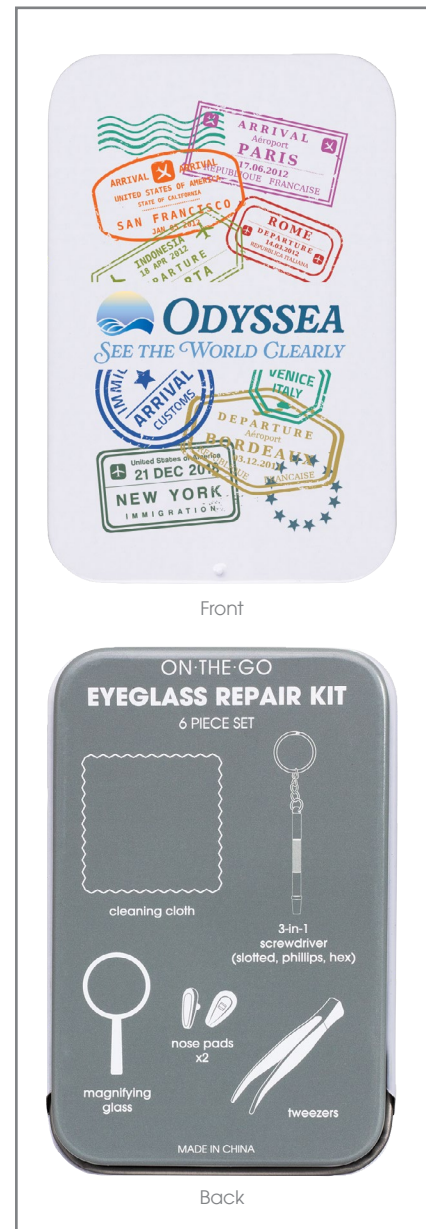
Stay organized and ready for any task with the On the Go Desk Kit, your portable office essentials in a sleek tin case

Each set includes mini scissors, a set of sticky notes, a mini stapler, staples, pen, and 10 paperclips

The convenient tin carrying case features a secure slide lid and includes a breakdown of the enclosed items on the back, keeping everything in its place



On The Go Eyeglass Repair Kit



Details & Pricing

On The Go Eyeglass Repair Kit

#5004

Colors: Assorted Color Accessories in a Gray and White Tin

Imprint Area: 1 1/2" x 2 1/2"

Maximum Imprint Colors: 2

Item Size: 2 3/8" x 3 5/8" x 13/16"

Weight: 100 = 12 lbs.

Packaging: Polybagged

Addl Run Charges: \$.25(G) Per Color

Set-Up Charge: \$40(G) Per Color

Colorfy Run Charge: \$.45(G)



Item Information

See clearly and confidently with our On the Go Eyeglass Repair Kit, a handy solution for unexpected eyewear adjustments

Each set includes a magnifying glass, nose pads, tweezers, 3-in-1 screwdriver, and a cleaning cloth

The convenient tin carrying case features a secure slide lid and includes a breakdown of the enclosed items on the back, keeping everything in its place



Travel Pillbox



Item Information

Travel with confidence using our Travel Pillbox, designed with 10 various sized compartments to keep your pills organized on the go

The clear, see-through design makes finding the right pill a breeze, ensuring you never miss a dose while you're away from home

Stay organized effortlessly by labeling each compartment for quick and easy access, making your daily routine a seamless experience

Beyond pills, this versatile pillbox is perfect for organizing small crafts or hardware, adding an extra layer of functionality to your daily life

Details & Pricing

Travel Pillbox

#88

Colors: Frost w/Gray Clasp

Imprint Area: 2" x 1 1/8"

Maximum Imprint Colors: 2

Item Size: 3 3/4" x 2 1/2" x 1 3/16"

Weight: 100 = 12 lbs.

Packaging: Polybagged

Addl Run Charges: \$.25(G) Per Color

Set-Up Charge: \$40(G) Per Color

Light Up Waste Bag Dispenser



Item Information

Comes complete with 10 biodegradable white waste bags, ensuring you're prepared for any cleanup

The built-in LED light, powered by 3 replaceable LR1130 button cell batteries, makes nighttime walks a breeze

Attach it easily to leashes, bags, or belts with the included carabiner clip. Practicality meets portability!

Details & Pricing



Light Up Waste Bag Dispenser #338

w/10 Biodegradable White Waste Bags and
3 Replaceable LR1130 Button Cell Batteries
Colors: Pink, Green, Blue, or White

Imprint Area: 1 1/2" x 1"

Maximum Imprint Colors: 2

Item Size: 4 7/8" x 1 5/8" Dia.

Weight: 250 = 35 lbs.

Packaging: Polybagged

Add Run Charges: \$0.25(G) Per Color

Set-Up Charge: \$40(G) Per Color

Beveled Glass Ornament



Item Information

Elevate your holiday decor with our Beveled Glass Ornament, offering a touch of elegance in your choice of two shapes - circle and hexagon, adding a personalized touch to your promotion

Each ornament is thoughtfully presented in a sleek black gift box, securely nestled with a protective foam base, ensuring it arrives safely and beautifully

The silver ribbon adds a touch of festive charm, making it ready to hang on your tree right away

Details & Pricing



1715 Round

Imprint Area: 1 3/4" x 1 5/16"
Item Size: 3" Dia. x 1/8"
Weight: 100 = 12 lbs.

1715 Hexagon

Imprint Area: 1 3/4" x 1 3/4"
Item Size: 3" x 3 7/16" x 1/8"
Weight: 100 = 12 lbs.



Beveled Glass Ornaments #1715

Colors: Clear w/Silver Ribbon
Maximum Imprint Colors: 2
Packaging: Black Gift Box

Addl Run Charges: \$.25(G) Per Color/Location
Set-Up Charge: \$40(G) Per Color/Location
Colorfy Run Charge: \$.45(G)



Bear Magnet



Item Information

Crafted from solid metal, this bear magnet features movable arms and legs, adding a playful touch to any magnetic surface

The colorful matte finish not only provides a contemporary feel but also adds a splash of charm to your fridge, locker, or any magnetic backdrop

Two strong magnets on the back ensure a secure hold, allowing the bear to cling to your refrigerator or other magnetic surfaces with ease

Details & Pricing

Bear Magnet

#749

Colors: Black, White, Red, Blue, and Brown

Imprint Area: 3/8" Dia.

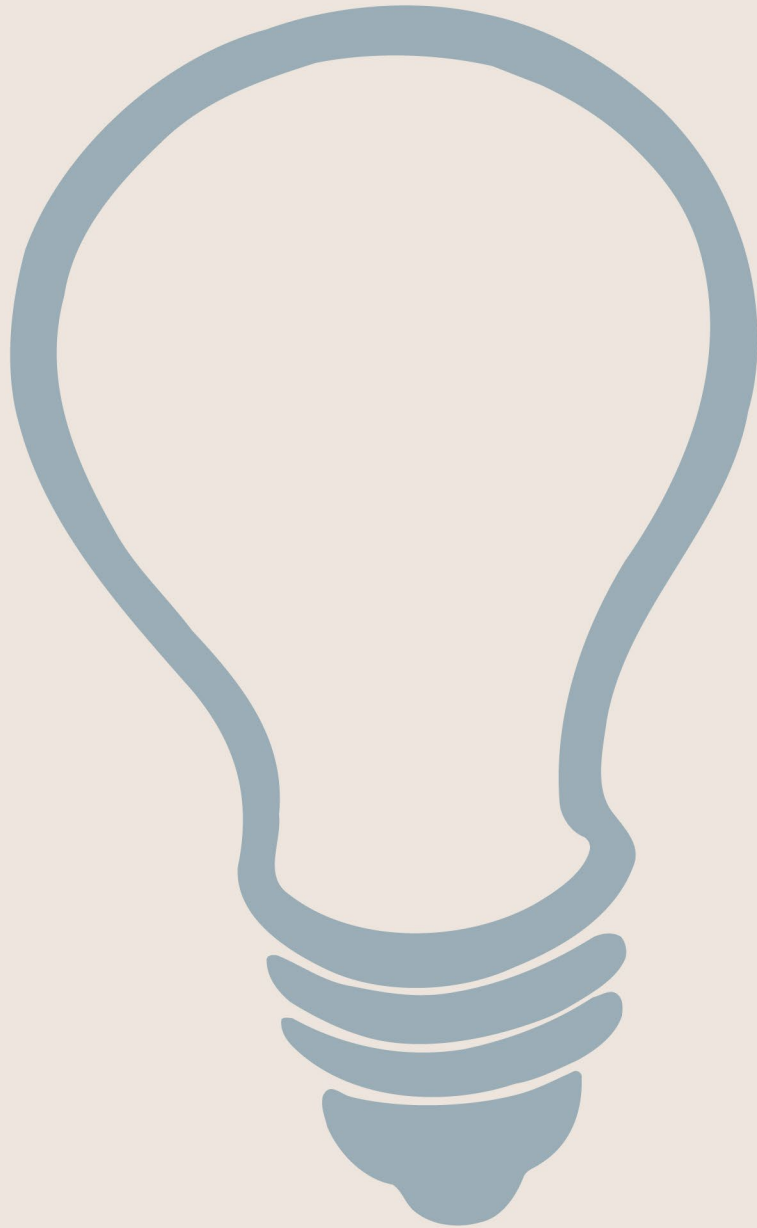
Maximum Imprint Colors: 1

Item Size: 1 1/8" x 2" x 3/4"

Weight: 100 = 8 lbs.

Packaging: Polybagged

Set-Up Charge: \$40(G)



Get Social With Us!



PLEASE CHECK WWW.ILLINILINE.COM FOR THE MOST CURRENT PRICING
ALL PRICING IS SUBJECT TO CHANGE WITHOUT NOTICE