

superior

THE ART OF DECORATING

2024



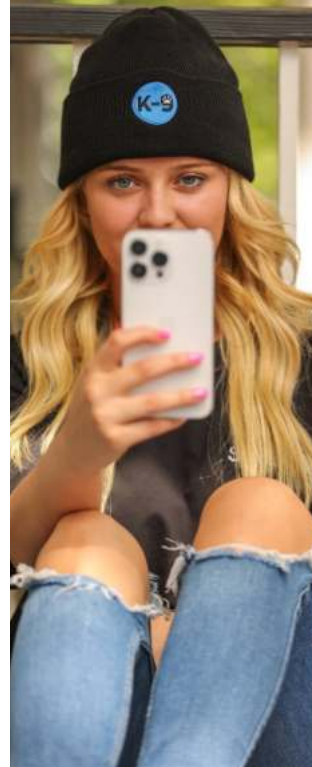
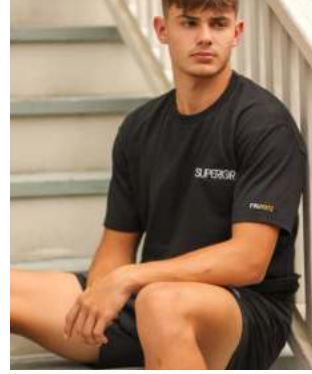
Part of the

pro towels family

ASI 79750
PPAI 112755
SAGE 52093
WWW.SUPERIORIDEALINE.COM

CONTENTS

SUPERIOR ONE	4
EMBLEMS	8
ALL-OVER PRINTS	14
GHOST INK	15
JUMBO PRINTS	16
WRAP PRINTS	17
DISTRESSED	18
FOIL PRINTING	19
REFLECTIVE INK	20
SIMULATED 4-COLOR PROCESS	21
4-COLOR PROCESS	22
GLOW IN THE DARK	23
EMBROIDERY	24
MIXED MEDIA	25
ZIPPERS	26
PERFORMANCE FABRICS	27
METALLIC INKS	28
MORE THAN T-SHIRTS	29



Our Product. Your Design. One Place.

SUPERIOR

pro towels

**Get your Product + Decorating all
under SUPERIOR ONE.**

**With SUPERIOR ONE, we offer a simple
line-up of high-quality t-shirts to get
designed, decorated, and shipped all under
one roof!**

- **In House Design**
- **Fulfillment, Kitting, and Program Capabilities**
- **PSST Program with SanMar**
- **Social Compliance Audits**
- **Free Inbound Freight Program**
with SanMar, AlphaBroder, and S&S Activewear
- **Prop 65 / CPSIA Compliant**



AUTHORIZED DECORATOR





SUPERIOR
Our Product. Your Design. One Place.



T-1030

Lightweight T-Shirt

This design utilizes 30 singles ring-spun jersey and is designed to be exceptionally smooth for enhanced printability, is lightweight and super comfortable.

- 100% Ring Spun Cotton
- Non-Ionic Hydrophilic Finishing
- Shrink Controlled Finishing
- 1" Sleeve and Bottom Hems
- Ribbed Collar
- Side Seamed
- 145gsm
- 4.3oz
- Lead Time: 5 Business Days

ATHLETIC HEATHER



NAVY

CHARCOAL HEATHER

WHITE

BLACK

RED

GRAY



T-1024

Midweight T-Shirt

24 singles, 5.2 oz., 100% ring-spun cotton, except Athletic Heather (85% cotton/15% viscose) and all other Heathers (60% cotton/40% polyester).

- 100% Ring Spun Cotton
- Non-Ionic Hydrophilic Finishing
- Shrink Controlled Finishing
- 1" Sleeve and Bottom Hems
- Ribbed Collar
- Side Seamed
- 180gsm
- 5.2 oz
- Lead Time: 5 Business Days

RED



NAVY

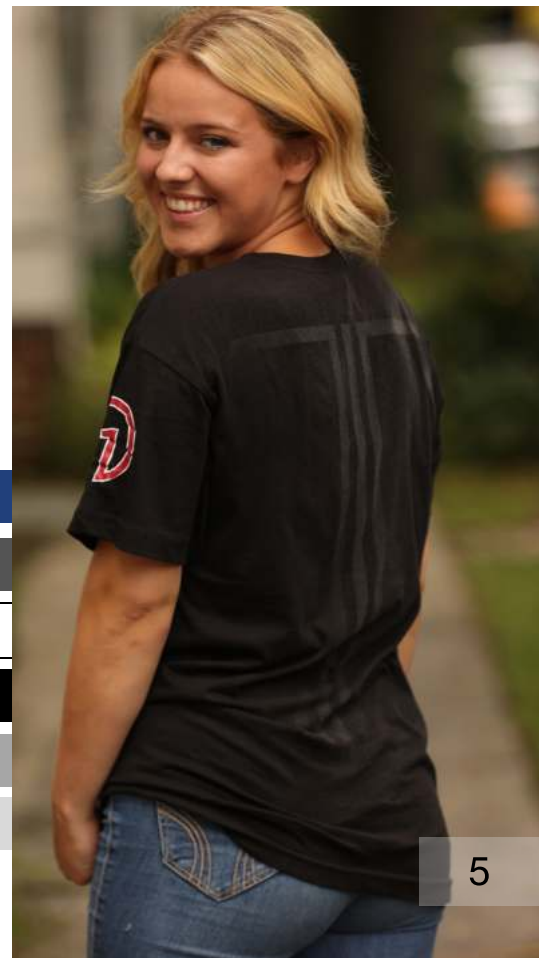
CHARCOAL HEATHER

WHITE

BLACK

ATHLETIC HEATHER

GRAY



MORE COLORS AVAILABLE . PLEASE CALL FOR DETAILS



FWJ-1972

Recycled T-Shirt

The Fairweather Johnson line is 100% recycled. Recycled cotton is the transformation of used cotton fabric into fibers that can be remade into products. Reclaimed manufacturing can reduce water consumption by 60 gallons per t-shirt and the carbon footprint impact by 45%. Utilizing cut-off wastes from our Textisle Brand of shirts, the recycled material is spun into a new yarn, with no use of additional dye. Fairweather Johnson is a sustainable closed-loop production solution to better serve the environment and our customers!

- 20s jersey
- 5.5 oz
- 185 gsm
- 1x1 ribbed collar
- 1" sleeve and bottom hems
- shrink controlled finishing
- tear-away label
- Lead Time: 5 Business Days

SPORTS GRAY

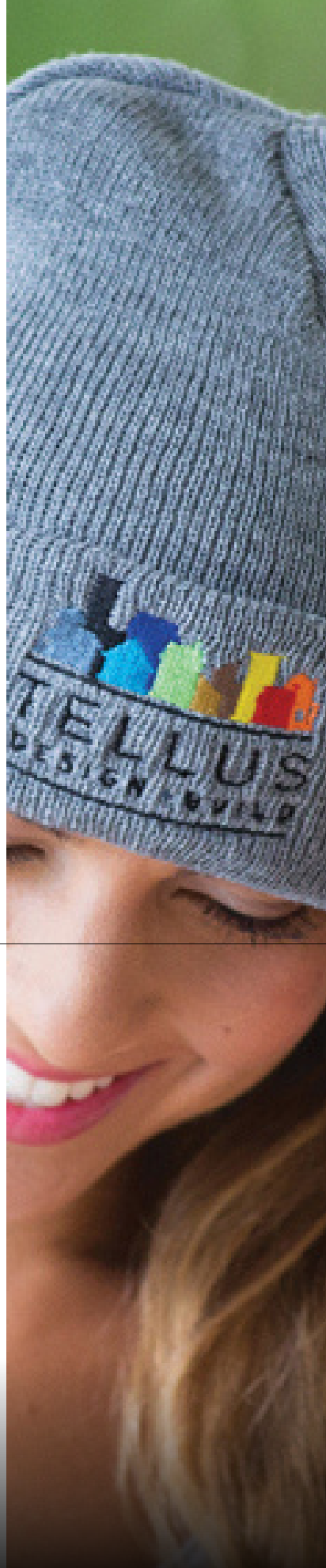


- FOREST
- WHITE
- MAROON
- ASH
- NAVY
- BLACK HEATHER
- MILITARY GREEN
- BLACK
- RED
- ATHLETIC GRAY

MORE COLORS AVAILABLE . PLEASE CALL FOR DETAILS



SCREENPRINT



EMBROIDERY



SPECIALTY

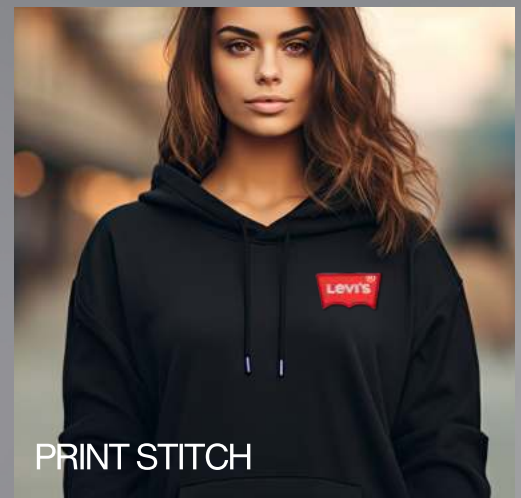


EMBLEMS

WHAT'S NEW

EMBLEMS

Embellish your favorite items with our fun new emblems! Get creative with our many emblem options that give your logo the perfect look and feel!



GENUINE LEATHER

Designs are laser etched into the leather to enhance your hats, bags, and jackets. In this process the leather is burned with the laser and gets permanently engraved. As with all genuine leather products, shades of leather can vary.



Genuine Leather
Color Natural- Low Contrast



Genuine Leather
Color Taupe- Low Contrast



Genuine Leather
Color Caramel- Low Contrast



Genuine Leather
Color Natural- High Contrast



Genuine Leather
Color Taupe- High Contrast



Genuine Leather
Color Caramel- High Contrast

Our Genuine Leather Patches are a natural product, truly authentic. Variations in color are not to be considered a fault but inherent of the natural beauty and uniqueness of the leather. Every piece is different, therefore irregularities in the consistency and depth of the color are expected. Also, due to the nature of leather (its colors and textures), digital simulation might vary from the actual physical sample. We at World Emblem strive for your satisfaction and will do our very best to maintain uniformity of all patches.

FAUX LEATHER (VEGAN)

Our Faux Leather Patches provide the look and feel of real leather with a consistent, even finish. Available in multiple color choices, our patches are laser engraved, providing a rustic but upscale look for your brand. And best of all, our Faux Leather is easy to maintain and safe for domestic wash!



Faux Leather
Black / Silver



Faux Leather
Chocolate / Black



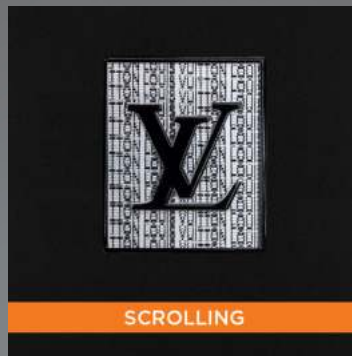
Faux Leather
Chestnut / Black



Faux Leather
Sandstone / Black

HOLOGRAPHIC

Holographic emblems use animation to tell the story of your brand. The ability to change or move the image comes from lenticular technology, which allows your emblem to have multiple eye-catching looks when viewed from different angles.



BEVELED

Beveled edges give a sharper, more refined look. This is our most durable emblem, and is specifically made for hard goods, hats, and heavy duty garments such as outerwear.





DOMED

Beveled edges give a sharper, more refined look. This is our most durable emblem, and is specifically made for hard goods, hats, and heavy duty garments such as outerwear.



PRINT STITCH

Print Stitch Patches are a combination of our two most popular patches: embroidered and sublimated. The background is printed with a full-color, photographic image with added embroidery to give dimension and texture.



3-D EMBROIDERED



Custom size embroidered emblem with a 3D effect on certain parts of the design, cut with adhesive backing to apply on surfaces through heat or pressure.



Designs can have up to 15 unique thread colors.

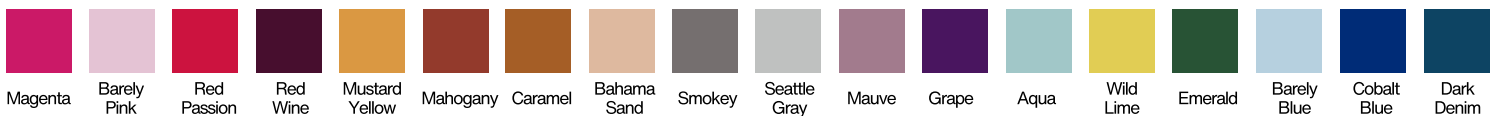
FAUX SUEDE



Our smooth to the touch, Faux Suede Patches are laser etched providing contrasting, engraved detail to your design while maintaining a soft feel on your fingertips. Available in 23 different colors.



Additional Faux Suede Colors Available:





SIGNATURE EMBLEM

The elevated 3D effect of our distinctive emblem enables intricate detailing, and you have the flexibility to choose from a wide range of colors, including both metallic and non-metallic finishes. A clear finish option is also available. Our signatures are guaranteed to capture attention!



Non-metallic Finish

Clear Finish

Metallic Finish

PVC EMBLEM

Customized PVC Emblems that are durable but also flexible, versatile & dimensional. We have all your wishes covered with Pantone color matching and waterproof protection.



A maximum of 4 colors can be used on a single PV+ Emblem to remain within standard turn-times. Please note that any designs with 5-8 colors will cause a delay on production and turn around times.

Only solid colors are available, without any gradients.

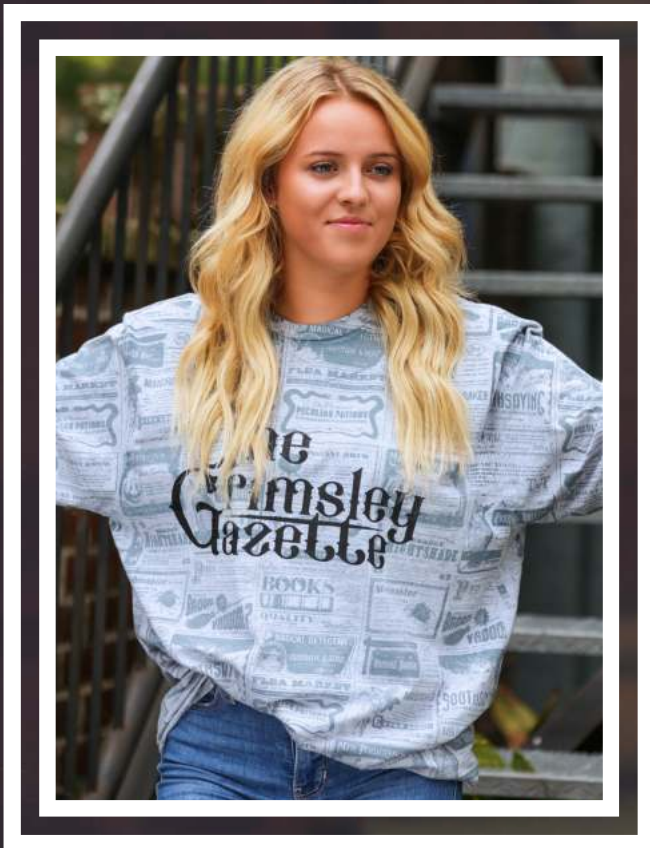
Pantone color matching is available. *Metallic & Neon colors not allowed*

"Glow in the dark" color is available.

ALL-OVER PRINTING

Creativity has no limits; express it with unique all-over prints that cover the entire shirt. Belt or Overall Prints consist of printing the garment, mostly t-shirts, to achieve the look of having 100% coverage, with artwork that prints over the seams, sometimes including the collar, the sleeves, the hem or all of the above.

Water based ink is used in this process for a soft to the touch feel. This printing technique is only a one color print, but can be combined with other techniques. The finished result will give your apparel a custom retail look. Every shirt has a unique finish due to the overall screen. Imperfections are part of the design.



GHOST INK®

Tone-on-Tone graphics printed using our Ghost Ink® are completely invisible until activated with water. As the product becomes wet, the designs begin to appear. Once the product is dry again, the graphics become invisible again.



WATER ACTIVATED

JUMBO PRINTS

Smaller than an all over print, jumbo screen prints still typically fill up the front of the shirt, but do not extend out to the edges of the sleeves.

Jumbo printing is an economical way to get a large print.

Jumbo print is best used when your design fills 85% of either the front or back of the apparel item. Maximum imprint size is 20" x 20" , depending on both the style and size of the shirt. Designs can be multiple colors and combined with water based/plastisol techniques. Printing in different positions can mimic the look of an overall print.

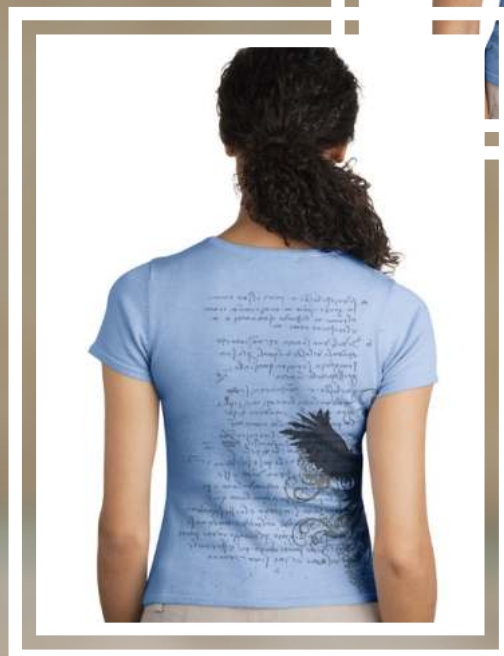
*24" may not cover entire shirt as shown.



WRAP PRINTS

Wrap print involves a multi-colored/ multi-positioned design that gives the impression of the artwork wrapping around the garment when worn. Normal print positions are front-left to back or front-right to back. Maximum imprint area is 18" to 20" wide, depending on the style and size of the shirt, and needs to be 1" to 2" away from the armpit seam.

Combine with other printing options to give the impression of a full 360° print.



DISTRESSED

Distressed printing gives your garment a completely soft worn out look, as if it has gone through years of wear.

A distressed print actually appears cracked and broken and there are various types of distressed styles to choose from (cracked or stamped for example) as well as degrees of distressing an image. Superior can create the final “distressed” image based on requirements.

This technique is great for recreating an aged, retro, or antique look while adding interest to any logo.





FOIL PRINTING

Foil printing is great when looking to create a reflective surface on a garment and make your designs POP.

A special thin layer of metallic foil is added after printing and then heat pressed. It works well as a design accent or as a bold, iconic statement.

This process has most commonly been seen in high end fashion brands such as Ed Hardy® and Affliction®.

Available in various colors including: Gold, Silver, Red, Blue, Black, Copper, Hot Pink, Light Pink, and Clear, our process achieves professional results and your foil prints will look superior to many of the top name brands on the market.

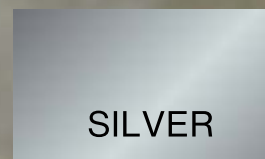


*It is difficult to achieve fine detail with foil printing.

Foil Colors Available:



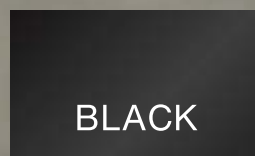
GOLD



SILVER



RED



BLACK



BLUE



COPPER



HOT PINK

WWW.SUPERIORIDEALINE.COM

REFLECTIVE INK

Draw on Superior's expertise in specialty screen printing on textiles:

Reflective ink is both functional for safety projects and a cool effect for designers to play with.

Garments printed with reflective ink provide enhanced visibility for joggers, cyclists, construction workers and kids.

Create a fashion statement for nightclubs, using this technique on branded and event merchandise.

Reflective Ink reflects any bright light (like headlights) and is perfect for high-visibility apparel. It is best for larger areas of print and on simple designs with few thin lines. Reflective ink requires a white underbase if not on white apparel.



SIMULATED 4-COLOR PROCESS

Simulated 4-color Process uses spot color inks (solid, opaque colors) and half-tones to achieve a photo-realistic look. Generally requires the use of an underbase to achieve brighter and more vivid colors.

This is a great way to print complex images onto white, black and colored garments.

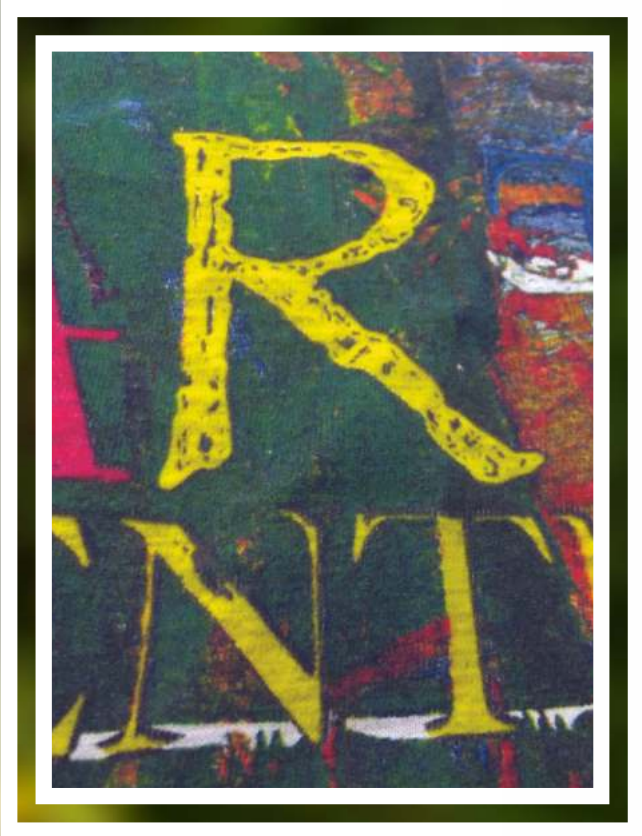


4-COLOR PROCESS

4-Color Process is used to create a multicolor design using four inks: Cyan, Magenta, Yellow, and Black (also known as CMYK). These colors can be used in combination and in varying degrees of transparency to create any color.

This process works best on light colored shirts because the transparent CMYK inks tend to pick up the hue of the shirt underneath them.

However 4-color process printing is a Superior specialty and our team is expert in printing on dark fabrics as well as light.



GLOW IN THE DARK

Glow in the Dark special effect inks are great for many uses. They can enhance a design to make it stand out or can be used as a stand-alone special effect on a shirt.

Great for Halloween shirts, rock designs, or any design that you want to glow in the dark!

In the dark, the design appears as if it is glowing. The glowing effect is activated by prolonged exposure to sunlight or interior light. This ink glows just like the hands on a watch that has been placed in a bright light.

It can be used over a specific area or all over the design. Due to the phosphorescent nature of this ink, the final print will have a slight green hue. The glow in the dark print requires a white underbase if not on white apparel.



EMBROIDERY

Embroidery is one of the most popular methods for adding a high perceived value to a logo and provides a professional appearance on a variety of products.

It has a great level of durability and will wash and dry clean well while still maintaining appearance in color and outline.

Superior has the specialized knowledge and experience on a wide variety of fabrics to assure that your logo will look its best. The quality of digitizing, stitch count, and the number of thread colors influence the look and feel of the final piece. Artwork needs to be properly digitized in order to achieve the best result.



PLEASE CONTACT US FOR A CUSTOM QUOTE.

MIXED MEDIA

Mix and match different decorating techniques to create dramatic visual effects that make logos and designs truly pop.

Sparkling glitter, foil or metallic sheens, bright colors printed in a variety of versatile ways and high quality embroidery that allow you to promote the power of any logo.

Superior's in-house design team can illustrate the various options to mix and match techniques to create stunning art or logos.

*It is difficult to achieve fine detail with foil printing. 1-color only, we can't print a design with multiple foil colors.



ZIPPERS

With the popularity of all-over printing, it's becoming increasingly common to screen print over zippers, seams and pockets, particularly on fleece apparel.

Superior's expertise in helping with the selection or design of artwork, as well as the correct printing setup, means you can achieve outstanding results.

In order to achieve good image detail and ink penetration into the garment, the design must take into account the variable height of the print surface when printing over different layers of fabric, seams or zippers. Artwork needs to be created to allow for this and we recommend using line art rather than solid block areas to reduce unnecessary heavy ink coverage.

*Designs requiring underbase are not recommended



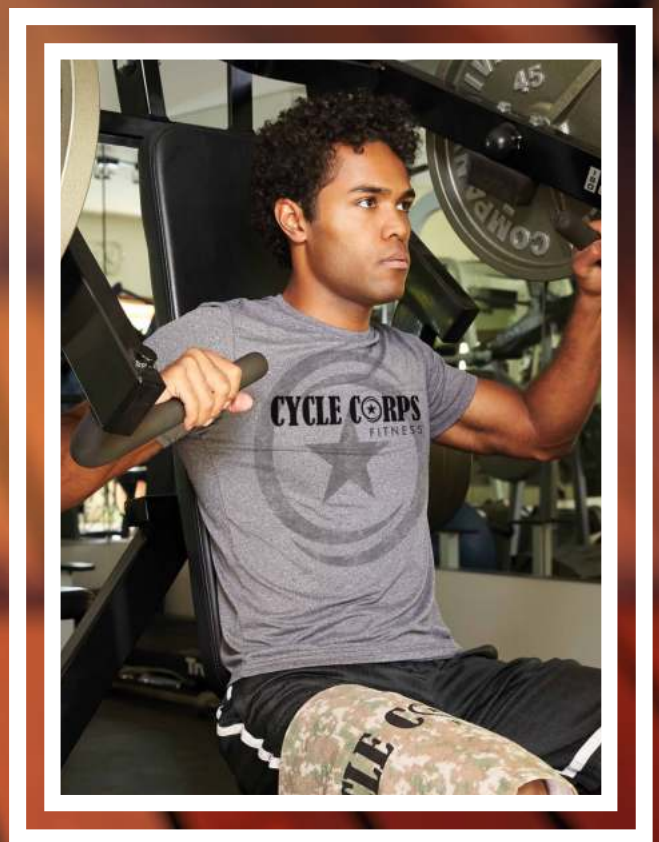
PLEASE CONTACT US FOR A CUSTOM QUOTE.

PERFORMANCE FABRICS

Garments made from synthetic fabrics have become increasingly popular. Clothing that used to be only for yoga classes, cycling and other sports is now highly fashionable. Printing on these “performance fabrics” (100% polyester, polyester/Lycra blends, moisture wicking and other advanced synthetic materials) requires expertise.

Three factors must be considered when printing on these specially engineered fabrics – stretch, heat and bleed (dye migration).

Superior’s expertise ensures that your customer’s logo “performs” beyond their expectations.



Performance fabrics are antimicrobial, durable, lightweight, moisture-wicking, mold-resistant, stain-resistant, thermoregulating, breathable, and stretchable.

METALLIC INKS

Add some “bling” to your customer’s printed apparel... Metallic Inks are the best way to bring sparkle into any design.

Metallic inks are another option for you to achieve “shine” in your design. The most durable, it is the best choice for athletic or school items that need to be robust for constant wear. When light is reflected off the ink, it will cause it to shine. Available in a variety of colors (although silver and gold are standard), metallic inks work best when there are no small details to fill as the ink is a bit thicker than normal.

AVAILABLE IN TWO COLORS



GOLD



SILVER



Not every customer wants the same old decoration in the same old location. Superior's expertise in retail trends, such as mixed media techniques, can create a fashion forward program that includes a variety of products.

MORE THAN T-SHIRTS

DUFFLE BAGS · APRONS · SWEATPANTS · BOOKBAGS
BASEBALL CAPS · BEANIES · POLOS · AND MORE



BRING YOUR GROUP TOGETHER

Custom clothing has the power to create lasting memories, start new traditions, or unite groups for a common purpose. Superior will take care of the decorating so your customer can show off their unique shirts!

ART REQUIREMENTS

Artwork is accepted via e-mail by submitting directly to your customer service representative.

Identify your company name and P.O. number in all e-mails.

FILE SPECIFICATIONS

- Adobe Illustrator CC 2015 or earlier
- Adobe Photoshop CC 2015 or earlier
- All fonts must be converted to outlines.
- Include all EPS, PSD, TIFF files (300 dpi) actual imprint size.
- Include all spot colors in artwork or indicate on color key.

SIMULATED 4-CP SPECIFICATIONS

- All 4-Color Process art requires color correction.
- Charges start at \$320.00(C).
- Match print (color key) MUST be provided by customer.
- Artwork must be sent on disc or e-mailed to rep.

EMBROIDERY SPECIFICATIONS

- All embroidery files must be in Tajima format.
- Files must be sent directly to your customer service rep.
- Factory is not responsible for any problems that occur from customer supplied digitizing.
- Additional art costs may apply, contact customer service rep.

FREE INBOUND FREIGHT OFFER

Every order that ships directly to our facilities will receive Free Inbound Freight from one of the suppliers below for weekday delivery!



UNIQUE DECORATING LOCATIONS



Bleed Off of the Bottom



Down the Left Side



Down the Right Side



Yoke



Bottom Hem on the Left Side



Bottom Hem on the Right Side



Left Hip



Right Hip



Upper Left Shoulder

SUPERIOR OFFERS SO MUCH MORE. ASK ABOUT OUR FULFILLMENT PROGRAMS AND CUSTOM **PACKAGING OPTIONS.**

We offer poly bagging, folding, hang tags, labeling from children apparel and so much more!

PLACING AN ORDER

- SUPERIOR DECORATING will not process your order unless ALL of the following information below is provided.
- Each order must be submitted on one PO to orders@superiordecorating.com, send art with the PO.
- PO # (and/or order name)
- In hands date/ship date
- Ship to address with a third party billing account, OR we will ship via ground on our account and bill published rates.
- Tracking for incoming blank goods
- Blank information – item number*, color, size and quantity breakdown
- We do not accept “Customer Supplied Goods” as a style code
- Artwork instructions - imprint color (PMS or Pantone), size and location
- Upon art proof approval, production time is 5-7 business days.
- Blanks must be in-house within 72 hours of order processing
- All order revisions will be charged a \$25.00 revision fee.

This includes unapproving proofs that have been approved, adding, or removing garments, changing the ship to address and any other modifications to the original order.

RUSH ORDERS:

- All rush orders must be approved by customer service and the production manager before the order is processed. Rush charges will be quoted based on info provided.

RECEIVING:

- All items must arrive in boxes or bags with your PO number referenced, with provided packing slips.
- We do not physically count orders of 288 pcs or more, we verify that the packing slips and box labels provided by your supplier match the qtys on the PO and we go to production. We advise of qty discrepancies once the order is complete and counted by the boxing team.

SHIPPING:

- Incorrect address is subject to a \$25 charge per package.
- We are not responsible for lost or damaged shipments, transit delays caused by acts of God, or errors with delivery companies. Please contact the carrier directly.
- If 3rd party billing instructions are not provided on each P.O. the order will ship via our FedEx account using published rates. Please place shipping instructions and shipping account on every order, even if it is a reorder.

UNCLAIMED GARMENTS:

- Any merchandise unclaimed over 3 months will be donated to charity without notice.

ARTWORK REQUIREMENTS:

- When submitting an order please submit high-resolution art for best results. Vector artwork (AI, PDF, EPS) PSD @ 300 DPI & PNG @300 DPI.
- It is always best to start with your files to size or larger when designing (11"x 11" at 300dpi), then to work at a lower sizing and resolution (4"x 4" at 72 dpi), and scale them up afterwards.
- Whenever possible please keep your files layered, labeled and as clean as possible. All color separations are done in-house to our specifications.
- DST or EMB files accepted for embroidery outlined fonts
- Pantone colors (if applicable) sized to imprint
- Provide imprint locations

ARTWORK SERVICES:

- Creative design, and basic artwork charges \$40 an hour with a 1 hour minimum.

COLOR MATCHING:

- All PMS matching is free of charge. We match the PMS color provided as closely as possible with stocked in house threads, we do not guarantee an exact match.

ARTWORK PROOFS:

- Complimentary e-proof for all screen print orders will be sent out for approval within 48 hours or order processing.
- We do not send e-proofs for embroidery reorders. We proceed with the design instructions from the previous order.

SCREENPRINTING

- Under base is used only for colored garments unless otherwise specified.
- Tri-blend, pigment-dyed, and polyester fabrics: Due to the nature of the fabric, an additional barrier base screen is required to ensure that the dye does not migrate into other colors. There will be a \$0.15 per pc upcharge to print on these specific types of garments. This does not guarantee that the dye from the garment will not migrate to the printed ink. Sometimes dye migration is not visible until days after printing.
- All PMS matching is free of charge. But we do not guarantee an exact match.
- Bags, sleeves, bandanas, towels, and any other non-standard garments and placements will be subject to an upcharge.
- Specialty Inks – upcharges apply, see pricing guide.

Here is our current offering:

- Metallic (Gold & Silver)
- Glitter (Gold & Silver)
- Reflective
- Glow In the Dark
- Water-based

EMBROIDERY

- Quotes for stitch count are subject to change as the job is processed and may vary greatly. For stitch count estimates, usable artwork must be supplied to quote.
- We are NOT responsible for sewing results on jobs that use customer-supplied garments and/or customer supplied DST/EMB files.
- Sew-out proofs are done on scrap material and may not match the fabric or color on the actual order. Texture and stitching may vary when decorating your actual items.
- We highly discourage embroidery on leather, velvet, mesh or other non- standard fabric types.
- Domestic dropships are \$5.00 per address after the first, and add 3 business days to the production time. If you have international orders please submit commercial invoice, and shipper account, we are not able to ship internationally on our shipper account.
- All orders must be submitted using the downloadable drop ship template (Excel format).
- Dropship qty must match your purchase order qty; for example if you have 500 shirts your drop shipping 450 and we are shipping the remaining units to your address, please include this on your excel sheet so the numbers line up exactly.
- If dropships are shipping on our shipper account, costs for shipping will be billed at published rates.
- Any changes made to the drop ship list after submission will require a \$25.00 change fee and an additional 3 business days to your order to ensure data is transferred before the order is fulfilled.

Superior Decorating price lists– By acknowledging these terms you are accepting all pricing, policies, and procedures within our handbook and published price lists. It is at your discretion to familiarize yourself with the price list.

Production Time – Upon art proof approval, our standard production time is 7 business days. Blanks must be in-house within 72 of order processing. Production time may vary depending on service availability.

Dispute on Quality – Claims must be made within 7 business days of receipt of merchandise.

Cancellations – Order cancellations must be confirmed in writing. Cancellations will not be accepted for orders that have already been produced. For non-produced cancellations, any costs leading up to the production of your order will be invoiced accordingly, including art charges, digitizing, sew-outs, pre-production samples, and other associated charges and fees. Order Revisions – All order revisions will be charged a \$25.00 revision fee. This includes unapproving proofs that have been approved, adding or removing garments, changing the ship to address and any other modifications to the original order.

Unique Locations – Printing over seams, zippers, collars, or other unique locations can lead to ink smears, spots, and pooling, mis-registration, coverage inconsistencies, and printable size issues. Unique locations are subject to garment style & sizes for each individual order. We may be restricted in some cases; art may need to be sized based on the smallest garment or specific style if you are using more than one style in your order.

Printing Tolerance – we have a 1/2" – 1" inch movement tolerance in any direction per imprint.

Neck Label Printing – Neck Label Printing on the inside of the garment will typically show through to the other side. This is especially noticeable when there is high contrast between shirt color and ink color. To minimize these issues, we use a light gray ink color in most cases when printing this location.

Garment Reaction to Heat – Garments may shrink slightly when exposed to heat during the ink curing process. In addition, some brands of garment tags will curl and shrink when exposed to heat. This is a risk inherent in the nature of the materials when exposed to heat that we cannot control or be responsible for. We also cannot be held responsible for any resulting imprint shrinkage due to curing.

Dye Migration Warning – Polyester, nylon, pigment dyed, and dye sublimated: Dye migration occurs when the dye in the fabric of the garment sublimates and turns into a colored gas. The gas attempts to escape the garment but can get stuck in the ink that is applied on the garment. It will slowly permeate through which will discolor the ink slightly or completely depending on the garment itself as well as the print process. Darker-colored garments are more likely to migrate (red, blue, black, etc.) Dye migration can appear hours or weeks after the ink is cured. EG Threads uses Poly block in the inks to lower the chance of dye migration. However, we cannot control dye migration and the customer must accept the risk of dye migration when printing on these types of materials.

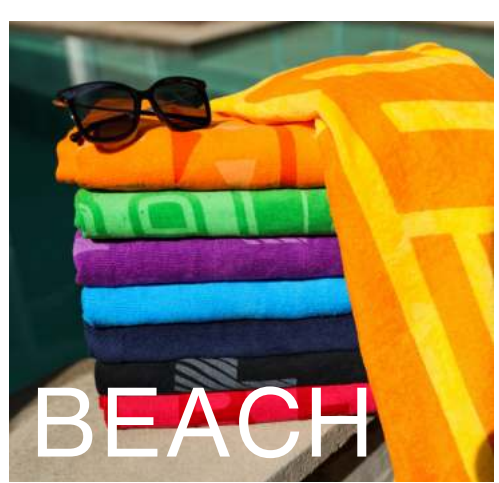
Shipping Charges – We always suggest reaching out to your preferred carrier for shipping rates for best results. Shipping charges are calculated based on the actual weight, box dimensions, distance traveled, declared value and type of shipping service you specify (ground, next day, etc.). We cannot be held to the shipping charges estimated. Estimates are given per day based on fuel costs. Complete packing and shipping instructions must be finalized at the time of placing your order to ensure on time delivery of your order. If 3rd party billing instructions are not provided on the P.O. the order will ship via our account using published rates. Please place shipping instructions and shipping account on every order, even if it is a reorder. All freight is F.O.B. point of origin. You remain responsible for all shipping and handling charges including, without limitation, failure by the consignee to pay shipping charges, failure by any third party to pay shipping charges, or an incorrect or invalid shipping account number. We accept American Express, Visa, and MasterCard (please ask your sales representative for details).

Spoilage: Although our normal spoilage is insignificant, we do allow for: 1.5% per decoration location. We will credit accounts for any spoilage over the 1.5% allowance. Information: The Terms & Conditions are posted on our website



TOWELS BLANKETS CONTRACT DECORATING ALL IN HOUSE APPAREL DECORATING





BEACH

RALLY

FITNESS

GOLF

BLANKETS

SUPERIOR
CORPORATION

superior
THE ART OF DECORATING



pro towels