

# FRESH IDEAS

## FOR BRIGHTER DAYS



SWEET SUMMER



CHEERS TO THAT



SUN & SHADE



GIFT & GROW



PATIO SIPS



STEP OUTSIDE

# TABLE OF CONTENTS



## GIFT & GROW

PAGES 4-13



## OUTDOOR FUN

PAGES 14-19



## SUN & SHADE

PAGES 20-29



## DRINK & CHILL

PAGES 30-41



## ON THE GO

PAGES 42-49



## PAWS & PLAY

PAGES 50-55

# TOGETHER GROWING A GREENER FUTURE

We're proud to support global reforestation efforts through our partnership with One Tree Planted.

For every blossom kit order, a tree is planted. This helps restore forests, rebuild wildlife habitats, and support vital environmental projects worldwide.

By choosing these blossom kits, you're giving a gift that keeps growing. Let's make a lasting impact, one tree at a time.

One Tree Planted is a 501(c)(3) nonprofit dedicated to restoring nature and biodiversity. Their initiatives include rebuilding monarch butterfly habitats, conserving the Congo Basin rainforest, and aiding wildfire recovery in Canada. They also raise awareness about the importance of trees and provide businesses with a simple way to contribute to environmental conservation.



For more information visit [OneTreePlanted.org](https://OneTreePlanted.org)

## ICON LEGEND

Use this legend to understand the icons shown throughout this brochure



### FRESH IDEAS

Brand-new items designed to bring fresh energy to your promotions. From clever novelties to smart branding solutions.



### COLORFY

Our full-color digital print process delivers bold, vibrant artwork. Production times may vary during peak season.



### ONE TREE PLANTED

Each order helps plant a tree through our partnership with One Tree Planted. Every purchase supports global reforestation.



### USA MADE

Items made in the U.S. and decorated by American union workers. The union bug can be added upon request.



### SILKSCREEN

Products that support silkscreen decoration for bold, durable graphics. Ideal for larger imprint areas and curved surfaces.



### ENGRAVED

Items that can be laser engraved for a clean, lasting finish. A great choice for premium gifts or executive giveaways.



### FDA COMPLIANT

Products that meet FDA requirements for food-contact materials. Contact us for compliance details.



Each set includes a stone planter with a drip tray, a seed packet, and two coconut coir pellets- everything needed to start a small indoor garden effortlessly

The planter is crafted from cement, formed by limestone and clay, offering a durable and natural look that complements any decor

Features a drainage hole and matching drip tray to prevent overwatering, ensuring a healthy growing environment for your plants



**Stone Blossom Kit**  
#5663

**Includes:** 1 Seed Packet (Specify on Order), 2 Coconut Coir Pellets, and 1 Stone Planter  
**Colors:** Gray  
**Imprint Area:** 2 3/8" x 2 3/8"  
**Maximum Imprint Colors:** 2  
**Item Size:** 3 1/8" x 3 1/8" x 3 1/8"  
**Packaging:** Individually Boxed



Crafted from acacia wood and cultured marble, this elegant planter brings a touch of nature and sophistication to any indoor space

Each set includes everything needed to start an indoor garden- an acacia wood & marble planter, RPET liner, seed packet, and two coconut coir pellets, making it easy for anyone to enjoy growing their own plants

Colorful full-color decoration and laser engraving options are available, perfect for adding a branded touch that will stand out



**Acacia Wood & Marble Blossom Kit**  
#5665

**Includes:** 1 Seed Packet (Specify on Order), 2 Coconut Coir Pellets, and 1 Acacia Wood & Marble Planter  
**Colors:** Marble & Acacia Wood  
**Imprint Area:** Specify on Order  
Acacia Wood: 2 1/2" x 1 1/2"  
Marble: 2 1/2" x 1/2"  
**Maximum Imprint Colors:** 2  
**Item Size:** 3 1/2" x 3 1/2" x 3 1/2"  
**Packaging:** Individually Boxed



Designed with a nod to modern minimalism, this planter set provides any room or workspace with an additional touch of style

The two-piece wooden bamboo stand fits firmly together, allowing the ceramic plater to rest snugly on top

This set showcases a neutral and versatile design which complements nearly all decor aesthetics

**Ceramic Planter Set**  
#5662

**Includes:** 1 Seed Packet (Specify on Order), 3 Coconut Coir Pellets, and 1 Ceramic Planter Set

**Colors:** White Planter and Bamboo Legs

**Imprint Area:** 1 3/8" x 1 3/4"

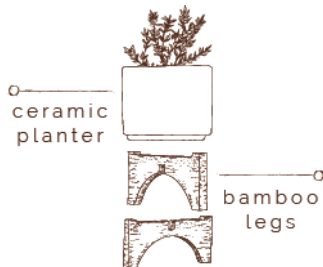
**Maximum Imprint Colors:** 2

**Item Size:**

Planter: 3 3/4" Dia. x 3"

Legs: 4 1/8" x 4 1/8" x 1 7/8"

**Packaging:** Individually Boxed



This simple passive hydroponic system provides the perfect amount of water to your plant, ensuring you never over-water or under-water

To keep the plant properly hydrated, simply pour water into the glass reservoir whenever the water levels become low

Makes a perfect addition to the desk or shelves of both green and brown thumbs alike!

**Self Watering Planter**  
#5664

**Includes:** 1 Seed Packet (Specify on Order), 2 Coconut Coir Pellets, and 1 Self Watering Planter Set

**Colors:** White

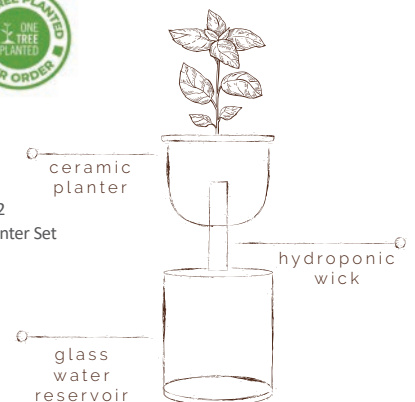
**Imprint Area:** 1 3/8" x 1 3/4"

**Imprint Location:** Glass Water Reservoir

**Maximum Imprint Colors:** 2

**Item Size:** 3 5/8" Dia. x 4 1/4"

**Packaging:** Individually Boxed





### Mini Bamboo Blossom Kit

#5659

**Includes:** 1 Seed Packet (Specify on Order), 2 Coconut Coir Pellets, 1 Bamboo Pot, and 4CP Packaging w/Imprint on Top

**Colors:** Terra Cotta - Color May Vary

**Imprint Area:** 1 3/8" x 1 1/4"

**Maximum Imprint Colors:** 2

**Item Size:** 3 1/16" Dia. x 2 7/8"

**Packaging:** 4CP Packaging



Bamboo blossom kits crafted from moso bamboo composite containing 94% bamboo powder, offering a clean, natural appearance

A full-color wrap provides space for branding and planting instructions while each kit includes everything needed to begin growing

### Bamboo Blossom Kit

#5660

**Includes:** 1 Seed Packet (Specify on Order), 3 Coconut Coir Pellets, 1 Bamboo Pot, and 4CP Packaging w/Imprint on Top

**Colors:** Terra Cotta - Color May Vary

**Imprint Area:** 2 3/8" x 1 3/8"

**Maximum Imprint Colors:** 2

**Item Size:** 3 1/2" x 3 1/2" x 3 1/2"

**Packaging:** 4CP Packaging



Add a touch of modern whimsy to your home or office with these unique and memorable People Planter Kits

Made from glazed finished ceramic and holding a white wood sign, this little character is sure to stand out and leave a lasting impression

Each kit comes packaged in a natural kraft box which includes a people planter, imprinted wood sign, seed packet, coconut coir pellet, and instructions - everything needed to start growing instantly



**People Planter Kit**  
#5661

**Includes:** 1 Seed Packet (Specify on Order), 1 Coconut Coir Pellet, and 1 People Planter  
**Colors:** White

**Imprint Area:** On Sign Only  
1" x 3/4"

**Maximum Imprint Colors:** 2  
**Item Size:**

Planter: 3 5/16" x 4 1/8" x 2 11/16"  
Sign: 1 11/16" x 1 1/4" x 1/8"

**Packaging:** Natural Kraft Box



Bring a hint of the woody outdoors to your home or workspace with these mini campfire mug planters

Each kit comes packaged in a cheerful kraft gift box which contains a mini campfire mug planter, seed packet, coconut coir pellet, and planting instructions

Constructed from durable carbon steel with a speckled powder coating finish- just like the classic full size mug!

**Mini Campfire Mug Blossom Kit**  
#5657

**Includes:** 1 Seed Packet (Specify on Order), 1 Coconut Coir Pellet, 1 Mini Campfire Mug Planter, and Natural Kraft Box w/Instructions  
**Colors:** White, Green, Red, Blue, or Black

**Imprint Area:** 1" x 3/4"  
**Maximum Imprint Colors:** 2

**Item Size:**

Mug: 2 13/16" x 1 7/8" x 2 3/16" Dia.  
Box: 2 15/16" x 2 7/16" x 2 3/16"

**Packaging:** Kraft Packaging





## Mini Watering Can Blossom Kit #5658

**Includes:** 1 Seed Packet (Specify on Order), 1 Coconut Coir Pellet, 1 Metal Watering Can Shaped Planter, and 4CP Packaging w/Imprint on Top  
**Colors:** Silver, White, or Green  
**Imprint Area:** 1 1/4" x 1 5/8"  
**Maximum Imprint Colors:** 2  
**Item Size:** 5 3/8" x 2 7/8" x 2 1/8"  
**Packaging:** 4CP Packaging



Mini blossom kits in classic garden-inspired shapes that add a recognizable touch to desks, shelves, or small spaces

Each kit includes a seed packet, coconut coir pellet, and planting instructions so planting can begin right away

## Mini Pail Blossom Kit

#557

**Includes:** 1 Seed Packet (Specify on Order), 1 Coconut Coir Pellet, 1 Metal Pail Planter, and 4CP Packaging w/Imprint on Top  
**Colors:** Silver, White, or Green  
**Imprint Area:** 1" x 7/8"  
**Maximum Imprint Colors:** 2  
**Item Size:** 2 1/2" x 2 9/16" x 2 1/4"  
**Packaging:** 4CP Packaging



This unique and fresh take on the conventional planter is guaranteed to stand out and leave a memorable impression

Packaged as a complete kit, it contains everything you need to get growing right out of the box

Each kit includes an indoor gardening planter with attached magnets, 2 optional suction cups, a seed packet, 2 coconut coir pellets, and kraft presentation box with planting instructions

### Wall Sprouts Planter Blossom Kit

#5654

**Includes:** 1 Seed Packet (Specify on Order), 2 Coconut Coir Pellets, Indoor Garden Planter, 3 Attached Magnets, 2 Suction Cups, and Natural Kraft Box w/Instructions

**Colors:** Terra Cotta

**Imprint Area:** 1 1/2" x 1 1/2"

**Maximum Imprint Colors:** 2

**Item Size:** 4 1/8" x 3 1/2" x 2 1/2"

**Packaging:** Natural Kraft Box



### Put Your Vertical Spaces To Work!

These versatile Wall Sprout Blossom Kits can be affixed to windows and other smooth surfaces, as well as various magnetic surfaces, such as refrigerators and file cabinets



The removable partitions allow for customizable planting chamber configurations. 1, 2, or 3 sections can be created depending on desired layout.

The handy mini pruning shears are housed in their own integrated pocket. This enables flowers to be pruned and herbs to be snipped right on the spot!

Each kit includes an indoor gardening planter with attached magnets, 2 optional suction cups, mini pruning shears, 3 adjustable chamber partitions, 3 seed packet, 3 coconut coir pellets, and kraft presentation box with planting instructions

### Wall Sprouts Indoor Garden Blossom Kit

#5656

**Includes:** 3 Seed Packets (Specify on Order), 3 Coconut Coir Pellets, 1 Indoor Garden Blossom Kit, Mini Pruning Shears, 3 Attached Magnets, 2 Suction Cups, and Natural Kraft Box w/Instructions

**Colors:** Terra Cotta

**Imprint Area:** 4" x 1 5/8"

**Maximum Imprint Colors:** 2

**Item Size:** 6 1/2" x 2 5/8" x 2"

**Packaging:** Natural Kraft Box





### Wooden Cube Blossom Kit

#5650

**Includes:** 1 Seed Packet (Specify on Order), 2 Coconut Coir Pellets, 1 Wooden Cube Planter w/Plastic Liner, and 4CP Packaging w/Imprint on Top

**Colors:** Natural Pine Wood

**Imprint Area:** 2 3/8" x 2 3/8"

**Maximum Imprint Colors:** 2

**Item Size:** 3" x 3" x 3"

**Packaging:** 4CP Packaging



Crafted from natural pine, these blossom kits highlight the warmth and character of real wood

Each planter includes a protective liner, seed packet, coconut coir pellet, and planting instructions for an easy start to growing

### Wooden Wheel Barrow Blossom Kit

#5652

**Includes:** 1 Seed Packet (Specify on Order), 1 Coconut Coir Pellet, 1 Wood Wheel Barrow Planter w/Plastic Liner, and Natural Kraft Box

**Colors:** Natural Pine Wood

**Imprint Area:** 2 1/2" x 1 3/8"

**Maximum Imprint Colors:** 2

**Item Size:** 7" x 2 1/4" x 3"

**Packaging:** Individually Boxed



The perfect botanic accent for the home or workspace, the Terzetto Blossom Kit adds an undeniable verdant sensibility to just about any indoor space

This scaled-down version of the quintessential window box planter comes with everything required to begin growing your very own indoor garden



**Terzetto Blossom Kit**  
#5653

**Includes:** 3 Seed Packets (Specify on Order), 6 Coconut Coir Pellets, 1 Wood Planter Box, 1 Mini Gardening Tool, 3 Burlap Planter Bags, 3 Wood Plant Markers, and Natural Kraft Box w/Instructions  
**Color:** Natural  
**Imprint Area:** 4" x 2 1/2"  
**Maximum Imprint Colors:** 2  
**Item Size:** 9 1/2" x 3 5/16" x 4 1/2"  
**Packaging:** Natural Kraft Box



**Try a Themed Kit!**

- Salsa:*  
Cilantro, Tomato, Jalapeno
- Herb:*  
Basil, Thyme, Oregano
- Relaxation:*  
Echinacea, Lemon Balm, Lavender
- Pizza:*  
Oregano, Tomato, Thyme
- Flower:*  
Marigold, Poppy, Zinnia
- Cocktail:*  
Mint, Lavender, Basil
- Tea:*  
Mint, Chamomile, Lemon Balm
- And more!*



Each Snap-In Blossom Kit includes a full color process insert, a seed packet of your choice, 3 coconut coir pellets, plastic flower pot, and full color packaging with an imprint on top

### Snap-In Blossom Kit

#566

**Includes:** 1 Seed Packet (Specify on Order), 3 Coconut Coir Pellets, Plastic Flower Pot, One 4 Color Process Insert, and 4CP Packaging w/Imprint on Top

**Colors:** Terra Cotta or White

**4CP Insert Size:** 10" x 3"

**Item Size:** 4 1/2" x 4 1/4"

**Packaging:** 4CP Packaging



Available with your choice one of 4 pen styles: Buttercup, Daisy, Palm Tree, or Sunflower

Each "pot" is made with 100% recycled materials and available in your choice of green, orange or white

### Pen & Mini Pot

#533

w/Recycled Plastic Pot and Flower Pen (Specify on Order)

**Colors:** Recycled Orange, White, or Green Pot

**Imprint Area:** Pot Only  
1" x 3/4"

**Maximum Imprint Colors:** 2

**Item Size:**

Cup: 2" Dia. x 1 3/4"

Pen: Approx. 3" Dia. x 5 3/4"

**Packaging:** Polybagged

Pick Your Pen



Palm Tree



Sunflower



Daisy



Buttercup



## AVAILABLE SEED OPTIONS



**Basil**  
*Italian Large Leaf*



**Cilantro**  
*n/a*



**Chamomile**  
*Common*



**Clover**  
*Dutch White Clover*



**Coleus**  
*Rainbow Mix*



**Echinacea**  
*Purple Coneflower*



**Fir Tree**  
*Douglas*



**Forget-Me-Not**  
*Cynoglossum*



**Jalapeño**  
*n/a*



**Lavender**  
*True English*



**Lemon Balm**  
*Mint*



**Marigold**  
*French Sparky Mix*



**Mint**  
*Peppermint*



**Mixed Herbs**  
*Basil, Dill, Cilantro, Parsley*



**Money Plant**  
*n/a*



**Oregano**  
*Italian*



**Patriotic Mix**  
*Bachelor Button*



**Poppy**  
*Shirley*



**Spruce Tree**  
*Colorado Blue*



**Sunflower**  
*Autumn Beauty*



**Thyme**  
*Winter*



**Tomato**  
*Red Cherry Large*



**Wildflower Mix**  
*Variety\**



**Zinnia**  
*California Giant*



We pledge that we do not knowingly buy or sell genetically engineered seeds or plants. The mechanical transfer of genetic material outside of natural reproductive methods and between genera, families or kingdoms poses great biological risks, as well as economic, political and cultural threats.

\*Rocket Larkspur, Purple Coneflower, Love in a Mist 'Miss Jekyll', Lance Leaved Coreopsis, Shasta Daisy 'Alaska', Pinks Sweet William, Blue Flax, Globe Gilia, Black Eyed Susan, Virginia Stock, Catchfly

Shipping Notice: Contains a small seed packet. Ships within the U.S. and Canada only; some seed types may have import restrictions for Canada. Export documentation is not available for other countries.



Each set is comprised of colorful play accessories designed to promote fun and imagination

Perfect for play dates at the beach, pool, or even the garden!

Recommended for ages 18+ months



**Beach Bucket Set**  
#212

**Colors:** White Bucket w/Green Handle and Assorted Tool Colors

**Imprint Area:** 1 1/2" x 2 1/4"

**Maximum Imprint Colors:** 2

**Item Size:** 5" Dia. x 5 1/2" x 3" Dia.

**Packaging:** Fishnet Bag

This wooden yo-yo is a classic toy made from durable lotus wood featuring a timeless appeal

CPSIA tested and age-graded for 5+, this item isn't just for kids—it's a nostalgic favorite for adults too, providing endless entertainment across generations

A perfect tool for stress relief, enhancing hand-eye coordination, and fine motor skills

Its compact size and classic design make it a thoughtful giveaway for events, promotional campaigns, or retro-themed gifts



**Wooden Yo-Yo**  
#1202

**Colors:** Natural

**Imprint Area:** 1 3/8" Dia.

**Maximum Imprint Colors:** 2

**Item Size:** 2" Dia x 1"

**Packaging:** Individually Boxed



Paddle-and-ball shape offers a playful nod to the sport while keeping branding clear and easy to read

Durable metal construction delivers a solid feel suited for everyday carry

Compact size attaches easily to keys, gym bags, or gear without added bulk

Bottle opener style adds added function for events, tournaments, and post-match gatherings

**Pickleball Bottle Opener Keytag**  
#9041

**Colors:** Silver  
**Imprint Area:** 7/8" x 1/4"  
**Maximum Imprint Colors:** 2  
**Item Size:** 1 5/16" x 3 3/4" x 1/8"  
**Weight:** 250 = 17 lbs.  
**Packaging:** Polybagged

**Pickleball Keytag**  
#9040

**Colors:** Silver w/Yellow Accent  
**Imprint Area:** Specify on Order  
Vertical: 1/2" x 3/4"  
Horizontal: 3/4" x 1/2"  
**Maximum Imprint Colors:** 2  
**Item Size:** 1 7/8" x 3 13/16" x 1/8"  
**Packaging:** Polybagged



The smooth, compact shape fits easily in backpacks, lunch bags, and most car cup holders

A secure, twist-on lid with an easy-sip spout helps minimize spills and makes hydration simple wherever they go

Designed for kids ages 5 and up, this smaller take on a classic stainless design keeps drinks cold for up to 15 hours and built for everyday adventures at home, school, or on the go

Double-wall construction helps maintain temperature while keeping little hands dry and comfortable

**14oz Lil' Sipper Hydration Bottle**  
#414

**Colors:** Black, Blue, Red, or White  
**Imprint Area:** 1 3/4" x 3"  
**Maximum Imprint Colors:** 2  
**Item Size:** 3 3/4" x 7 1/8" x 2 7/8" Dia.  
**Packaging:** Individually Boxed





## Striped Adult Flip Flops

#215

Colors: Red, Pink, Yellow, Blue, or Black w/White Stripes

Imprint Area: 3" x 3/8" (Outside Strap of Each)

Maximum Imprint Colors: 1

Item Sizes (Approximate):

S-Ladies 6-7, M-Ladies 8-10,

L-Mens 8-9, XL-Mens 10-12

Packaging: Each pair is banded together in a color-coordinated mesh drawstring bag



## Adult Flip Flops

#15

Colors: Pink, Orange, Red, Purple, Black, Green, Blue, or Yellow/Black

Imprint Area: 3" x 3/8" (Outside Strap of Each)

Maximum Imprint Colors: 1

Item Sizes (Approximate):

S-Ladies 6-7, M-Ladies 8-10,

L-Mens 8-9, XL-Mens 10-12

Packaging: Each pair is banded together in a color-coordinated mesh drawstring bag



Mix & match sizes and colors  
Triple layer design enhances durability



## Slide Flip Flops

#219

Colors: Black or Blue

Imprint Area: 2" x 1" (Outside Strap of Each)

Maximum Imprint Colors: 1

Item Size: (Approximate)

S-Ladies 6-7, M-Ladies 8-10,

L-Mens 8-9, XL-Mens 10-12

Packaging: Each pair is banded together in a color-coordinated mesh drawstring bag



Convenient slide flip flop design with adjustable hook and loop top closure



Thick white straps allow for a generous decoration area and attached to the sole with a comfortable woven fabric band

## Deluxe Flip Flops

#217

Colors: Red, Pink, Orange, Yellow, Blue, Purple, or Black

Imprint Area: 3" x 11/16" (Outside Strap of Each)

Maximum Imprint Colors: 1

Item Size: (Approximate)

S-Ladies 6-7, M-Ladies 8-10,

L-Mens 8-9, XL-Mens 10-12

Packaging: Each pair is banded together in a color-coordinated mesh drawstring bag



Each pair of flip flops comes in a color-coordinated mesh drawstring bag



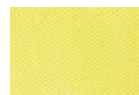
Orange



Blue



Purple



Yellow



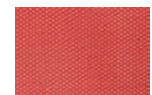
Black



Pink



Green



Red



Once dropped into the water, sensors are triggered lighting up the bright keytag, making locating keys in murky, dark waters a breeze

Prevents keys from sinking if dropped in water

Includes a durable 1" split keyring that's perfect for any boat or house keys

**Light Up  
Floating Lifesaver Keytag**

#108

**Colors:** White w/Red Accents

**Imprint Area:** 3/4" x 5/16"

**Maximum Imprint Colors:** 2

**Item Size:** 2 9/16" Dia. x 3/4"

**Packaging:** Polybagged

Floating lifesaver keyring prevents keys from sinking in water

Elastic side accent emulates nylon tow rope

1" split keyring with 1 3/8" metal link chain

**Lifesaver Keytag**

#103

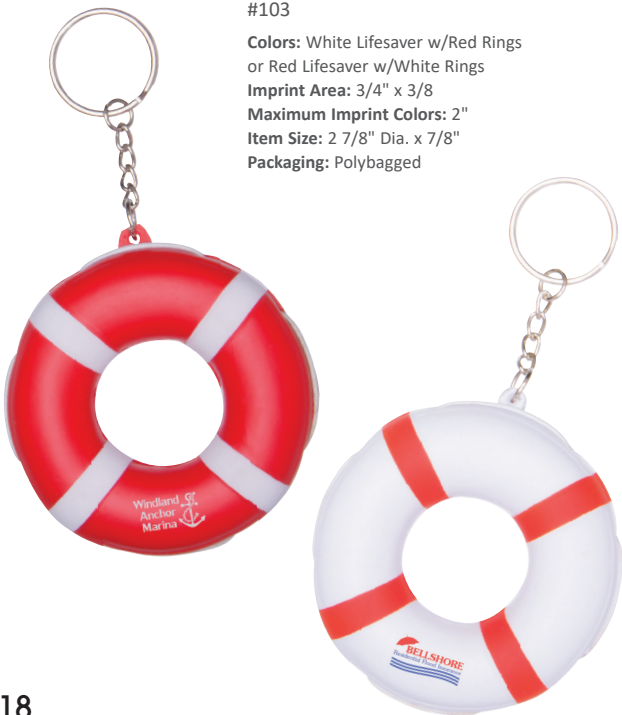
**Colors:** White Lifesaver w/Red Rings or Red Lifesaver w/White Rings

**Imprint Area:** 3/4" x 3/8"

**Maximum Imprint Colors:** 2"

**Item Size:** 2 7/8" Dia. x 7/8"

**Packaging:** Polybagged



**Floating Flip Flop Keytag**  
#104

**Colors:** Red, Blue, Green, Orange, or Yellow  
**Imprint Area:** Specify on Order  
 Vertical: 3/4" x 3/4"  
 Horizontal: 1 5/8" x 1/2"  
**Maximum Imprint Colors:** 1  
**Item Size:** 3" x 1 3/8" x 1/2"  
**Packaging:** Polybagged



**Floating Anchor Keytag**  
#106

**Colors:** Red, Blue, Green, or Orange  
**Imprint Area:** 1 1/4" x 1/2"  
**Maximum Imprint Colors:** 1  
**Item Size:** 2 11/16" x 3" x 1/2"  
**Packaging:** Polybagged



Made from buoyant EVA foam to ensure your keys stay afloat in the water

Bright colors make locating your keys fast and easy

Perfect for water related promotions such as marinas, lake front businesses, aquariums, etc

# DOUBLE BRAND EXPOSURE

WITH IMPRINTS ON BOTH ARMS



LOOK FOR THESE  
IMPRINT VARIATION ICONS →



Partial - Both Arms



Full - Both Arms



Partial - Both Arms



Partial & Full - 1 Partial, 1 Full Arm



Partial - Both Arms



\$40(G) set-up for  
1 color imprint on both arms

## Polarized Sunglasses

#8885

Colors: Black or Tortoiseshell

Imprint Area: Specify on Order

Partial Arm: 3" x 5/16"

Full Arm: 5 1/2" x 3/8"

Maximum Imprint Colors: 2

Item Size: 5 13/16" x 5 3/4" x 1 7/8"

Packaging: Polybagged



Full Arm Imprint Shown



Partial Arm Imprint Shown

Polarized lenses help reduce glare from reflective surfaces like water, pavement, and car windows, improving clarity and visual comfort in bright outdoor conditions





### Wood Grain Design Sunglasses

#8877

Colors: Tan

Imprint Area: Specify on Order

Partial Arm: 3" x 5/16"

Full Arm: 5 1/2" x 3/8"

Item Size: 5 5/8" x 5 3/4" x 1 7/8"

Maximum Imprint Colors: 2

Packaging: Polybagged



Partial Arm Imprint

Full Arm Imprint

Classic style sunglasses feature a wood grain textured print



### Wooden Bamboo Sunglasses

#8869

Colors: Blue, Red, Green, or Black Face w/Natural Bamboo Wood Arms

Imprint Area: 1 1/2" x 5/16"

Maximum Imprint Colors: 2

Item Size: 5 3/4" x 2" x 6"

Packaging: Polybagged



Partial Arm Imprint

Hand-crafted arms from 100% renewable bamboo wood with durable metal hinges

Soft feel finish on the front adds to the overall stylish look



### Children's Sunglasses

#8880

Colors: Blue, Green, White, or Black

Imprint Area: Specify on Order

Partial Arm: 2" x 1/4"

Full Arm: 4 5/8" x 5/8"

Maximum Imprint Colors: 2

Item Size: 5" x 5 1/8" x 1 5/8"

Packaging: Polybagged



Smaller sized frames designed to fit children 4-10 years old    Conforms to CPSC, CPSIA, and FDA standards

### Promo Sunglasses

#8863

Colors: Red, Black, Blue, White, Green, Pink, Purple, or Orange

Imprint Area: 2 1/4" x 5/16"

Maximum Imprint Colors: 1

Item Size: 5 3/4" x 5 1/4" x 1 7/8"

Packaging: Polybagged

WARNING: Cancer and Reproductive Harm - [www.P65Warnings.ca.gov](http://www.P65Warnings.ca.gov)



## Patriotic Sunglasses

#8881

**Colors:** Red, White, and Blue Face and White Arms w/Silver Lenses

**Imprint Area:** Specify on Order

Partial Arm: 3" x 5/16"

Full Arm: 5 1/2" x 3/8"

**Maximum Imprint Colors:** 2

**Item Size:** 5 3/4" x 5 3/4" x 1 15/16"

**Packaging:** Polybagged



## Color Arm Sunglasses

#8873

**Colors:** Clear w/Blue, Red, White, Green, Orange, or Yellow Arms

**Imprint Area:** Specify on Order

Partial Arm: 3" x 5/16"

Full Arm: 5 1/2" x 3/8"

**Maximum Imprint Colors:** 2

**Item Size:** 6" x 6" x 1 3/4"

**Packaging:** Polybagged

**WARNING:** Cancer and Reproductive Harm - [www.P65Warnings.ca.gov](http://www.P65Warnings.ca.gov)

Clear classic frames with colored arms provide an updated and stylish presentation





**Sunglasses**

#8862

**Colors:** White, Black, Red, Blue, Pink, Purple, or Green  
**Imprint Area:** Specify on Order  
 Partial Arm: 3" x 5/16"  
 Full Arm: 5 1/2" x 3/8"  
**Maximum Imprint Colors:** 2  
**Item Size:** 6" x 6" x 1 3/4"  
**Packaging:** Polybagged



**Half Frame Sunglasses**

#8874

**Colors:** Black, Blue, Red, White, or Green  
**Imprint Area:** Specify on Order  
 Partial Arm: 3" x 5/16"  
 Full Arm: 5 1/2" x 3/8"  
**Maximum Imprint Colors:** 2  
**Item Size:** 6" x 6" x 1 3/4"  
**Packaging:** Polybagged



**WARNING:** Cancer and Reproductive Harm - [www.P65Warnings.ca.gov](http://www.P65Warnings.ca.gov)



Full Arm Imprint

Partial Arm Imprint



### Translucent Sunglasses

#8856

Colors: Clear, Trans. Gray, Trans. Blue, Trans. Red, Trans. Green, Trans. Orange, or Trans. Pink

Imprint Area: Specify on Order

Partial Arm: 3" x 5/16"

Full Arm: 5 1/2" x 3/8"

Maximum Imprint Colors: 2

Item Size: 6" x 6" x 1 3/4"


Packaging: Polybagged



Full Arm Imprint



Partial Arm Imprint

 WARNING: Cancer and Reproductive Harm - [www.P65Warnings.ca.gov](http://www.P65Warnings.ca.gov)



Partial Arm Imprint



Full Arm Imprint

### Tie-Dye Sunglasses

#8878

Colors: Blue, Yellow, and Red Tie-Dye

Imprint Area: Specify on Order

Partial Arm: 3" x 5/16"

Full Arm: 5 1/2" x 3/8"

Maximum Imprint Colors: 2

Item Size: 5 3/4" x 5 3/4" x 1 7/8"

Packaging: Polybagged





**PARTIAL  
& FULL**

**Soft Feel Sunglasses**

#8866

**Colors:** Frosted, Black, Red, Blue, Purple, or Green

**Imprint Area:** Specify on Order

Partial Arm: 3" x 5/16"

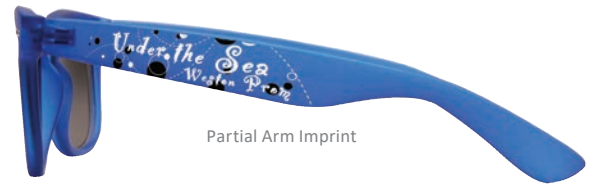
Full Arm: 5 1/2" x 3/8"

**Maximum Imprint Colors:** 2

**Item Size:** 5 1/2" x 6" x 1 3/4"

**Packaging:** Polybagged

Soft feel frames with velvety texture, bold & vibrant frosted colors and graduated tint lenses



Partial Arm Imprint



Full Arm Imprint

**Two-Tone Sunglasses**

#8859

**Colors:** Black/White, Black/Blue, Black/Red, Black/Green, or Black/Orange

**Imprint Area:** Specify on Order

Partial Arm: 3" x 5/16"

Full Arm: 5 1/2" x 3/8"

**Maximum Imprint Colors:** 2

**Item Size:** 6" x 6" x 1 3/4"

**Packaging:** Polybagged

**PARTIAL  
& FULL**

This two-toned color combination is a colorful twist on the classic sunglass style



Full Arm Imprint



Partial Arm Imprint



## Metallic Sunglasses

#8858

Colors: Gold, Silver, Metallic Blue, or Metallic Red

Imprint Area: Specify on Order


Partial Arm: 3" x 5/16"

Full Arm: 5 1/2" x 3/8"

Maximum Imprint Colors: 2

Item Size: 6" x 6" x 1 3/4"

Packaging: Polybagged

 WARNING: Cancer and Reproductive Harm - www.P65Warnings.ca.gov



A shiny and eye-catching version of the timeless sunglasses



Partial Arm Imprint



Full Arm Imprint



## Aviator Sunglasses

#8864

Colors: Silver Frames w/Black Lenses or Gold Frames w/Amber Lenses

Imprint Area: Specify on Order

Upper Right or Left Lens: 3/4" x 1/4"

Lower Right or Left Lens: 3/4" x 1/4"

Maximum Imprint Colors: 1

Item Size: 5 1/2" x 2" x 3/4"

Packaging: Polybagged



High buoyancy accessories ensure your valuables stay afloat

Bright colors allow for high visibility when in the water

**Floating Wrist Strap Key Holder**  
#8810

Colors: Black, Blue, Orange, Yellow, Pink, or Green  
 Imprint Area: 5/8" x 1/4"  
 Maximum Imprint Colors: 1  
 Item Size: 4" x 4" x 5/8"  
 Packaging: Polybagged

**Floating Sunglass Strap**  
#8808

Colors: Black, Blue, Orange, Yellow, Pink, or Green  
 Imprint Area: 1/2" x 1/2"  
 Maximum Imprint Colors: 1  
 Item Size: 13" x 7/8" x 3/8"  
 Packaging: Bulk

8810

8808



Lightweight rubber grips securely fit on the arms of eyewear for maximum retention

Adjustable slider provides secure fit during outdoor activities

**Adjustable Sunglass Strap**  
#8805

Colors: Black, Purple, Green, Light Green, Blue, Red, Orange, Yellow, w/Black Rubber Grips and Slider  
 Imprint Area: 5/8" x 5/16"  
 Maximum Imprint Colors: 1  
 Item Size:  
 Cord: 11" x 1/4" Dia.  
 Slider: 3/4" x 3/8" x 5/16"  
 Packaging: Bulk



Designed to keep your eyewear safe, this folding case features a tri-fold design with magnetic closure and collapses flat for easy storage when not in use, making this a great for travel or every day on the go option

The natural kraft and cork material options showcase your brand's commitment to sustainability



Kraft



Cork



### Folding Eyewear Case

#8809

Colors: Cork or Kraft

Imprint Area: 4" x 1 1/2"

Maximum Imprint Colors: 2

Item Size:

Closed: 6 5/16" x 2 1/2" x 1/2"

Open: 6 5/16" x 2 1/2" x 2 9/16"

Packaging: Polybagged



### Eyewear Protective Case

#8807

w/Metal Carabiner Clip and Zipper Closure

Colors: Black

Imprint Area: 3 1/2" x 1 1/2"

Maximum Imprint Colors: 1

Item Size: 6 1/4" x 2 5/8" x 2 1/8"

Packaging: Polybagged



### Classic Paddle Bottle Opener

#838

Colors: Silver  
 Imprint Area: 3 1/4" x 1 1/8"  
 Maximum Imprint Colors: 2  
 Item Size: 7" x 1 5/8" x 1/8"  
 Packaging: Polybagged

### Color Wrapped Classic Paddle Bottle Opener

#849

Colors: Silver w/Red, Blue, Orange, Green, Purple, or Black Vinyl Grip  
 Imprint Area: 3 1/4" x 1 1/8"  
 Maximum Imprint Colors: 2  
 Item Size: 7" x 1 5/8" x 1/8"  
 Packaging: Polybagged



Durable and light weight beechwood with anti-corrosive #420 stainless steel

Opens bottles with speed & ease

### Wood Paddle Bottle Opener

#852

Colors: Natural Beechwood  
 Imprint Area: 3 1/4" x 1"  
 Maximum Imprint Colors: 2  
 Item Size: 7" x 1 1/2" x 3/8"  
 Packaging: Polybagged



Includes a 6" long 2.45mm ball chain

Smooth brushed metal finish

Simple bottle opener design with an approximate 3/4" x 3/8" center opening



### Dog Tag Bottle Opener Keytag

#856

Colors: Silver  
 Imprint Area: 1 1/16" x 3/4"  
 Maximum Imprint Colors: 2  
 Item Size: 1 3/16" x 2" x 1/16"  
 Packaging: Polybagged





**Bottle Opener Keytag**

#1007

Colors: Silver w/Bamboo Wood

Imprint Area: 1/2" Dia.

Maximum Imprint Colors: 1

Item Size: 1 1/4" x 3 1/4" x 3/8"

Packaging: Polybagged



**Wood Credit Card  
Bottle Opener**

#1001

Colors: Natural Wood

Imprint Area: 1 1/4" x 1 1/2"

Maximum Imprint Colors: 2

Item Size: 2 1/8" x 3 3/8" x 1/8"

Packaging: Polybagged



Each distinctive bottle opener is made with genuine wood veneer  
To achieve a more natural look, opt for a tone on tone imprint (PMS 4625)  
Metal components comply with FDA standards

Each steel tub is galvanized in order to safeguard from rust

After use wipe clean with damp cloth

#713

### 15 Qt Galvanized Metal Tub

Colors: Red, Blue, White, or Silver

Imprint Area: 5" x 2 1/2"

Maximum Imprint Colors: 1

Item Size: 20" x 11 3/4" x 7 1/4"

Packaging: Polybagged



Holds six 12 oz drink bottles and features a convenient built-in bottle opener on each side

Each tub is constructed with galvanized steel in order to safeguard from rust

Wipe clean with damp cloth after each use



### 5 Qt Galvanized Ice Bucket w/Bottle Opener

#712

Colors: Silver

Imprint Area: 3 1/4" x 2 1/2"

Maximum Imprint Colors: 1

Item Size: 8 3/4" Dia. x 8 3/8" x 6 9/16" Dia.

Packaging: Polybagged



This lightweight 16 oz mug is perfect for camping, tailgating, picnics, and everyday use, making it an ideal companion for all your outdoor and indoor adventures

These classic mugs are crafted from galvanized steel with a speckled carbon powder-coated finish, ensuring durability and a timeless look

FDA and Prop 65 compliant, ensuring your mug meets high safety standards for food and drink use

To maintain the quality and longevity of the mug, it is recommended to hand wash only

### 16 oz Campfire Mug

#714

Colors: White, Green, Red, Blue, or Black

Imprint Area: 1 3/4" x 1 3/4"

Maximum Imprint Colors: 2

Item Size: 5 5/16" x 3 5/8" x 3 5/8" Dia.

Packaging: Polybagged



These distinctively charming 2 oz. mini campfire mug shot glasses are sure to stand out and make an impression

Every shot glass comes packaged in a decorative kraft gift box and is from galvanized steel with a speckled carbon powder-coated finish



HAND WASH ONLY

### Mini Campfire Mug Shot Glass

#6312

Colors: White, Green, Red, Blue, or Black

Imprint Area: 1" x 3/4"

Maximum Imprint Colors: 2

Item Size:

Mug: 2 13/16" x 1 7/8" x 2 3/16" Dia.

Box: 2 15/16" x 2 7/16" x 2 3/16"

Packaging: Kraft Packaging





The Govino wine “glass” boasts an award-winning design that seamlessly combines style and functionality, making it a standout choice for wine enthusiasts

Dishwasher safe single, two packs, and four packs also available



Govino®  
16oz Wine Glass  
#542

**Material:** Food-Safe BPA-Free Polymer  
**Colors:** Clear  
**Imprint Area:** 1 5/8" x 2"  
**Maximum Imprint Colors:** 2  
**Item Size:** 3 1/4" x 4 3/8" x 3"  
**Packaging:** Polybagged



The Govino wine/cocktail “glass” is made from a food-safe, BPA-free polymer, which reflects a wine’s color and projects its aromatics much like crystal

Perfect for your favorite cocktail

Dishwasher safe single, two packs, and four packs also available



Govino® 12oz Wine/Cocktail Glass  
#555

**Material:** Food-Safe BPA-Free Polymer  
**Colors:** Clear  
**Imprint Area:** 1 1/2" x 1 1/2"  
**Maximum Imprint Colors:** 2  
**Item Size:** 3" x 3 11/16" x 3"  
**Packaging:** Polybagged



## Cocktail Multi Tool

#710

Colors: Beechwood Handle w/Stainless Steel

Cocktail Accessories

Imprint Area: 2 1/2" x 1/2"

Maximum Imprint Colors: 2

Item Size:

Tool: 8 3/4" x 1 5/8" x 2"

Box: 9 3/4" x 2 15/16" x 2 5/8"

Packaging: Black Window Box



**MUDDLER** Crush fruit, herbs, spices, etc.

**REAMER** Squeeze juice from your favorite fruits

**CHANNEL KNIFE** Create twists and other garnishes

**JIGGERS** Get a perfect 1 oz or 1/2 oz pour every time

**ZESTER** Capture the tang and aroma of citrus fruits

**KNIFE** Slice and dice ingredients and garnishes

**BOTTLE OPENER** Pop the top off a beer or mixer

**CORKSCREW** Uncork your favorite bottle of wine

**STRAINER** Separate ice from liquid as you pour

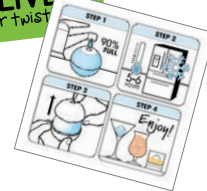
**STIRRER** Blend cocktails thoroughly



With 10 cocktail mixing tools to choose from, this convenient design turns anyone into a master mixologist



Full Color  
Branding  
on Front



Instructions  
on Back



## Ice Sphere Mold

#895

Includes: Branded Instruction Card

Colors: White, Black, Green, or Blue

Imprint Area: 1/2" x 1/2"

Maximum Imprint Colors: 1

Item Size:

Mold: 2 1/8" Dia. x 1 7/8"

Box: 2 3/16" x 2" x 2 3/16"

Instruction Card: 2" x 2"

Packaging: Acetate Box





Each coaster is made from renewable bamboo wood

Features four EVA foam feet to help protect your tables and other surfaces

Available as singles or a set of four with a bamboo wood stand

**Bamboo Coaster**  
#1691

**Includes:** 1 Coaster  
**Colors:** Natural Bamboo Wood  
**Imprint Area:** 2 1/2" x 2 1/2"  
**Maximum Imprint Colors:** 2  
**Item Size:** 3 1/2" x 3 1/2" x 1/4"  
**Packaging:** Natural Kraft Packaging



**Bamboo Coaster Set**  
#1694

**Includes:** 4 Coasters w/Bamboo Holder  
**Colors:** Natural Bamboo Wood  
**Imprint Area:** 2 1/2" x 2 1/2"  
**Maximum Imprint Colors:** 2  
**Item Size:**  
Coaster: 3 1/2" x 3 1/2" x 1/4"  
Bamboo Holder: 4" x 4" x 1 9/16"  
**Packaging:** Natural Kraft Packaging



Made of durable rubber wood with a stainless steel bottle opener on bottom

Grooved edge to help maintain spills and drips

Opt for a tone on tone imprint for a natural look or a full color decoration

Packaged in an open faced natural kraft paper box

**Wood Bottle Opener Coaster**  
#1658

**Colors:** Natural Wood  
**Imprint Area:** 2" x 2"  
**Maximum Imprint Colors:** 2  
**Item Size:** 3 1/2" x 3 1/2" x 1/2"  
**Packaging:** Individually Boxed





Made from high-quality absorbent dolomite stone, this coaster effectively soaks up condensation, keeping your surfaces dry and protected

Coasters available as singles, duos, or sets of four

### Round Absorbent Stone Coaster

#1633

**Includes:** 1 Coaster w/Cork Backing  
**Colors:** Natural Cream  
**Imprint Area:** 2 1/2" x 3"  
**Maximum Imprint Colors:** 1  
**Item Size:** 4 3/8" Dia. x 5/16"  
**Packaging:** Natural Kraft Packaging



### Square Absorbent Stone Coaster

#1634

**Includes:** 1 Coaster w/Cork Backing  
**Colors:** Natural Cream  
**Imprint Area:** 3 3/4" x 2 1/2"  
**Maximum Imprint Colors:** 4  
**Item Size:** 4 1/4" x 4 1/4" x 5/16"  
**Packaging:** Natural Kraft Packaging



Each natural slate coaster includes feet to protect furniture

Due to the item material natural variations may occur from piece to piece

Coasters available as singles or sets of four

### Round Slate Coaster

#1661

**Colors:** Natural Black Slate  
**Imprint Area:** 2 1/2" x 2 1/2"  
**Maximum Imprint Colors:** 1  
**Item Size:** 4" Dia. x 3/16"  
**Packaging:** Onyx Presentation Box



### Square Slate Coaster

#1651

**Colors:** Natural Black Slate  
**Imprint Area:** 2 7/8" x 2 1/2"  
**Maximum Imprint Colors:** 1  
**Item Size:** 4" x 4" x 3/16"  
**Packaging:** Onyx Presentation Box





Each natural Poplar wood coaster is unique in structure, resulting in color and size variations  
 Repeated use creates a weathered patina, adding to its overall warmth and character  
 Packaged in reusable drawstring closure burlap bags made from natural jute

Natural variations may occur from piece to piece



Burlap Drawstring Bag

### Woodlands Coaster

#1671

**Includes:** 1 Woodlands Coaster in a Reusable Burlap Bag

**Colors:** Natural Poplar Wood

**Imprint Area:** 2" x 2"

**Maximum Imprint Colors:** 1

**Item Size:**

Coaster: Approx. 4" Dia. x 7/16"

Burlap Bag: 5 1/4" x 6 5/8"

**Packaging:** Burlap Drawstring Bag

### Woodlands Coaster Duo

#1672

**Includes:** 2 Woodlands Coasters in a Reusable Burlap Bag

**Colors:** Natural Poplar Wood

**Imprint Area:** 2" x 2"

**Maximum Imprint Colors:** 1

**Item Size:**

Coaster: Approx. 4" Dia. x 7/16"

Burlap Bag: 5 1/4" x 6 5/8"

**Packaging:** Burlap Drawstring Bag

### Woodlands Coaster Set

#1674

**Includes:** 4 Woodlands Coasters in a Reusable Burlap Bag

**Colors:** Natural Poplar Wood

**Imprint Area:** 2" x 2"

**Maximum Imprint Colors:** 1

**Item Size:**

Coaster: Approx. 4" Dia. x 7/16"

Burlap Bag: 6 1/4" x 7 3/4"

**Packaging:** Burlap Drawstring Bag

Perfect for outdoor activities as well as use in any casual indoor setting

Constructed from galvanized steel with a speckled carbon powder-coated finish

In order to retain the piece's quality and finish, please hand wash only

### 14 oz Campfire Tumbler

#717

**Material:** Powder Coated Galvanized Steel

**Colors:** Red, Blue, Green, White, or Black

**Imprint Area:**

Pad Print: 2 1/2" x 1/2"

Silkscreen: 3" x 2 1/4"

**Maximum Imprint Colors:** 1

**Item Size:** 3 1/2" Dia. x 5"

**Packaging:** Polybagged



**Acacia Wood & Resin Coaster Set**  
#1684

**Includes:** 4 Coasters w/Metal Holder  
**Colors:** Frosted Resin and Acacia Wood  
**Coasters w/Gold Holder**  
**Imprint Area:** Specify on Order  
 Wood: 2 3/4" x 2"  
 Resin: 2 3/4" x 5/8" (Pad Print Only)  
**Maximum Imprint Colors:** 2  
**Item Size:**  
 Coaster: 3 7/8" x 3 7/8" x 7/16"  
 Metal Holder: 4 5/16" x 4 5/16" x 1 11/16"  
**Packaging:** Natural Kraft Packaging



**Acacia Wood & Resin Coaster**  
#1681

**Includes:** 1 Coaster  
**Colors:** Frosted Resin and Acacia Wood  
**Imprint Area:** Specify on Order  
 Wood: 2 3/4" x 2"  
 Resin: 2 3/4" x 5/8" (Pad Print Only)  
**Maximum Imprint Colors:** 2  
**Item Size:** 3 7/8" x 3 7/8" x 7/16"  
**Packaging:** Natural Kraft Packaging



Crafted with natural acacia wood paired with resin or marble accents, combining durable hardwood with modern mixed-material style. Each coaster showcases unique wood grain and natural variation, giving every piece distinctive character while helping protect surfaces.



**Acacia Wood & Marble Coaster Set**  
#1688

**Includes:** 4 Coasters w/Metal Holder  
**Colors:** Marble & Acacia Wood  
**Imprint Area:** Specify on Order  
 Acacia Wood: 2 3/8" x 1 5/8"  
 Marble: 2 3/8" x 7/16"  
**Maximum Imprint Colors:** 1  
**Item Size:**  
 Coaster: 3 15/16" Dia. x 3/8"  
 Metal Holder: 4 5/16" x 4 5/16" x 1 11/16"  
**Packaging:** Natural Kraft Packaging



**Acacia Wood & Marble Coaster**  
#1686

**Includes:** 1 Coaster  
**Colors:** Marble & Acacia Wood  
**Imprint Area:** Specify on Order  
 Acacia Wood: 2 3/8" x 1 5/8"  
 Marble: 2 3/8" x 7/16"  
**Maximum Imprint Colors:** 1  
**Item Size:** 3 15/16" Dia. x 3/8"  
**Packaging:** Natural Kraft Packaging





This 5-in-1 multi tool includes a spatula, fork, basting brush, corkscrew, and bottle opener

Item details and usage instructions included in box

Made with a beechwood handle and stainless steel tools

Detaches into two parts for ease of use and cleaning

FDA approved for everyday use in the kitchen or patio!

**5-in-1 BBQ Multi Tool**  
#709

**Colors:** Beechwood Handle w/ Stainless Steel BBQ Accessories

**Imprint Area:** 3/4" x 4"

**Maximum Imprint Colors:** 1

**Item Size:**

Tool: 3 7/16" x 10 5/8" x 1"

Box: 5 1/8" x 12 1/4" x 1 1/2"

**Packaging:** Black Window Box



Designed for on-the-go convenience, the case features a sturdy handle, making it easy to carry to picnics, tailgating, camping trips, and backyard gatherings

**3 Piece BBQ Set**

#707

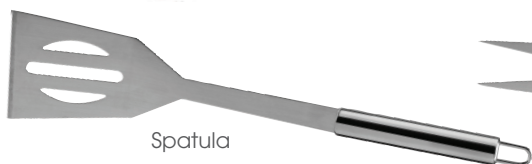
**Colors:** Black w/Silver Accessories

**Imprint Area:** 4" x 1 3/4"

**Maximum Imprint Colors:** 1

**Item Size:** 16" x 4 13/16" x 2"

**Packaging:** Bulk



Spatula



Fork



Tongs

The blade can be easily removed after use, facilitating seamless cleanup and adding convenience without hassle

Every unit arrives with a protective EVA sleeve designed to secure the blade during transit; this sleeve should be detached and discarded prior to use

### Bamboo Pizza Cutter

#3901

Colors: Bamboo

Imprint Area: 2 1/4" x 1 1/2"

Maximum Imprint Colors: 2

Item Size: 4" x 3 5/16" x 11/16"

Packaging: Individually Boxed



### Metal Ice Cream Scoop

#3817

Stainless Steel w/ABA Handle

Colors: White w/Black Trim

Imprint Area: 2 1/8" x 1/2"

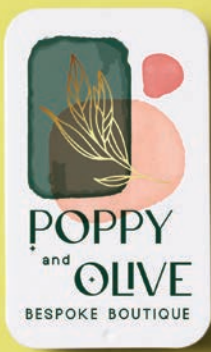
Maximum Imprint Colors: 2

Item Size: 7 1/2" x 1 5/8"

Packaging: Individually Boxed



Perfect for scooping ice cream, cookie dough, mashed potatoes, stuffing, and more



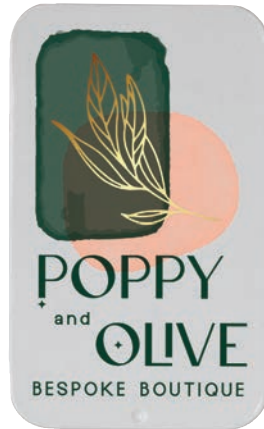
Includes hook and eye closures (5), sewing needles (4), metal snap buttons (5), buttons (12), safety pins (10) thimble, needle threaders (2), folding scissors, and assorted thread colors (7)

A great addition to desk drawers, dorm rooms, glove boxes, purses, overnight bags, and more

The convenient tin carrying case has a secure slide lid and includes a breakdown of the enclosed items on the back

**On The Go Mini Sewing Kit #5002**

**Colors:** Assorted Color Accessories in a Gray and White Tin  
**Imprint Area:** 1 3/4" x 2 1/2"  
**Maximum Imprint Colors:** 2  
**Item Size:** 2 3/8" x 3 15/16" x 3/4"  
**Packaging:** Polybagged



Front



Back



Inside

Each set includes a fork and spoon set with space-saving detachable handles, as well as a collapsible metal straw

The convenient tin carrying case has a secure slide lid and includes a breakdown of the enclosed items on the back

Great for use with packed lunches, picnics, or for general on-the-go activities



Inside

**On The Go Reusable Utensil Kit #5006**

**Colors:** Gray Utensils in a Gray and White Tin  
**Imprint Area:** 1 3/4" x 2 1/2"  
**Maximum Imprint Colors:** 2  
**Item Size:** 2 3/8" x 3 15/16" x 3/4"  
**Packaging:** Polybagged



Back





Front



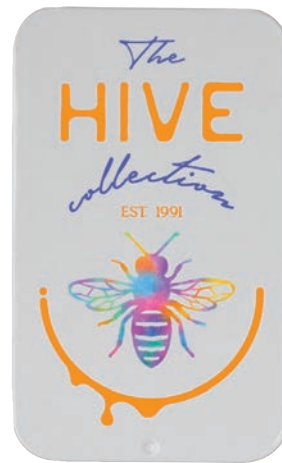
Back

**On The Go Desk Kit #5001**

**Colors:** Assorted Color Accessories in a Gray and White Tin  
**Imprint Area:** 1 1/2" x 2 1/2"  
**Maximum Imprint Colors:** 2  
**Item Size:** 2 3/8" x 3 5/8" x 13/16"  
**Packaging:** Polybagged



Inside



Front



Back

**On The Go Manicure Kit #5000**

**Colors:** Assorted Color Accessories in a Gray and White Tin  
**Imprint Area:** 1 3/4" x 2 1/2"  
**Maximum Imprint Colors:** 2  
**Item Size:** 2 3/8" x 3 15/16" x 3/4"  
**Packaging:** Polybagged

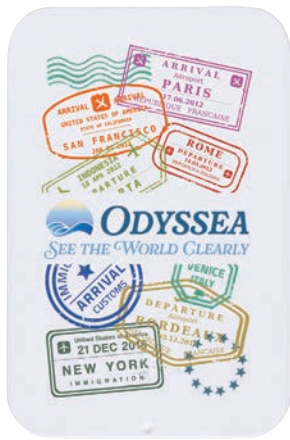


Inside

Keep a set of manicure essentials on hand for touch-ups and maintenance while at home, work, or on the go

Includes a small and large nail clipper, emery board, and metal nail file

The convenient tin carrying case has a secure slide lid and includes a breakdown of included items on the back



Front



Back

**On The Go Eyeglass Repair Kit #5004**

Colors: Assorted Color Accessories in a Gray and White Tin  
 Imprint Area: 1 1/2" x 2 1/2"  
 Maximum Imprint Colors: 2  
 Item Size: 2 3/8" x 3 5/8" x 13/16"  
 Packaging: Polybagged



Inside



Front



Back



Inside

**On The Go Golf Kit #5003**

Colors: Assorted Color Accessories in a Gray and White Tin  
 Imprint Area: 1 1/2" x 2 1/2"  
 Maximum Imprint Colors: 2  
 Item Size: 2 3/8" x 3 5/8" x 13/16"  
 Packaging: Polybagged



Crafted with natural bamboo wood, this multi tool combines functionality with a touch of natural style

It features a flat head screwdriver, Phillips head screwdriver, with 6mm, 5mm, and 3mm hex keys, providing a wide range of tools for bike repairs and other everyday tasks

Compact and lightweight, it's easy to carry in your pocket or toolbox, making it a convenient tool for various activities beyond just bike repair



### Bamboo Bicycle Multi Tool #656

Colors: Bamboo

Imprint Area: 1 1/8" x 7/16"

Maximum Imprint Colors: 2

Item Size: 2 13/16" x 15/16" x 1"

Packaging: Individually Boxed



Features multimode settings including steady on, flashing, and strobe, allowing you to choose the mode that best suits your visibility needs

Includes 2 replaceable CR2032 button cell batteries, providing long-lasting power and easy battery replacement when needed

Great for backpacks, purses, and more, providing versatile use beyond just cycling- attach it to your bag for extra visibility while walking or jogging



### LED Silicone Bike Light #1885

Colors: Blue, Red, Black, or Frost

Imprint Area: 5/8" x 3/4"

Maximum Imprint Colors: 1

Item Size: 1 1/4" x 1 5/8" x 1 5/16"

Packaging: Polybagged



Cream  
Pineapple-Based  
BioBlend™ Material



Blue  
Bamboo-Based  
BioBlend™ Material



Black  
Coffee-Based  
BioBlend™ Material

Adjustable strap attaches securely to luggage, bags, and cases

Designed for use with luggage, briefcases, diaper bags, golf bags, instrument cases, and more



Includes a removable ID card and is sized to easily fit standard business cards

Magnetic closure keeps personal information covered while allowing quick access when needed

### BioBlend™ Material

BioBlend™ is a premium leather alternative made using renewable plant-based materials such as bamboo, pineapple, or coffee.

The BioBlend™ material used in this product is USDA-certified to contain 56–60% biobased carbon content, helping reduce reliance on traditional petroleum-based synthetics while maintaining a refined look and durable performance.

### BioBlend™ Luggage Tag #6227

**Colors:** Black, Blue, or Cream  
**Imprint Area:** Specify on Order  
 Front: 2 1/4" x 2"  
 Back: 3" x 2"  
 Metal Plate: 1/2" x 2 1/4"  
**Maximum Imprint Colors:** 2  
**Item Size:** 4 1/4" x 2 1/2" x 1/4"  
**Packaging:** Individually Boxed



Elevate your style with the polished finished outside and soft, raw suede interior of this keytag, while keeping your keys organized and accessible with the included stainless steel split ring

The strong snap on leather design ensures easy attachment to your belt, purse handle, or backpack, providing convenience on the go

Crafted using authentic leather complemented by sleek gunmetal-finished components

### Leather Snap Keytag

#4420

**Colors:** Tan

**Imprint Area:** Specify on Order

Front: 1/4" x 1 3/4"

Back: 1/4" x 1 3/4"

**Maximum Imprint Colors:** 1

**Item Size:** 1 3/16" x 4 5/8" x 1/2"

**Packaging:** Polybagged



Crafted from authentic Crazy Horse leather, this collection offers the perfect blend of durability and character

Designed to develop a rich patina with every use, each piece tells your unique story through the marks and wear that give it a rugged, one-of-a-kind look

The leather luggage tag features a secure buckle flap closure, keeping your ID information protected while traveling with style and durability



Front



Back

**Leather Luggage Tag**  
#940

Colors: Tan

Imprint Area: Specify on Order

Back: 3" x 2"

Front: 2 1/8" x 1"

Maximum Imprint Colors: 1

Item Size: 4 5/8" x 2 7/8" x 3/16"

Packaging: Polybagged



Travel in style with luggage tags made from natural beech wood

**Wood Luggage Tags**  
#930

Colors: Natural Beechwood w/Brown Leather Strap

Maximum Imprint Colors: 2

Packaging: Polybagged

Includes an adjustable brown strap made from genuine leather

Laser engraved contact template on the backside



**930 Tag**

Imprint Area: 2 5/8" x 1 7/8"

Item Size: 4 1/8" x 2 5/16" x 3/16"



**930 Oval**

Imprint Area: 1 3/4" Dia.

Item Size: 3 7/16" x 2 1/2" x 3/16"

Allows for increased traction and grip while helping to cushion pressure points and absorb shock

Features a zippered carrying case with adjustable handles

**Yoga Fitness Mat & Carrying Case**  
#705

**Material:** PVC Mat and Polyester Case  
**Colors:** Pink, Green, or Blue Mat w/Black Zippered Mesh Carrying Case  
**Imprint Area:** On Case Only  
6 1/2" x 2 1/2"  
**Maximum Imprint Colors:** 1  
**Item Size:**  
Mat: 68" x 24" x 1/8"  
Case: 25 1/2" x 7" x 1/16"  
**Packaging:** Carrying Case



Water Resistant Zipper With Reflective Trim

Secure Side Release Buckle

Adjustable Comfort Stretch Belt



Interior Key Pocket

Main Interior Pocket

Earbud Slot

**Smart Belt Waist Pack**  
#1900

**Colors:** Neon Pink, Neon Orange, Neon Yellow, or Black  
**Imprint Area:** 3 1/2" x 2"  
**Maximum Imprint Colors:** 1  
**Item Size:** 10 1/2" x 4 1/2" x 1/8"  
**Packaging:** Bulk



Made from lightweight and durable Lycra material

Features a water resistant zipper surrounded by reflective trim and an earbud slot for added convenience

The adjustable comfort stretch belt has an approximate span of 26"-60" which fastens securely via a side release buckle

The separate interior key pocket protects your smart phone screen from dings and scratches during activities



**Clear Crossbody Purse**  
#1261

**Colors:** Clear w/Red, Maroon, Green, Black, Orange, Purple, or Blue Trim  
**Imprint Area:** 4 1/2" x 2 1/2"  
**Maximum Imprint Colors:** 1  
**Item Size:**  
 Purse: 9 5/16" x 5 7/8" x 1"  
 Strap: 51" x 3/4" x 1/8"  
**Packaging:** Polybagged

These clear crossbody purses are perfect for football games, stadiums, concerts, as well as high-security businesses and workplaces  
 Made with clear TPU material instead of PVC, offering improved strength, flexibility, and resistance to everyday wear  
 The accommodating shoulder strap easily adjusts from 28" to 58" and can be worn over your shoulder or in a crossbody fashion



**Clear Fanny Pack**  
#1220

**Colors:** Clear w/Black Trim  
**Imprint Area:** 3" x 1 1/2"  
**Maximum Imprint Colors:** 1  
**Item Size:**  
 Fanny Pack: 11 1/2" x 6 1/2" x 3"  
 Strap: 60" x 1" x 1/16"  
**Packaging:** Polybagged

A must have item for stadium events as well as outdoor activities  
 Features a roomy top panel opening as well as an easy access front panel pocket  
 Made with clear TPU material instead of PVC, offering improved strength, flexibility, and resistance to everyday wear  
 Includes durable straps with an adjustable range of 33" to 49" and a secure quick release buckle





This on-theme fire hydrant design adds a touch of flair to your daily walks

The easy refill design features a twist-off bottom to refill bag rolls

The included clip allows you to attach the dispenser to leashes, belt loops, or backpacks, ensuring it's always within reach when needed



Optional Bottom imprint Area

**Fire Hydrant Pet Waste Bag Dispenser**  
#324

w/10 Biodegradable White Waste Bags  
**Colors:** Yellow, Red, White, or Blue  
**Imprint Area:** Specify on Order  
 Side: 3/4" x 1 1/2"  
 Bottom: 1 5/8" Dia.  
**Maximum Imprint Colors:** 2  
**Item Size:** 2 1/2" x 3 1/2" x 2"  
**Packaging:** Bulk

Securely clips onto leash for easy use and accessibility

Includes ten biodegradable white waste bags

Fits standard replacement rolls



**Pet Waste Bag Dispenser**  
#322

w/10 Biodegradable White Waste Bags  
**Colors:** Red, White, or Blue  
**Imprint Area:** 1 3/8" x 3/4"  
**Maximum Imprint Colors:** 2  
**Item Size:** 3 1/4" x 1 3/4" x 1 1/2"  
**Packaging:** Bulk



**Light Up Waste Bag Dispenser**

#338

w/10 Biodegradable White Waste Bags and 3

Replaceable LR1130 Button Cell Batteries

Colors: Pink, Green, Blue, or White

Imprint Area: 1 1/2" x 1"

Maximum Imprint Colors: 2

Item Size: 4 7/8" x 1 5/8" Dia.

Packaging: Polybagged



**Pet Treat Pouch**

#3748

Colors: Blue, Black, or Green

Imprint Area: 2 1/2" x 1 1/4"

Maximum Imprint Colors: 1

Item Size: 5 3/8" x 4 5/16" x 2"

Packaging: Polybagged

The large easy-open magnetic closure allows for single hand grabbing of treats, which makes this perfect for use while training or simply going out for a walk

Includes a belt clip that keeps treats securely attached and within convenient reach

The silicone material design ensures ease of cleaning and sanitizing, even after use with wet treats

The large capacity easily accommodates various sized treats



Crafted with durable jute fabric and natural jute rope, this disc is designed for fun fetch games and light play, making it a go-to toy for active pup

Perfect for classic toss-and-fetch, keeping dogs entertained while encouraging exercise and outdoor play

The mix of fabric and rope textures keeps play interesting and engaging for dogs to chew and chase

**Toss N Chew Dog Disc**  
#109

**Colors:** Khaki w/Tan Rope  
**Imprint Area:** 3 1/4" x 2 1/2"  
**Maximum Imprint Colors:** 1  
**Item Size:** 8 3/4" x 8 1/4" x 3/4"  
**Packaging:** Bulk



**Bone Pull N Tug Dog Toy**  
#129

**Colors:** White Bone w/Red, Blue, or Gray Rope  
**Imprint Area:** 3" x 1 1/4"  
**Maximum Imprint Colors:** 2  
**Item Size:** 15 1/2" x 2 3/8" x 1 3/4"  
**Packaging:** Bulk

The soft and flexible bone-shaped center is made from high-quality TPR material, perfect for withstanding lengthy play by your canine companion

The double looped rope is perfect for tug of war, fetch, or everyday playtime

Designed to be durable and long-lasting, this toy is sure to become a furry fan favorite



This BPA free travel pet water dispenser helps keep your pet hydrated during outings

To use, position the water bottle upright or directly pour the water to fill the bowl

The water bottle holds 500 ml and is interchangeable with most disposable water bottles

**Travel Pet Water Dispenser**  
#3752

**Colors:** Red, Blue, or White  
**Imprint Area:** Specify on Order  
 Side: 3" x 1 1/2"  
 Back: 3" x 1 1/4"  
**Maximum Imprint Colors:** 1  
**Item Size:** 10" x 2 5/8" x 2 1/2"  
**Packaging:** Polybagged



Made from lightweight and durable 300D oxford fabric and features a side release buckle closure and a metal D-ring attachment for leashes

The adjustable collar strap has a 12 1/2" to 20" range allowing for the best fit for your pet

The bright color and reflective strip keeps your pet safe and visible



**Reflective Pet Bandana**  
#1870

**Colors:** Yellow w/Reflective Strip  
**Imprint Area:** Specify on Order  
 1: 5" x 1 1/2"  
 2: 2" Dia.  
**Maximum Imprint Colors:** 1  
**Item Size:**  
 Bandana: 8 1/2" x 5 9/16"  
 Strap: 12 1/2" - 20" x 1 1/8"  
**Packaging:** Bulk





**Dog Bone Reflective Collar Tag**  
#1897

Colors: Blue, Red, or Orange  
 Imprint Area: 1 3/8" x 1/2"  
 Maximum Imprint Colors: 2  
 Item Size: 1 7/8" x 1 1/4" x 1/8"  
 Packaging: Polybagged

A perfect accessory for evening and nighttime walks, light up and reflective collar tags ensure your pet is safe and easily spotted in reduced light conditions

Explore versatility as these tags aren't just for pets- they can be used as keytags, bag tags, or zipper pulls

Chose between reflective collar tags or the battery-operated light-up strobe



**Dog Bone Strobe**  
#3502

Colors: Trans. Red w/Red LED  
 or Trans. Green w/Green LED  
 Imprint Area: 1 1/4" x 1/2"  
 Maximum Imprint Colors: 2  
 Item Size: 1 7/8" x 1 1/8" x 5/8"  
 Packaging: Polybagged



**Paw Shaped Reflective Collar Tag**  
#1898

Colors: Blue, Red, or Orange  
 Imprint Area: 3/4" x 3/8"  
 Maximum Imprint Colors: 2  
 Item Size: 1 7/8" x 1 5/8" x 1/8"  
 Packaging: Polybagged



The collapsible silicone pet bowl is perfect for travel, walks, and trips to the dog park, providing a portable solution for feeding and hydrating your pet on the go

Use the included silver carabiner to attach the bowl to backpacks, leashes, purses, or any other convenient location, ensuring it's always within reach when needed

Made from high-quality silicone material, this pet bowl is BPA-free and FDA compliant, providing a safe and durable option for your furry friend

The bowl's non-porous surface makes it easy to rinse clean, maintaining a hygienic mealtime solution for your pet

### Large Collapsible Silicone Pet Bowl

#3747

**Colors:** Blue, Green, Black, Orange, Classic Blue, Red, Purple, Gray, or White

**Imprint Area:** Specify on Order

One Location Only

Inside: 2 1/2" x 2 1/2"

Bottom: 2 1/2" x 2 1/2"

**Maximum Imprint Colors:** 1

**Item Size:**

Open: 6 7/8" Dia. x 2 7/8"

Closed: 6 7/8" Dia. x 9/16"

**Packaging:** Bulk



### Collapsible Silicone Pet Bowl

#3744

**Colors:** Blue, Green, Black, Orange, Classic Blue, Red, Purple, Gray, or White

**Imprint Area:** Specify on Order

One Location Only

Inside: 2" x 2"

Bottom: 2" x 2"

**Maximum Imprint Colors:** 1

**Item Size:**

Open: 5" Dia. x 2"

Closed: 5" Dia. x 7/16"

**Packaging:** Bulk



Thanks for exploring our  
Fresh Ideas for Brighter Days collection

---

This brochure highlights go-to items and seasonal picks  
that work great for spring promotions, summer events, outdoor  
entertaining, and warm-weather gifting

---

Promos made simple. Branding made memorable.

ASI 62190 • PPAI 111235 • SAGE 50320 • UPIC ILLINI